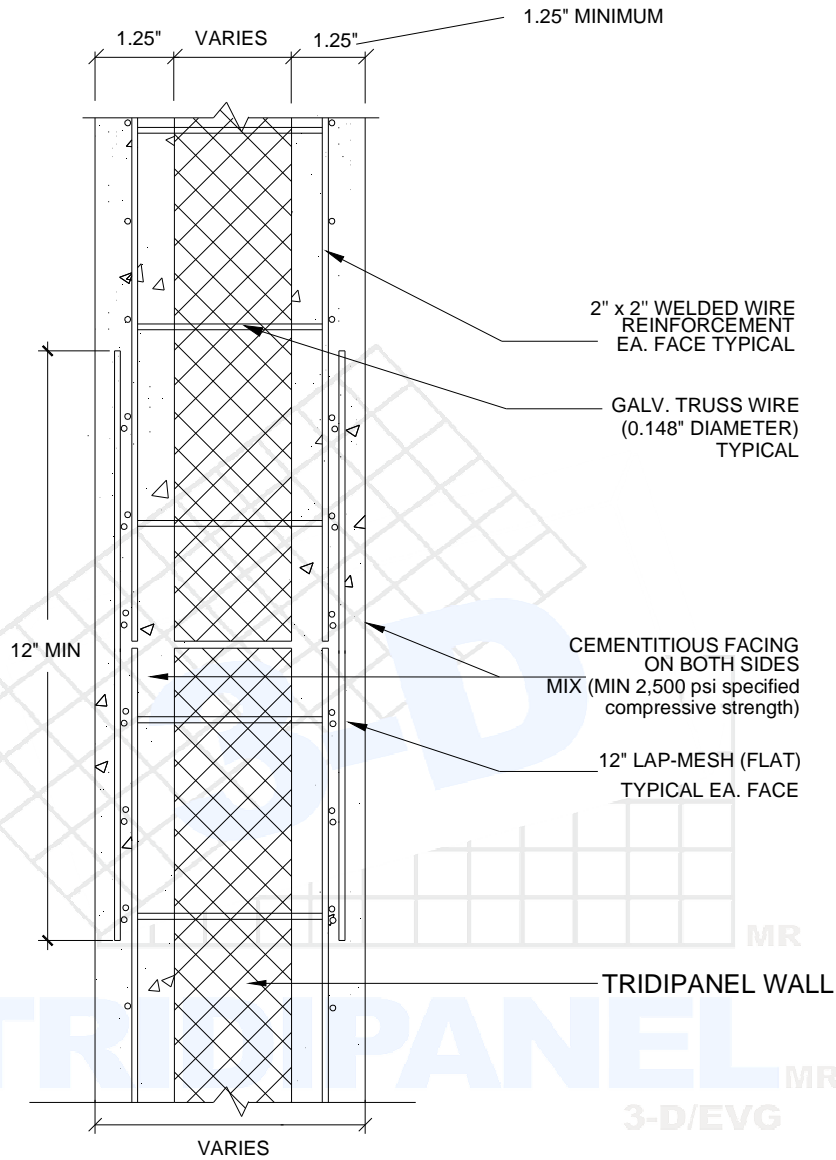
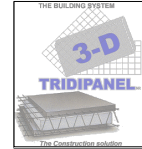


## ISOMETRIC OF TRIDIPANEL

Scale: None

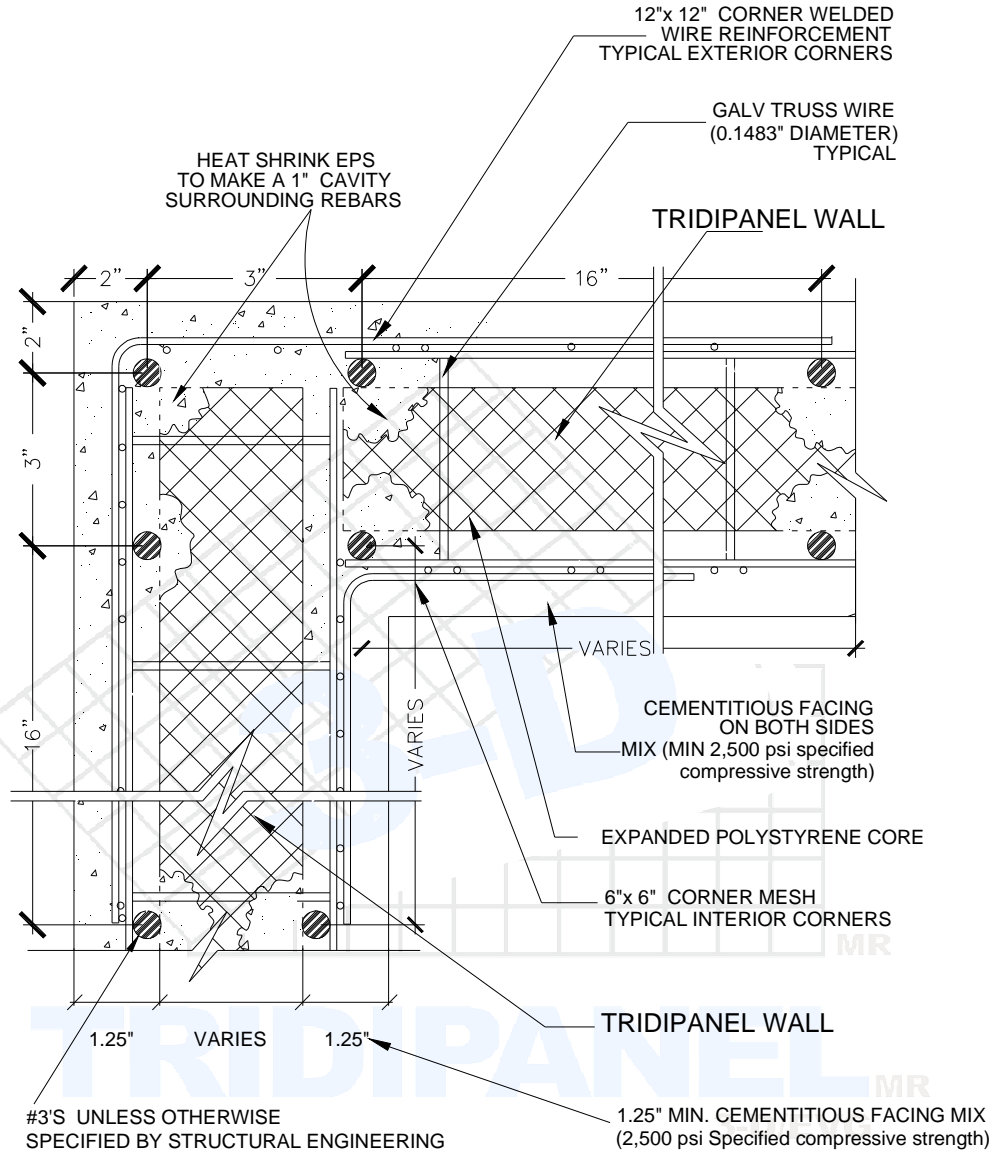
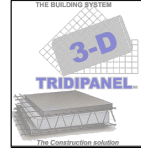
DETAIL
1
February 2013
Revision # 1



## TYPICAL DETAIL OF WALL JOINT

Scale: None

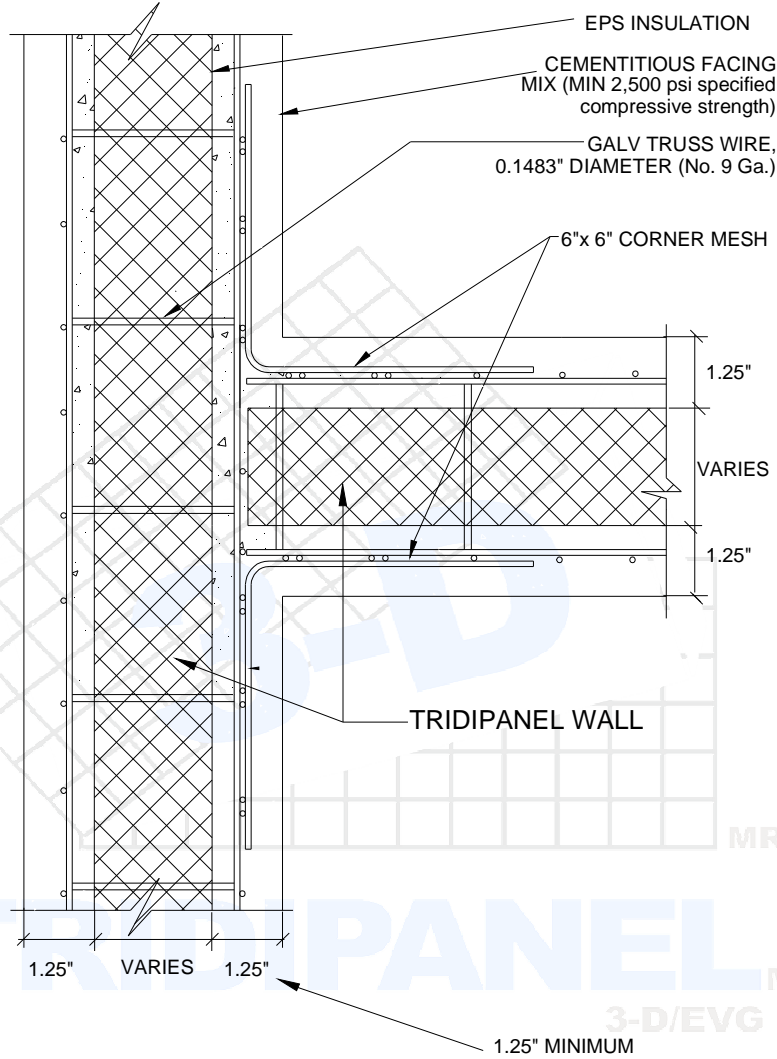
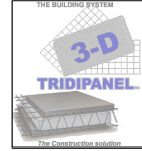
DETAIL
<b>2</b>
February 2013
Revision # 1



## TYPICAL SHEAR WALL CORNER DETAIL

Scale: None

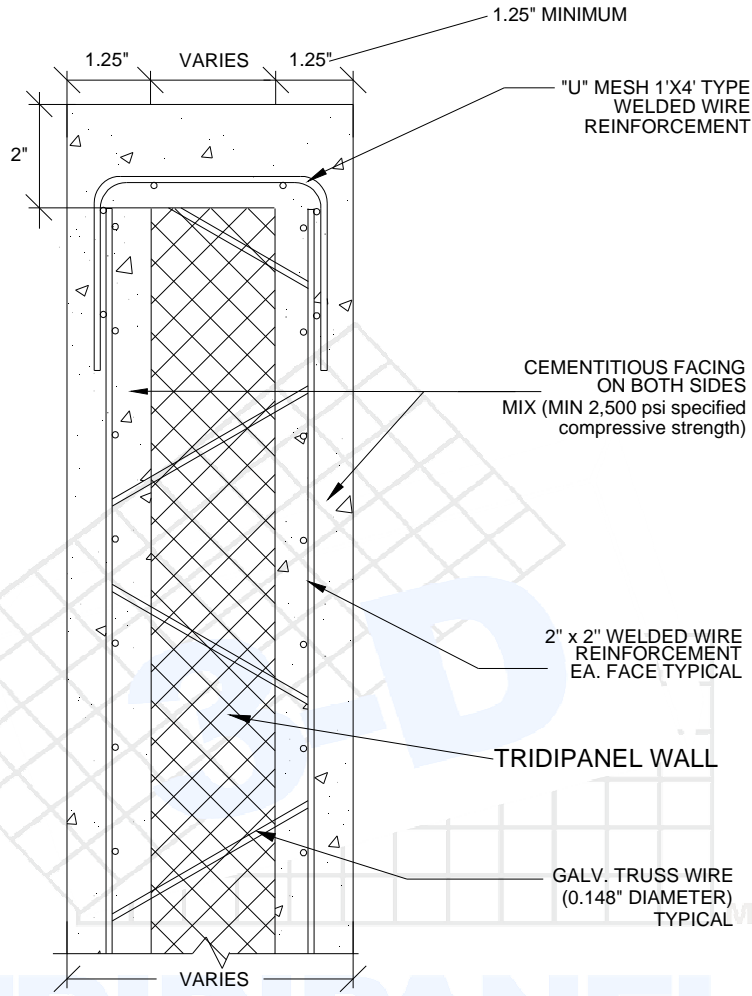
DETAIL
<b>3</b>
February 2013
Revision # 1



### TYPICAL DETAIL OF WALL INTERSECTION

Scale: None

DETAIL
<b>4</b>
February 2013
Revision # 1

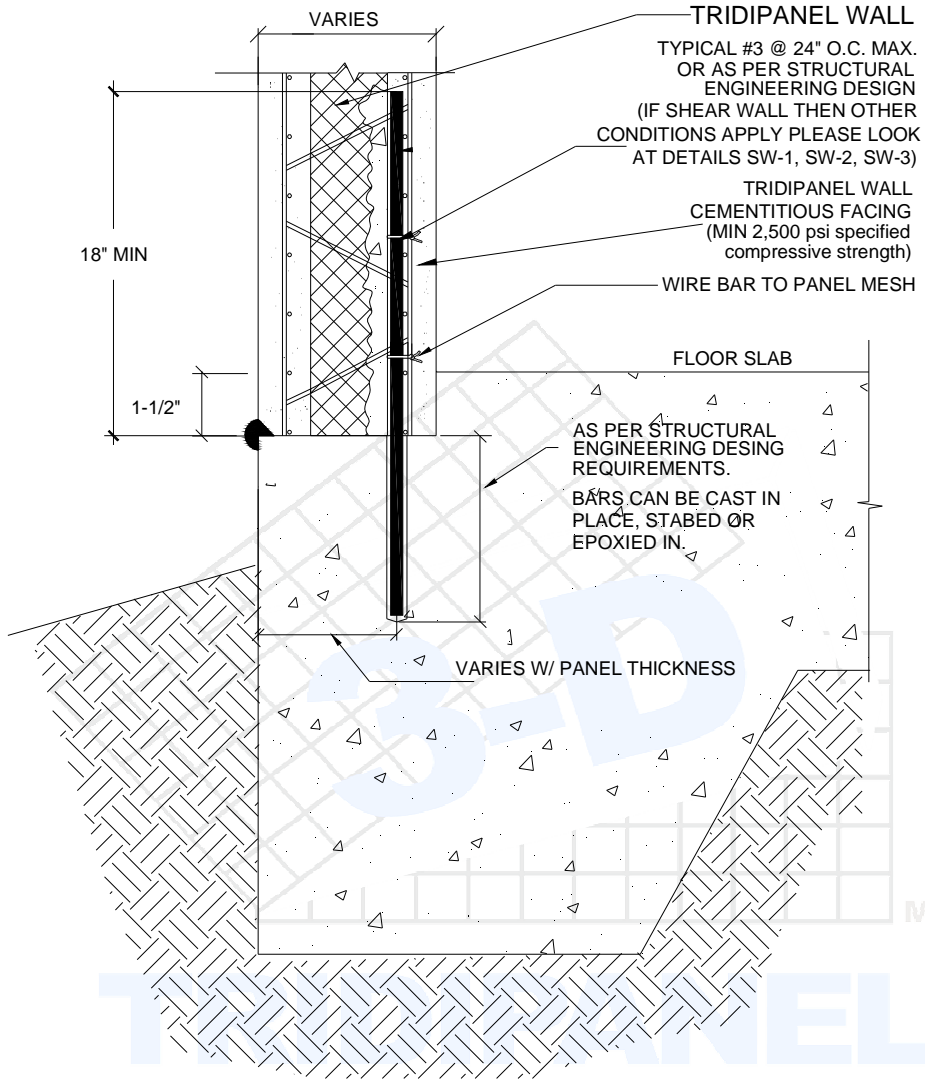


TRIDIPANEL<sup>MR</sup>  
3-D/EVG

**TYPICAL DETAIL OF PARAPET CAP**

Scale: None

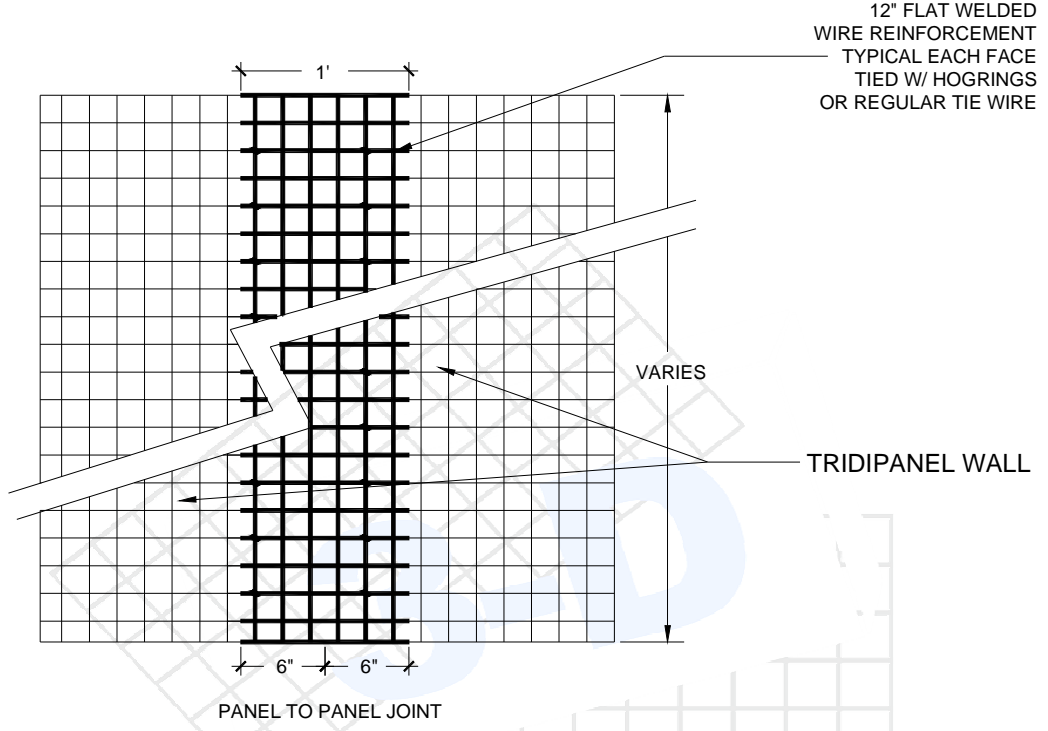
DETAIL
<b>5</b>
February 2013
Revision # 1



**TYPICAL TURN DOWN EDGE  
FOOTING / WALL CONNECTION**

Scale: None

DETAIL
<b>6</b>
February 2013
Revision # 1



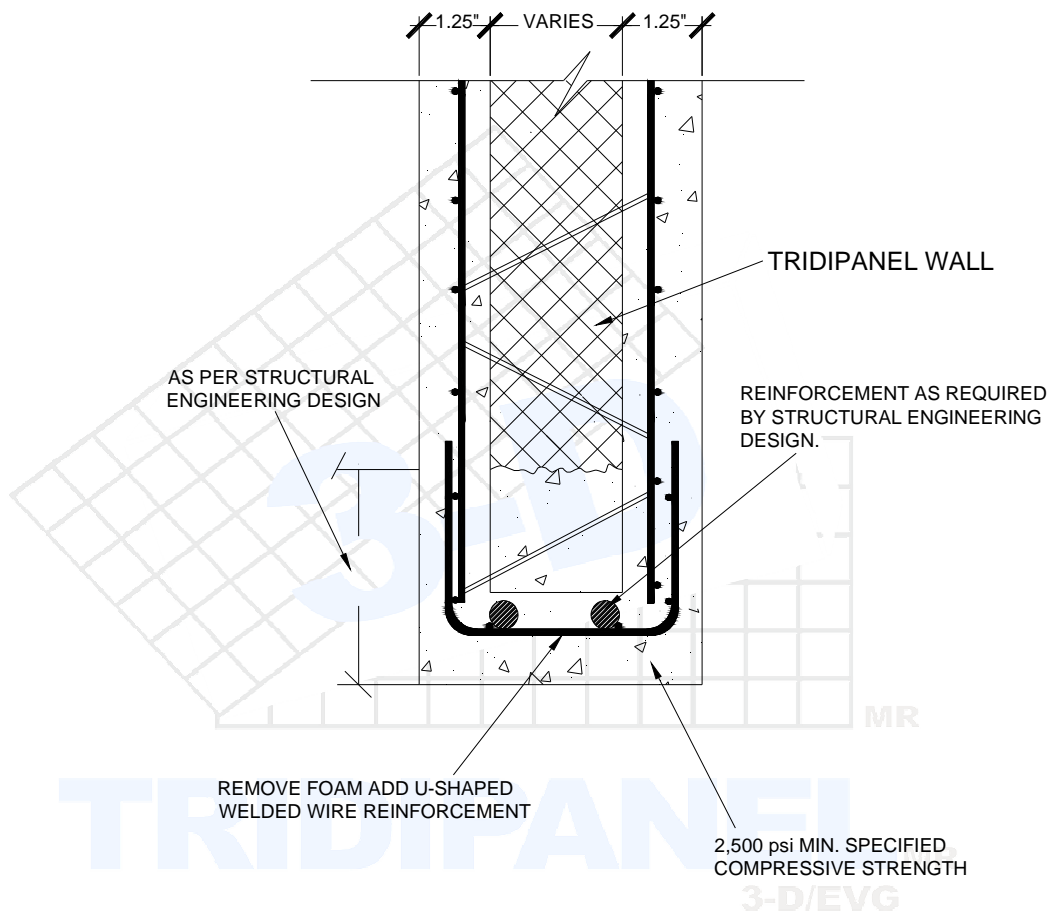
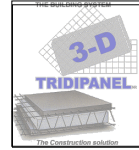
NOTE: THE OVERLAP WIRE SIZE SHOULD BE THE SAME SIZE OR GREATER THAN THE PANEL WIRE SIZE.



### TYPICAL WALL JOINT OVERLAP DETAIL

Scale: None

DETAIL
7
February 2013
Revision # 1

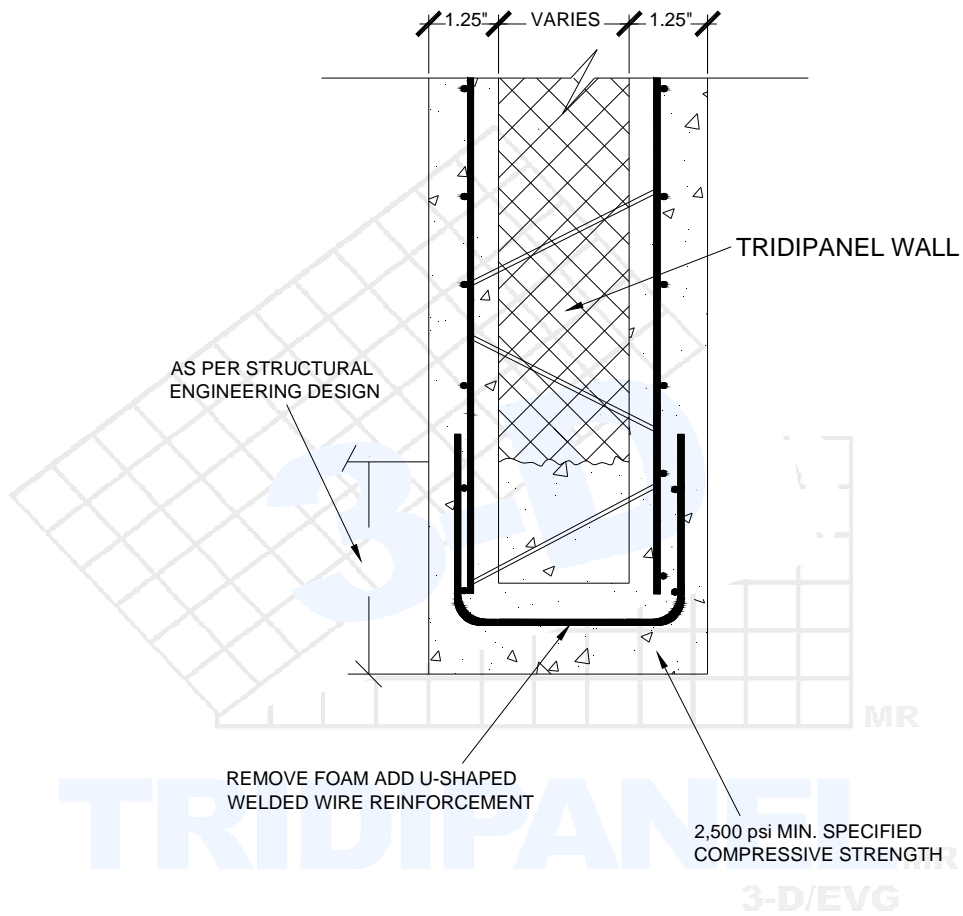
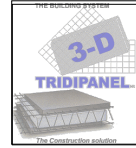


### TYPICAL DETAIL LINTEL BEAM WITH REINFORCEMENT (FOR USE ON LARGE OPENINGS)

Scale: None

DETAIL
8
February 2013
Revision # 1

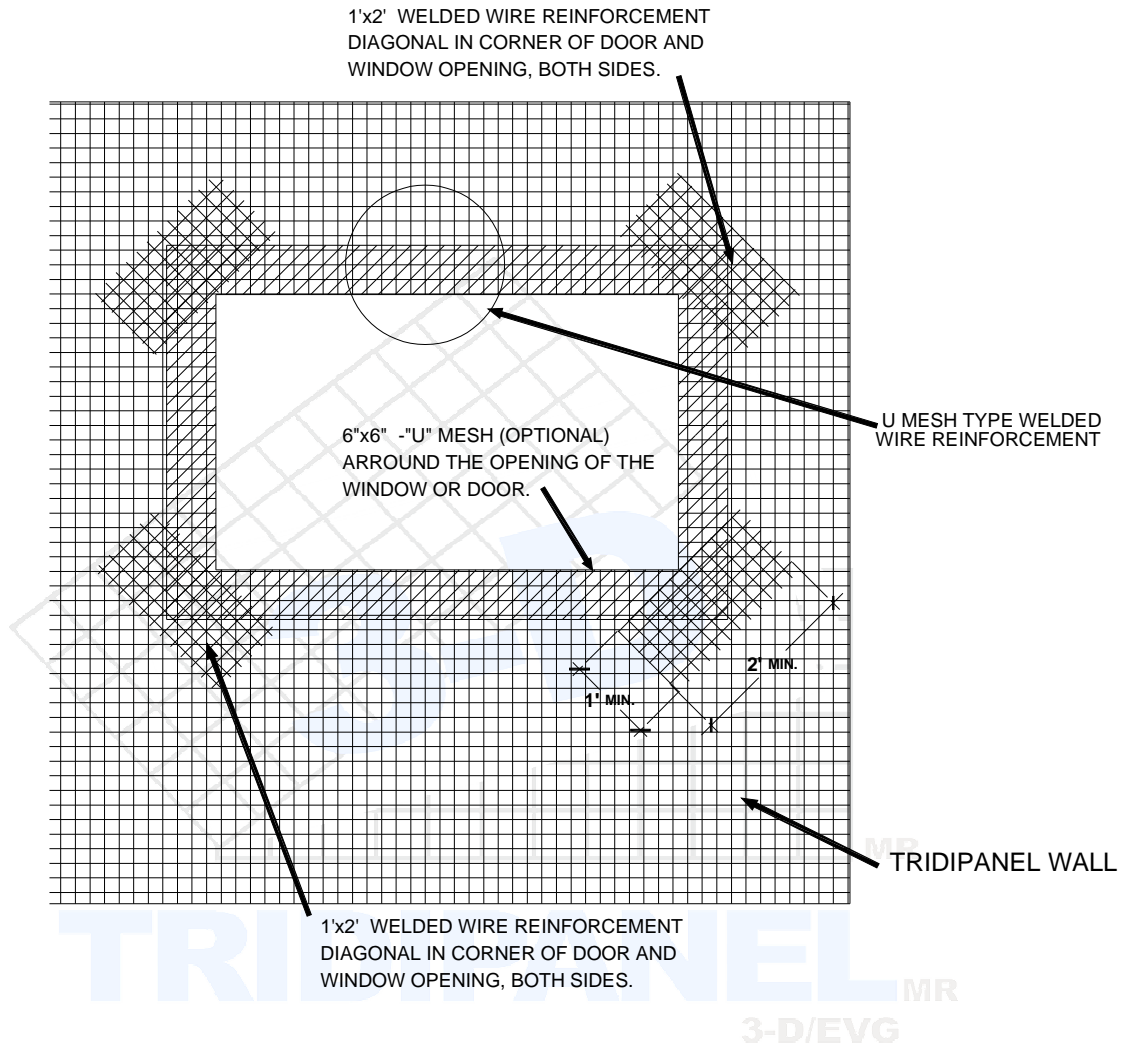
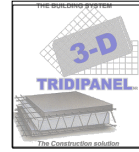




## TYPICAL DETAIL LINTEL BEAM (FOR USE ON OPENINGS)

Scale: None

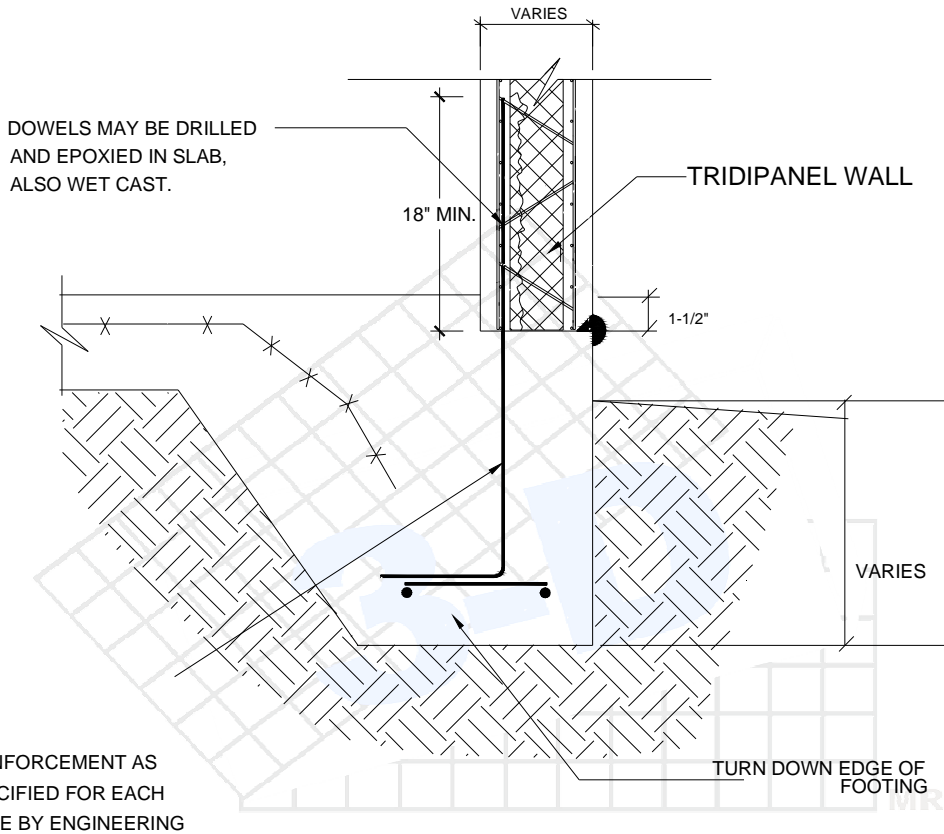
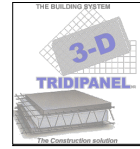
DETAIL
9
February 2013
Revision # 1



## TYPICAL DETAIL OF REINFORCEMENT IN DOORS AND WINDOWS CORNERS

Scale: None

DETAIL
<b>10</b>
February 2013
Revision # 1

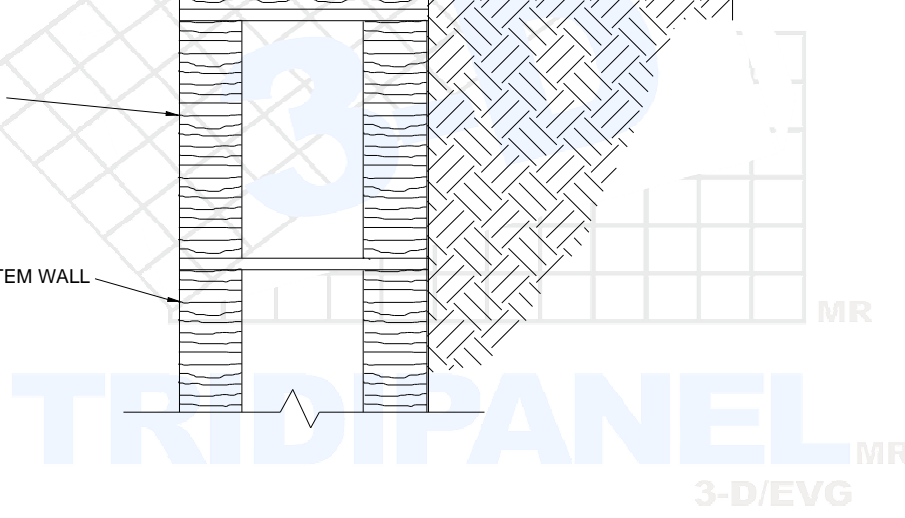
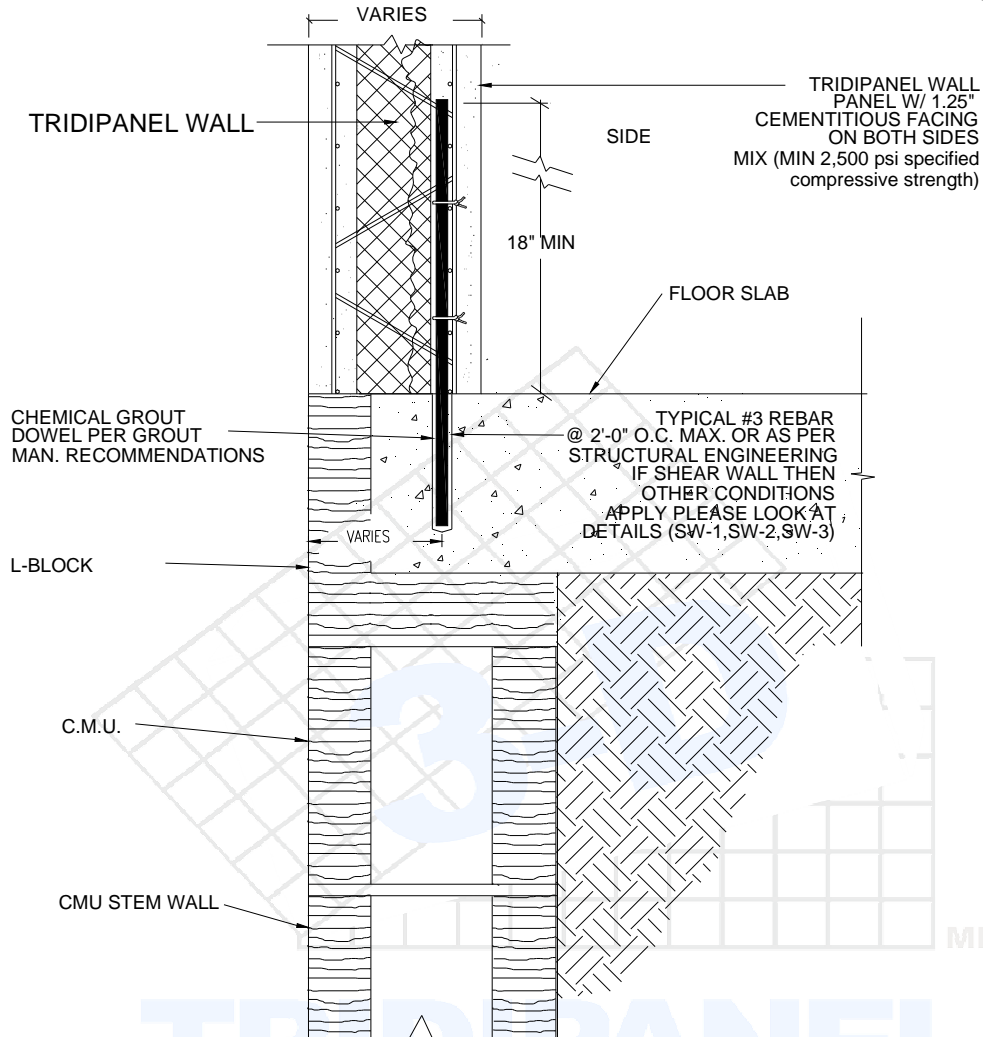
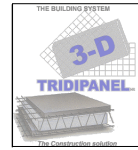


TRIDIPANEL<sup>MR</sup>  
3-D/EVG

### TYPICAL TURN DOWN EDGE FOOTING / WALL CONNECTION

Scale: None

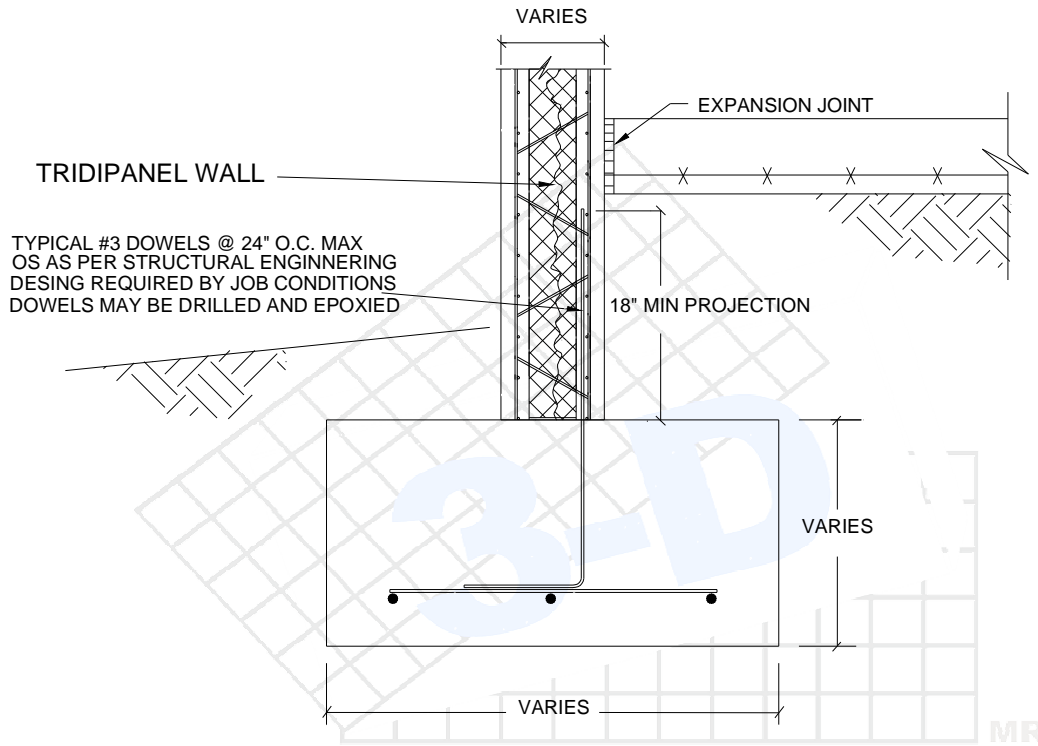
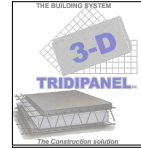
DETAIL
11
February 2013
Revision # 1



## TYPICAL STEM WALL

Scale: None

DETAIL
<b>12</b>
February 2013
Revision # 1

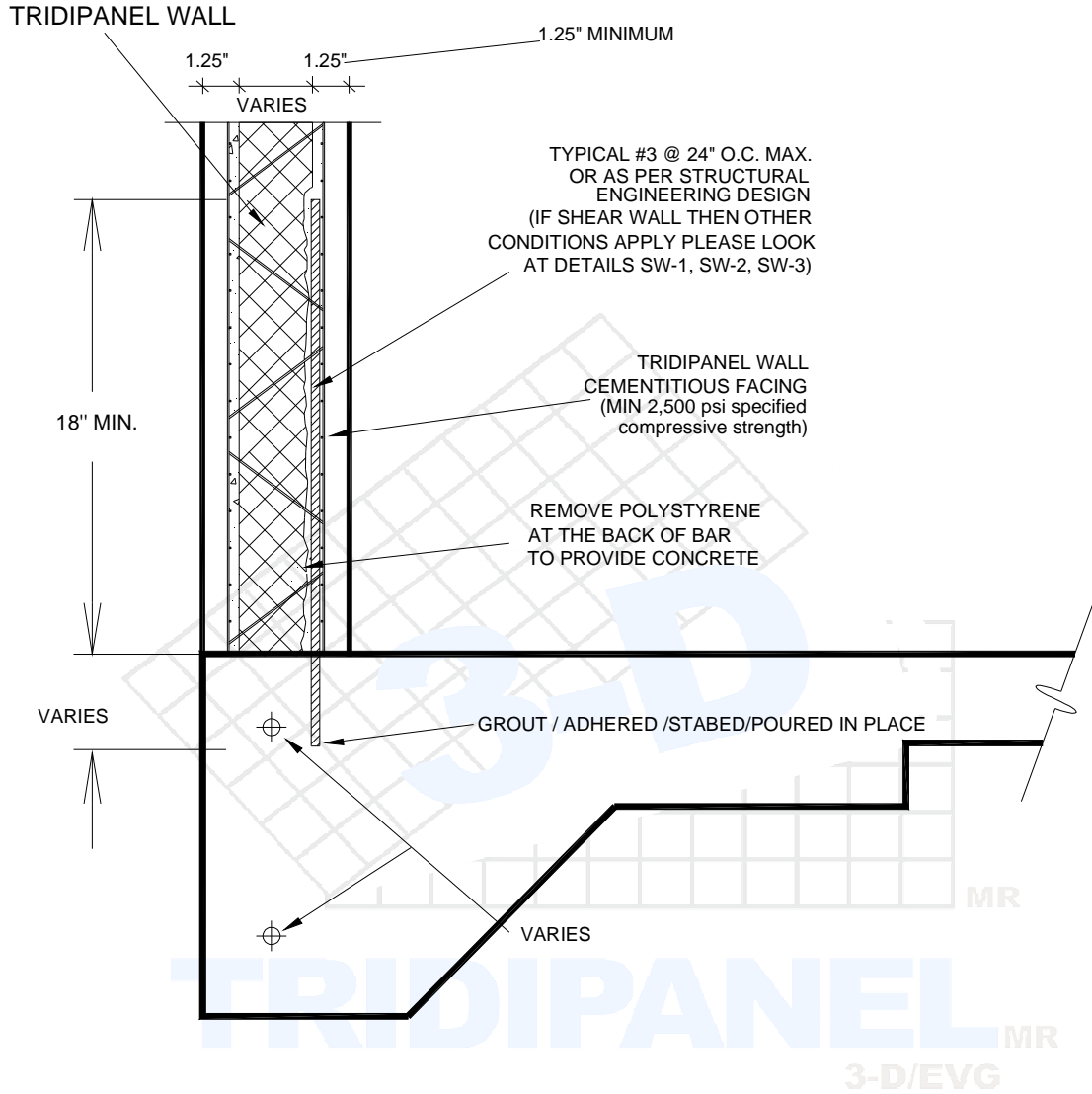
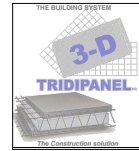


TRIDIPANEL<sub>MR</sub>  
3-D/EVG

### TYPICAL FOOTING / WALL CONNECTION

Scale: None

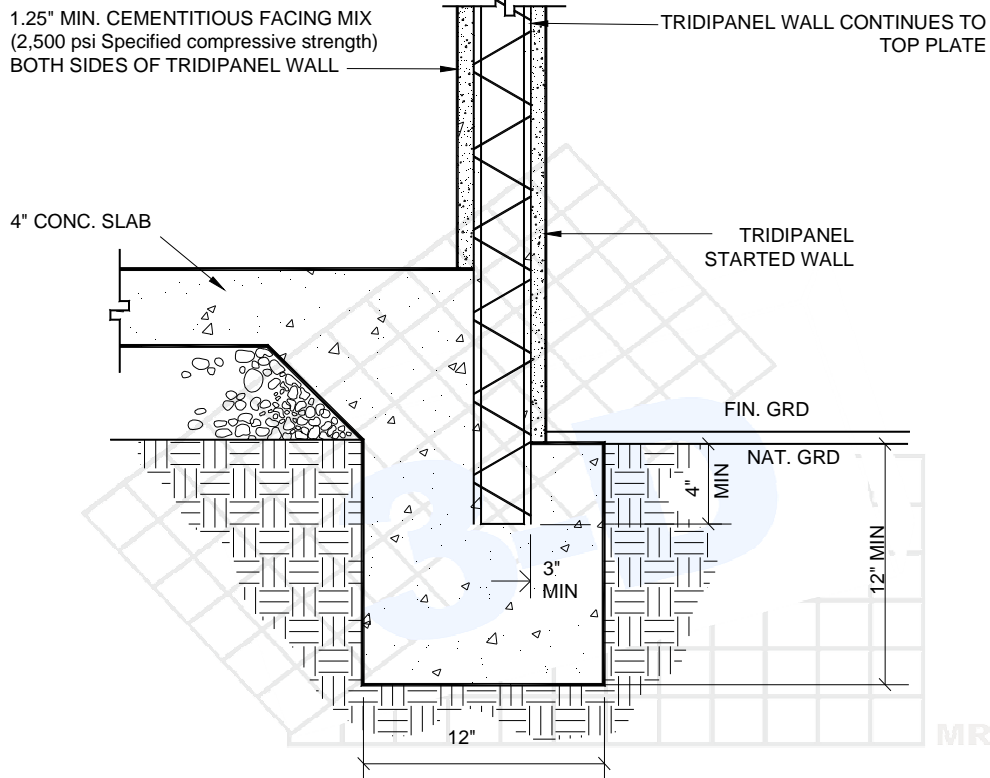
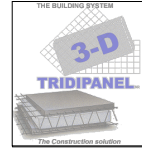
DETAIL
<b>13</b>
February 2013
Revision # 1



## TYPICAL EDGE FOOTING/WALL CONNECTION (PERIMETER WALLS)

Scale: None

DETAIL
14
February 2013
Revision # 1

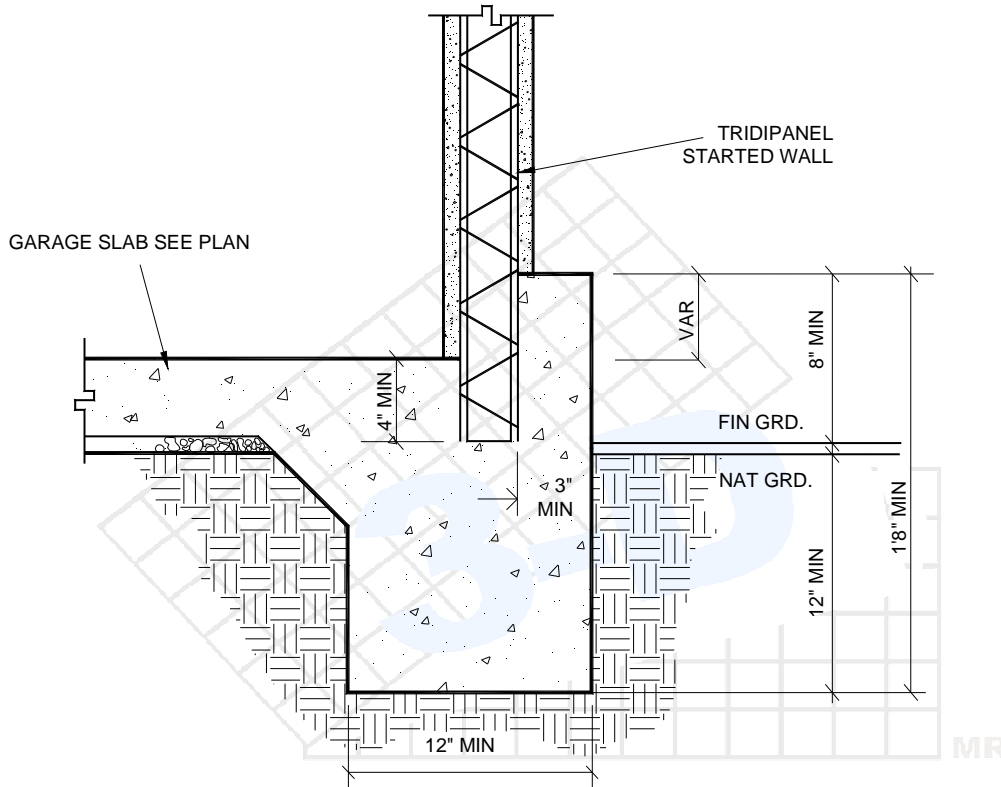
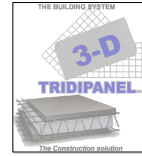


TRIDIPANEL<sub>MR</sub>  
3-D/EVG

## EXTERIOR FOOTING

Scale: None

DETAIL
<b>15</b>
February 2013
Revision # 1



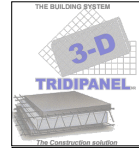
TRIDIPANEL<sub>MR</sub>  
3-D/EVG

### EXTERIOR FOOTING

Scale: None

DETAIL
<b>16</b>
February 2013
Revision # 1



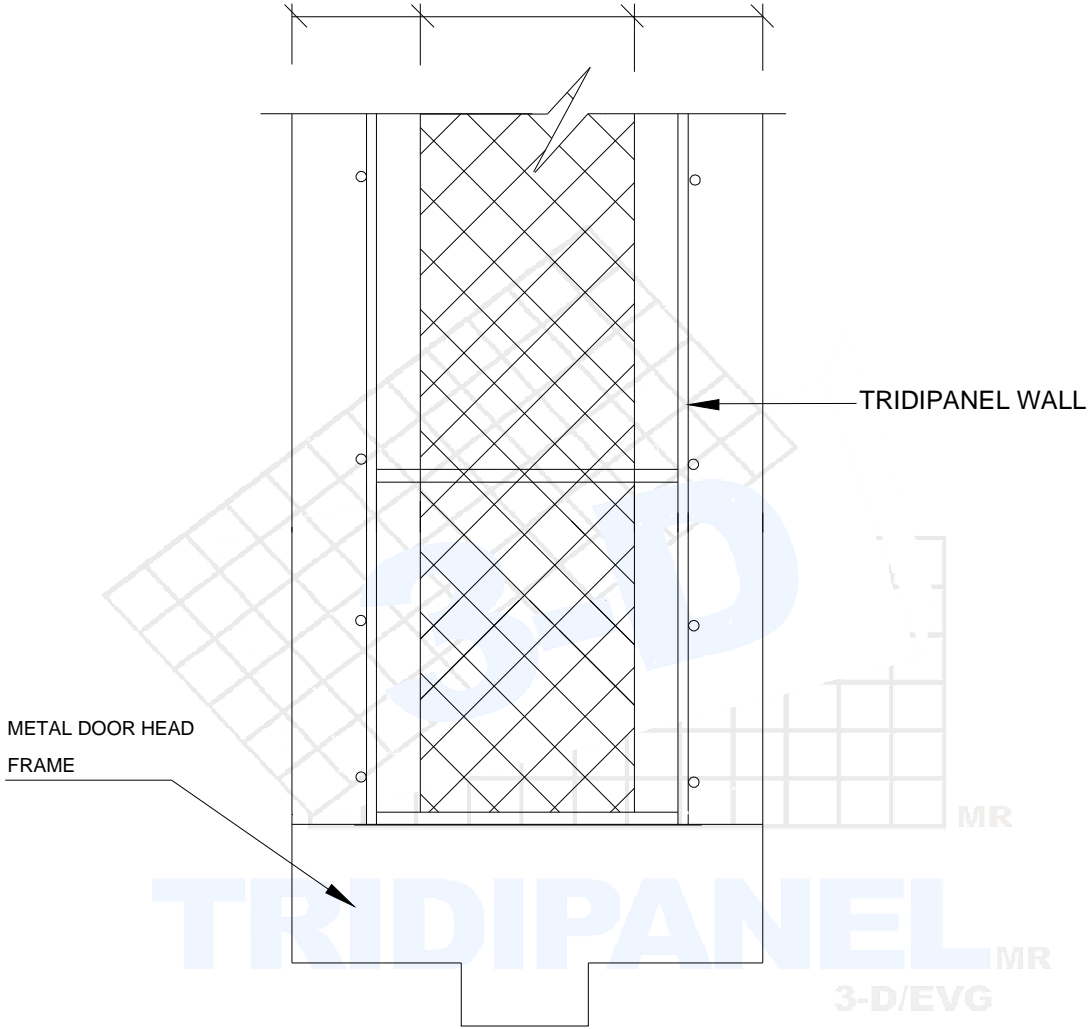


1.25" MIN. CEMENTITIOUS  
FACING MIX (2,500 psi Specified  
compressive strength) BOTH  
SIDES OF TRIDIPANEL WALL

1.25"

VARIES

1.25"



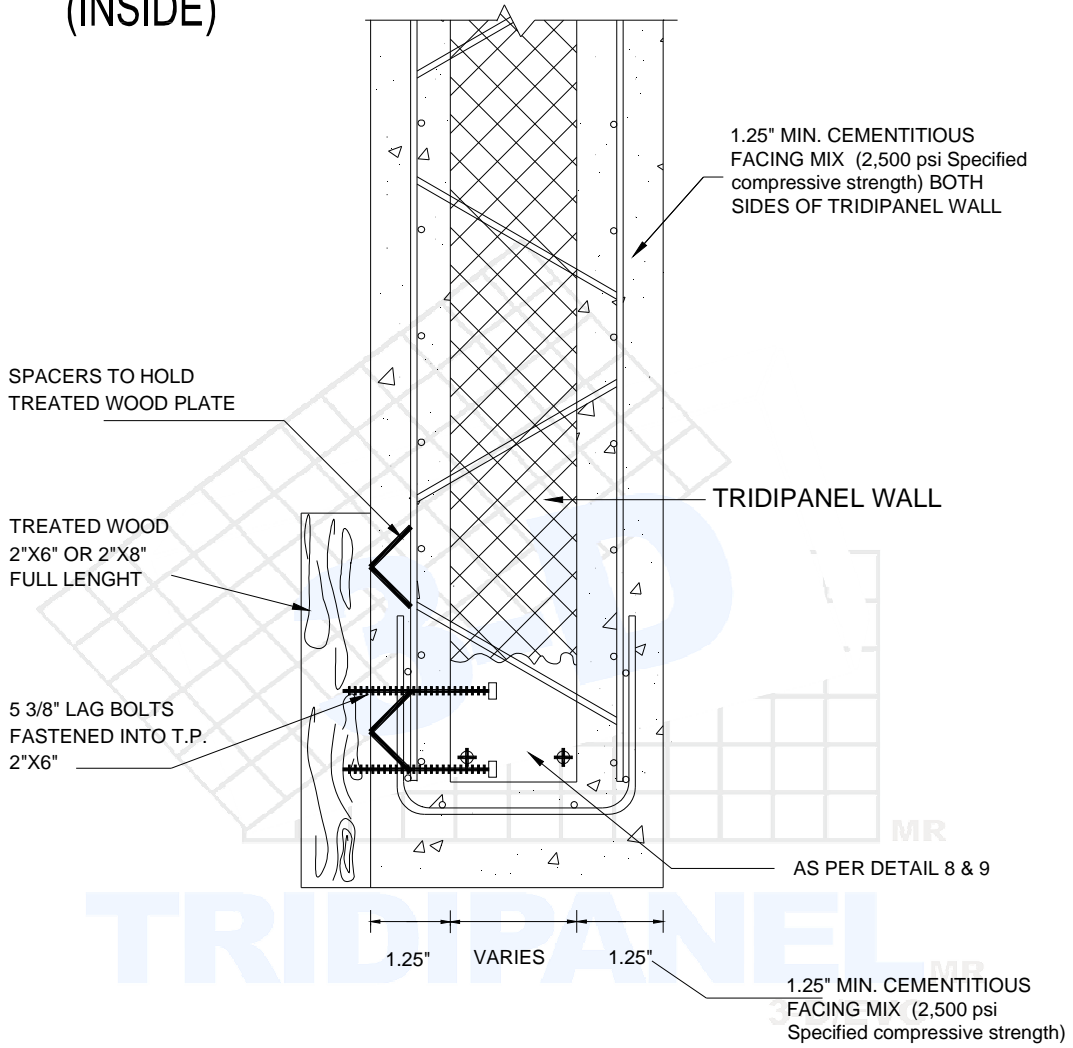
### TYPICAL DOOR HEAD

Scale: None

DETAIL
<b>17</b>
February 2013
Revision # 1



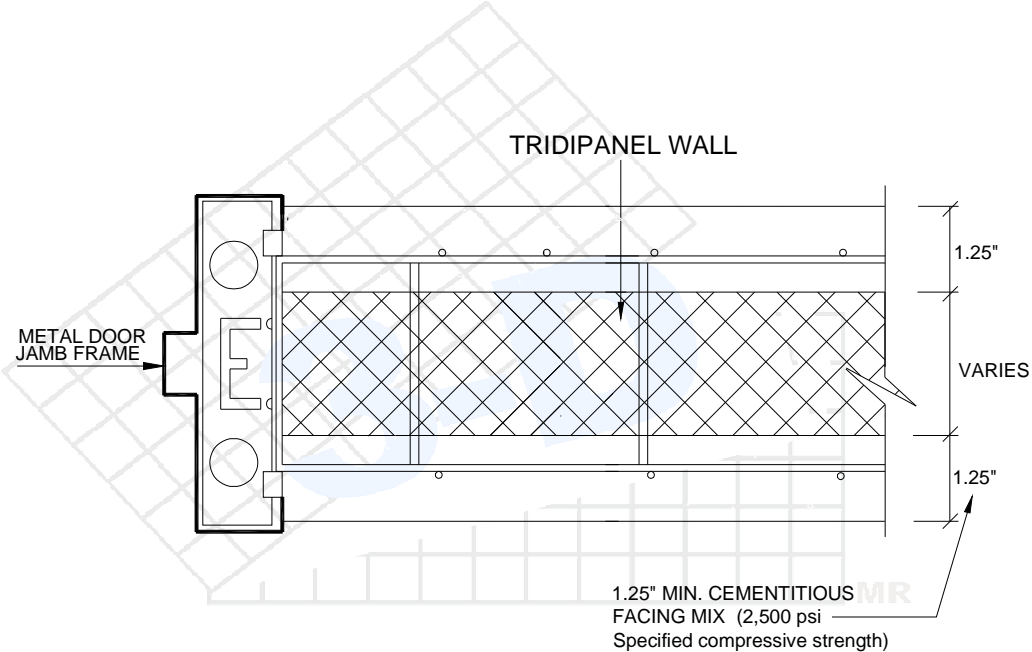
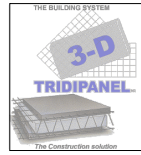
(INSIDE)



TYPICAL DETAIL OF GARAGE DOOR  
HEADER VIEW

Scale: None

DETAIL
<b>18</b>
February 2013
Revision # 1

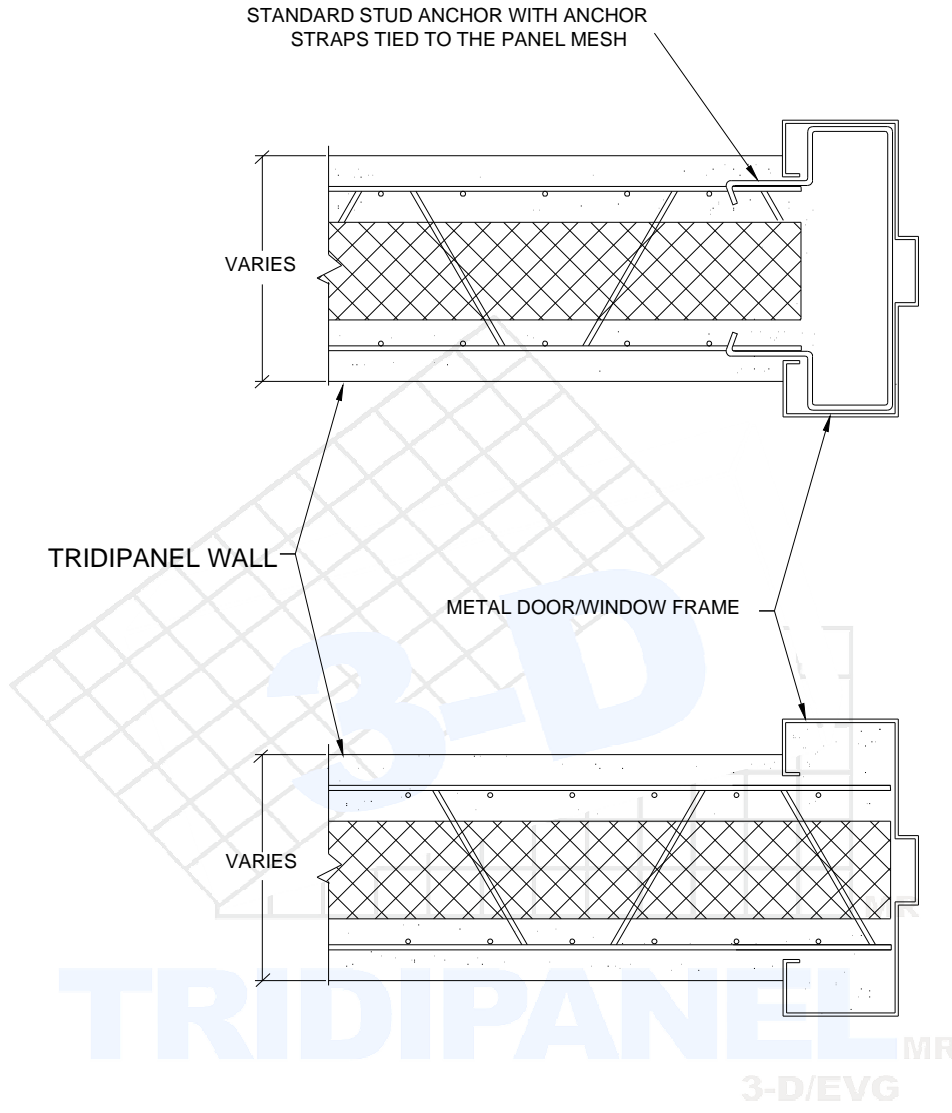
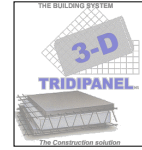


TRIDIPANEL<sup>MR</sup>  
3-D/EVG

### TYPICAL DOOR JAMB

Scale: None

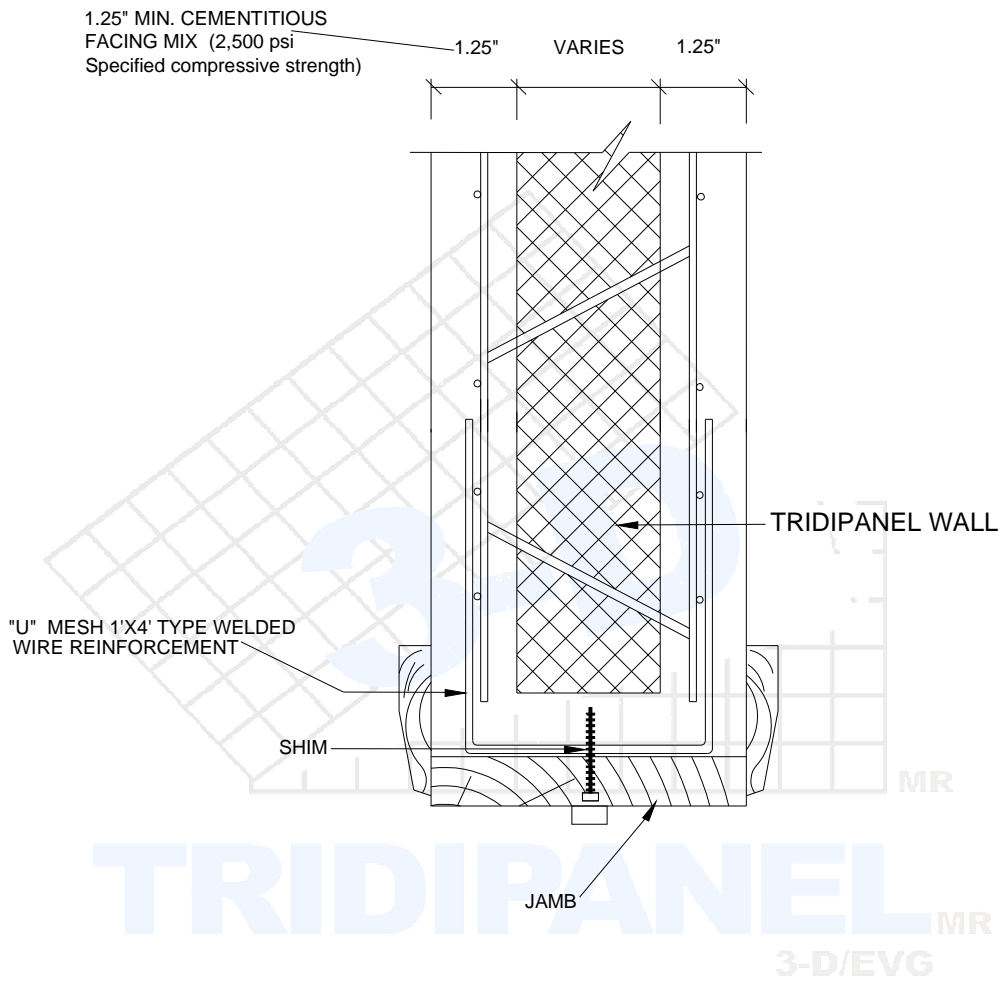
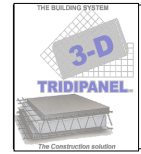
DETAIL
<b>19</b>
February 2013
Revision # 1



## METAL WINDOW & DOOR DETAILS

Scale: None

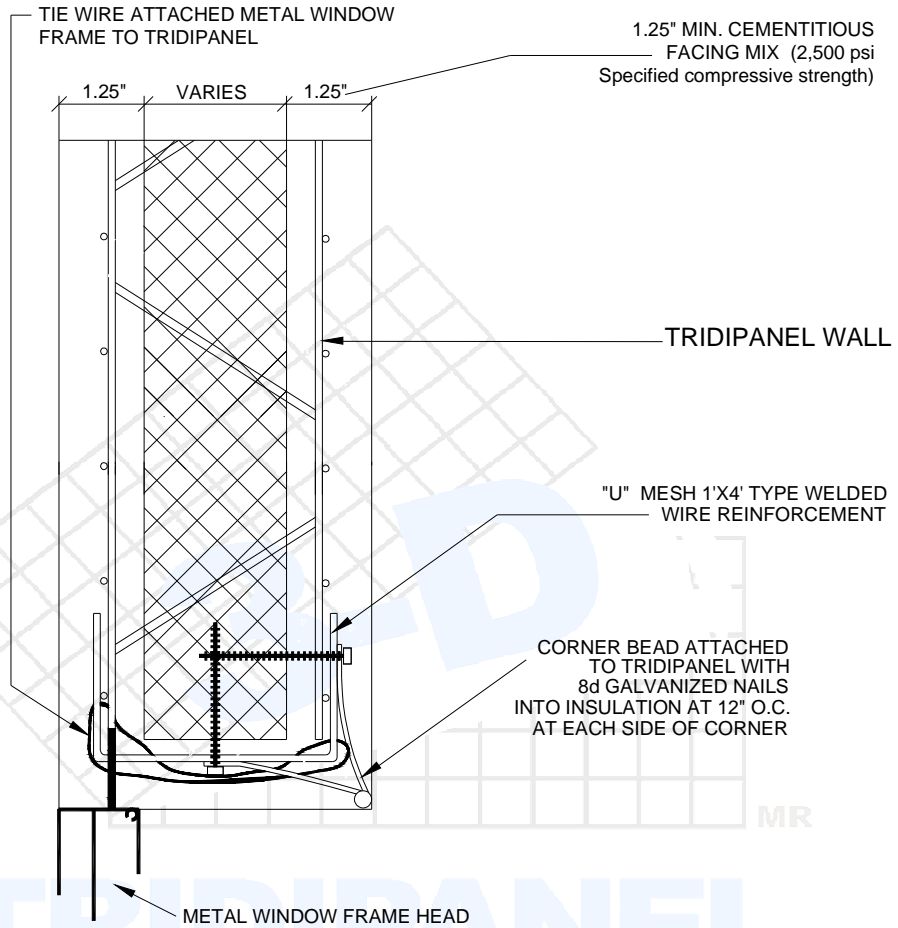
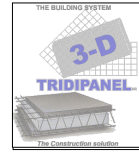
DETAIL
<b>20</b>
February 2013
Revision # 1



## WOOD DOOR HEADER TO TRIDIPANEL

Scale: None

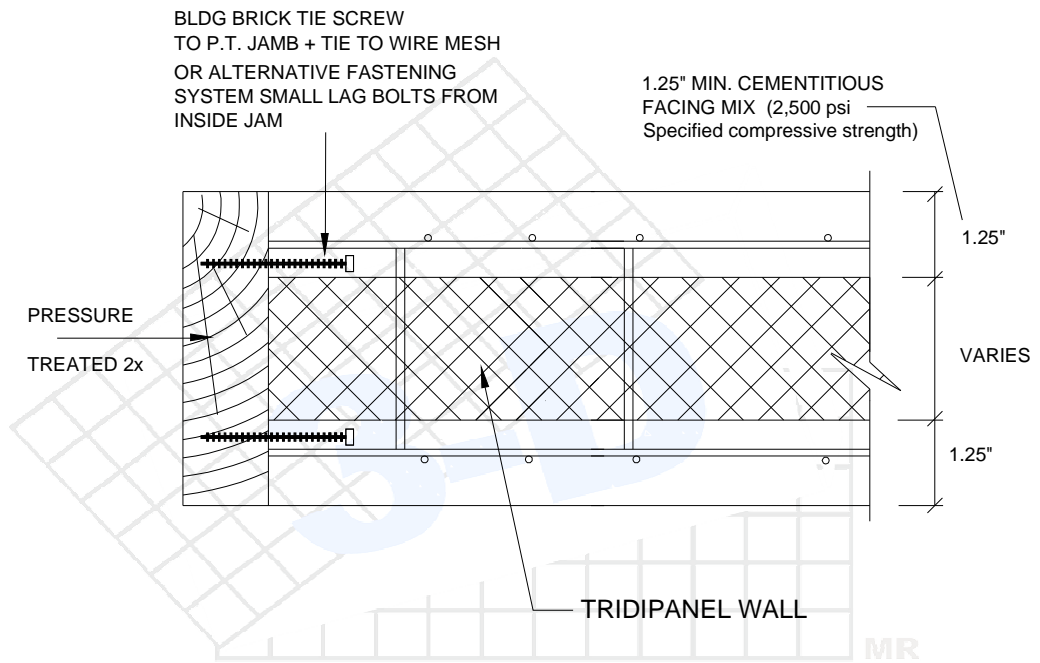
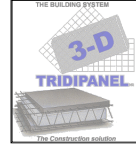
DETAIL
21
February 2013
Revision # 1



### TYPICAL WINDOW HEAD

Scale: None

DETAIL
<b>22</b>
February 2013
Revision # 1

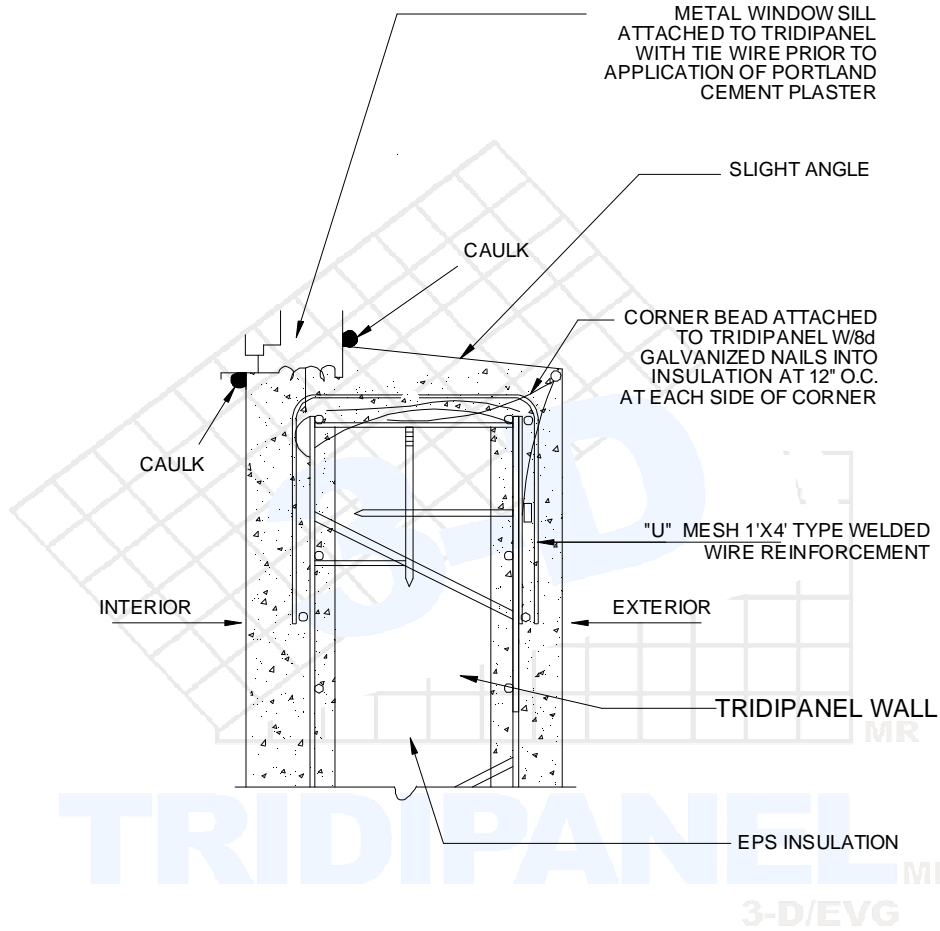


**TRIDIPANEL** MR  
3-D/EVG

**TYPICAL DETAIL OF WINDOW/DOOR  
JAMB**

Scale: None

DETAIL
<b>23</b>
February 2013
Revision # 1

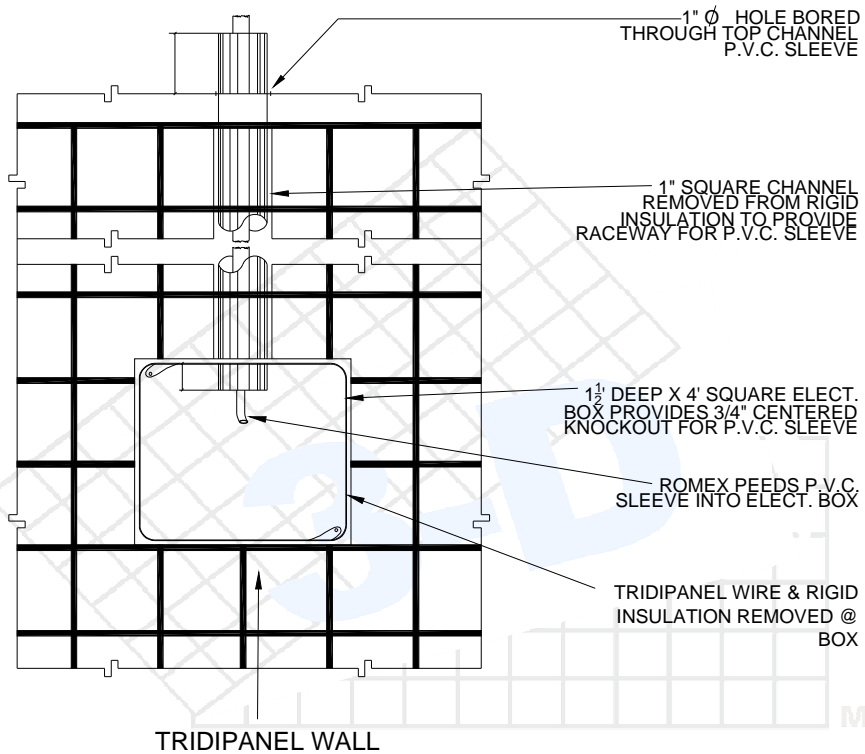
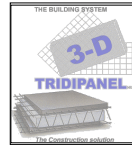


### TYPICAL WINDOW SILL

Scale: None

DETAIL
<b>24</b>
February 2013
Revision # 1



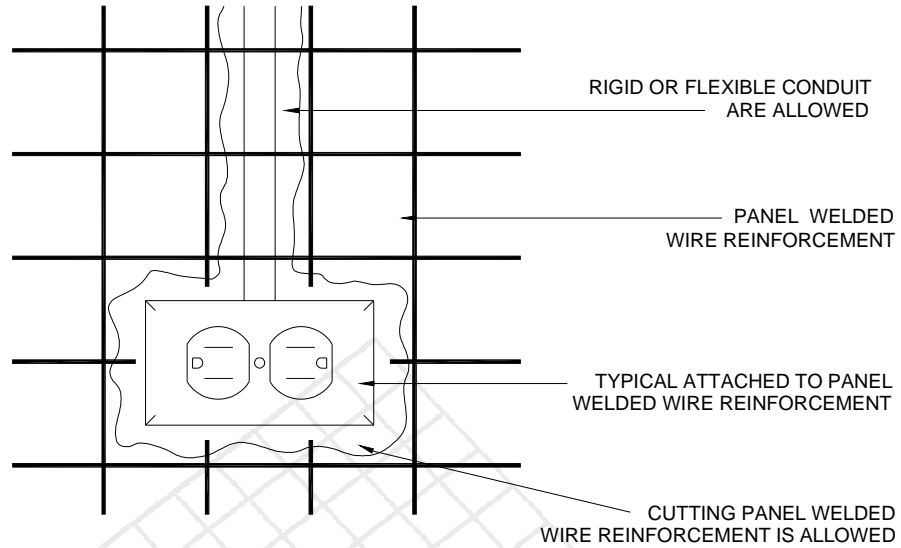
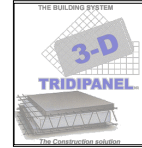


TRIDIPANEL MR  
3-D/EVG

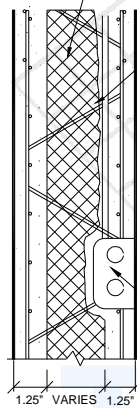
### ELECTRICAL BOX @ TRIDIPANEL

Scale: None

DETAIL
<b>25</b>
February 2013
Revision # 1

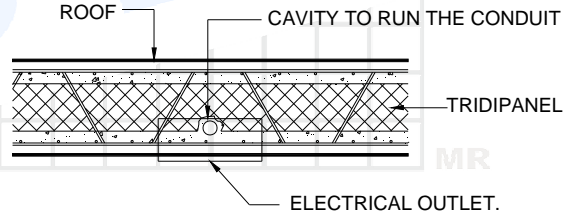


TRIDIPANEL WALL



THE POLYSTYRENE MUST BE SHRUNK SO THAT THE CONDUIT CAN RUN BETWEEN THE MESH AND FOAM

CUT THE MESH WHERE YOU NEED TO SET AN ELECTRICAL OUTLET.

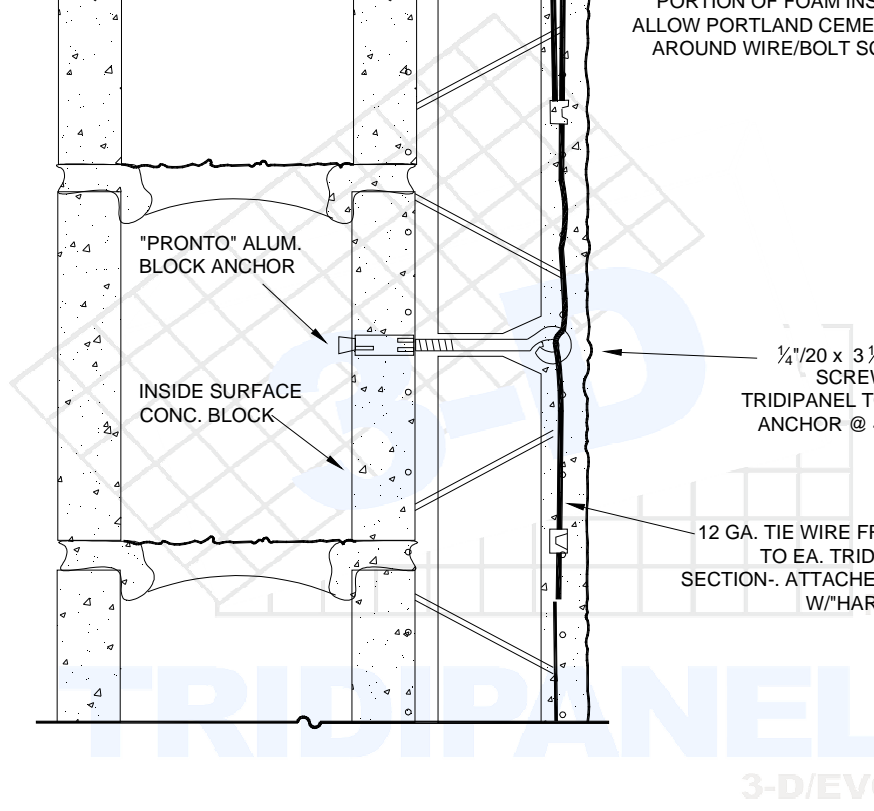
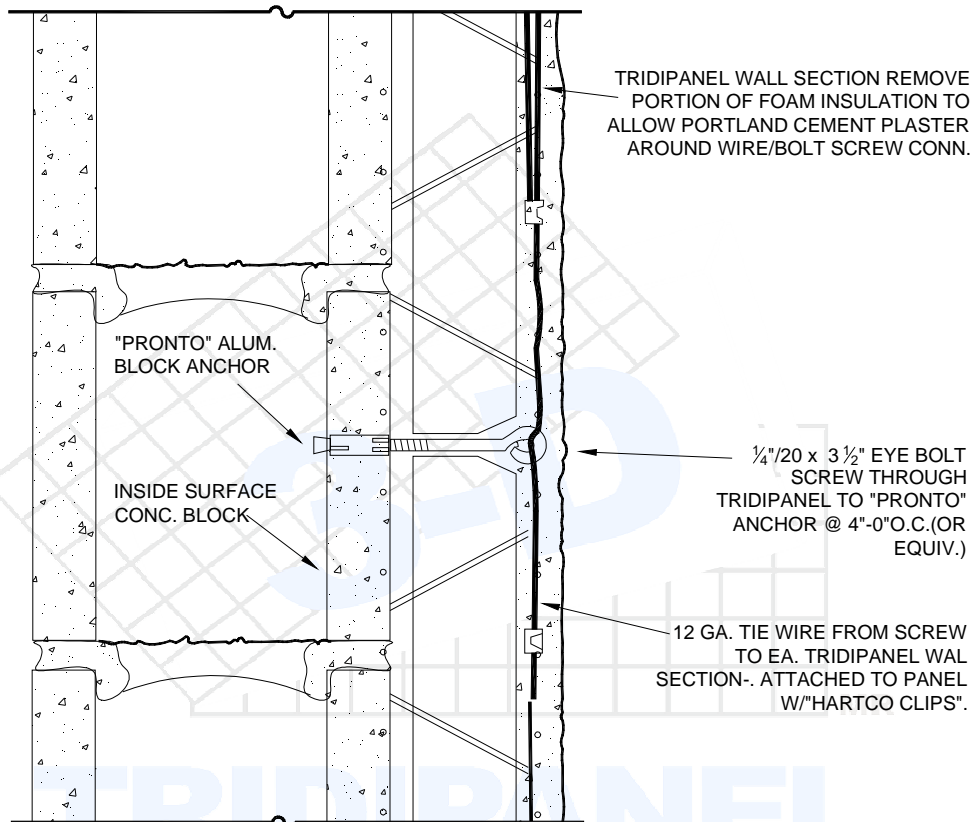
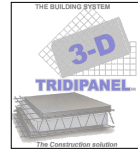


## TYPICAL ELECTRICAL INSTALLATION DETAILS

Scale: None

**NOTE: BE SURE TO COVER ELECTRICAL OUTLETS BEFORE CEMENTITIOUS SKIN APPLICATION.**

DETAIL
<b>26</b>
February 2013
Revision # 1



## TRIDIPANEL AGAINST HOLLOW CONC. BLOCK WALL

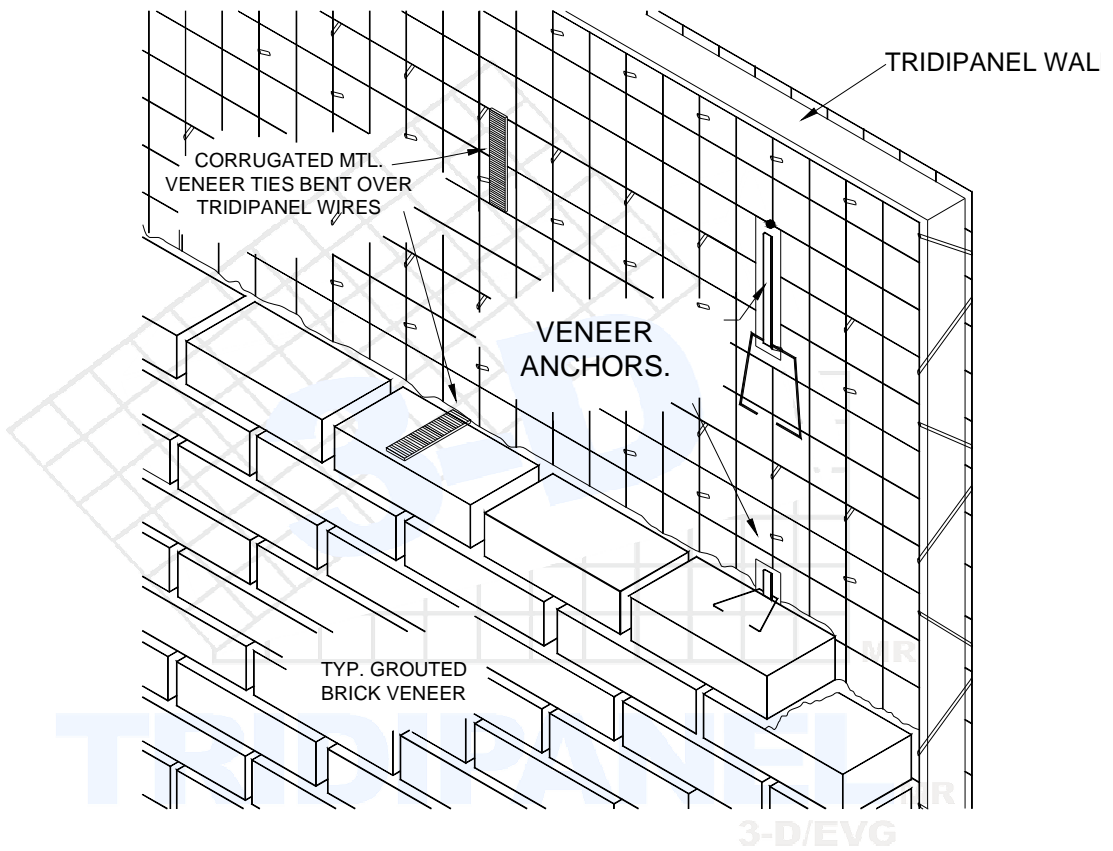
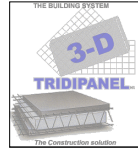
Scale: None

DETAIL

27

February 2013

Revision # 1



# BRICK VENEER CONN TO TRIDIPANEL WALL

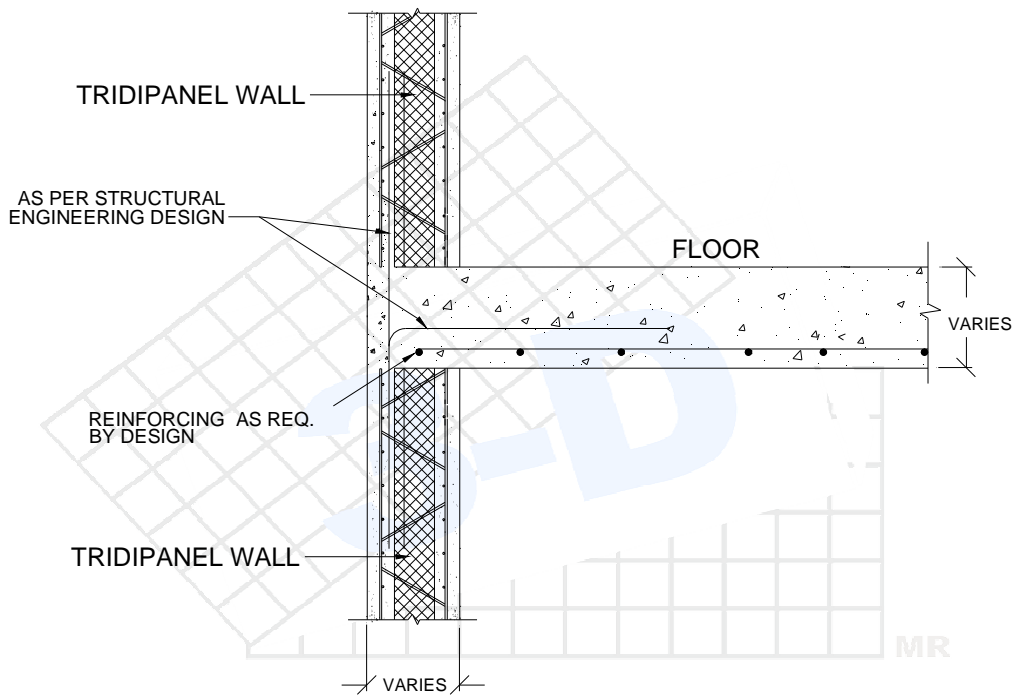
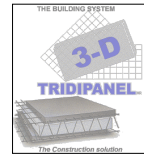
Scale: None

DETAIL

28

February 2013

Revision # 1

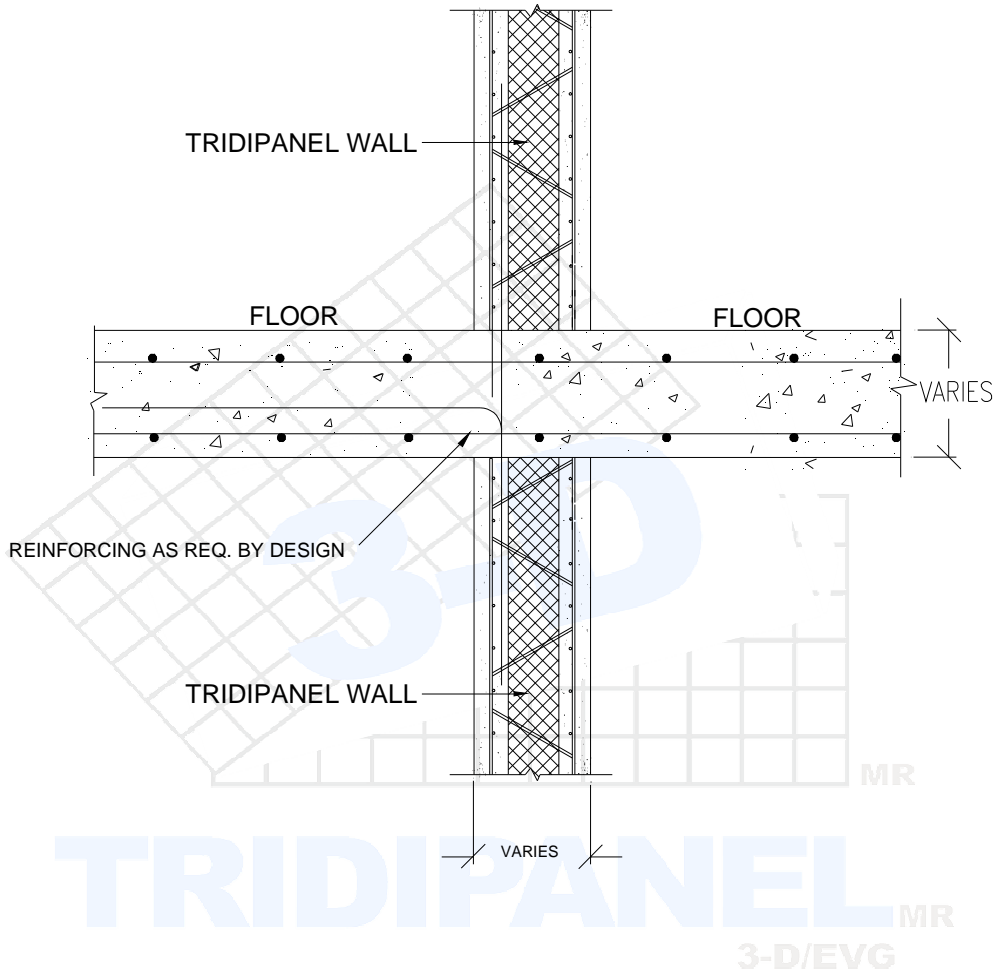
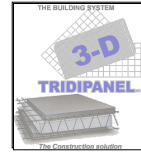


**TRIDIPANEL** MR  
3-D/EVG

**TYPICAL EXTERIOR TRIDIPANEL WALL /  
CAST-IN-PLACE FLOOR CONN.**

Scale: None

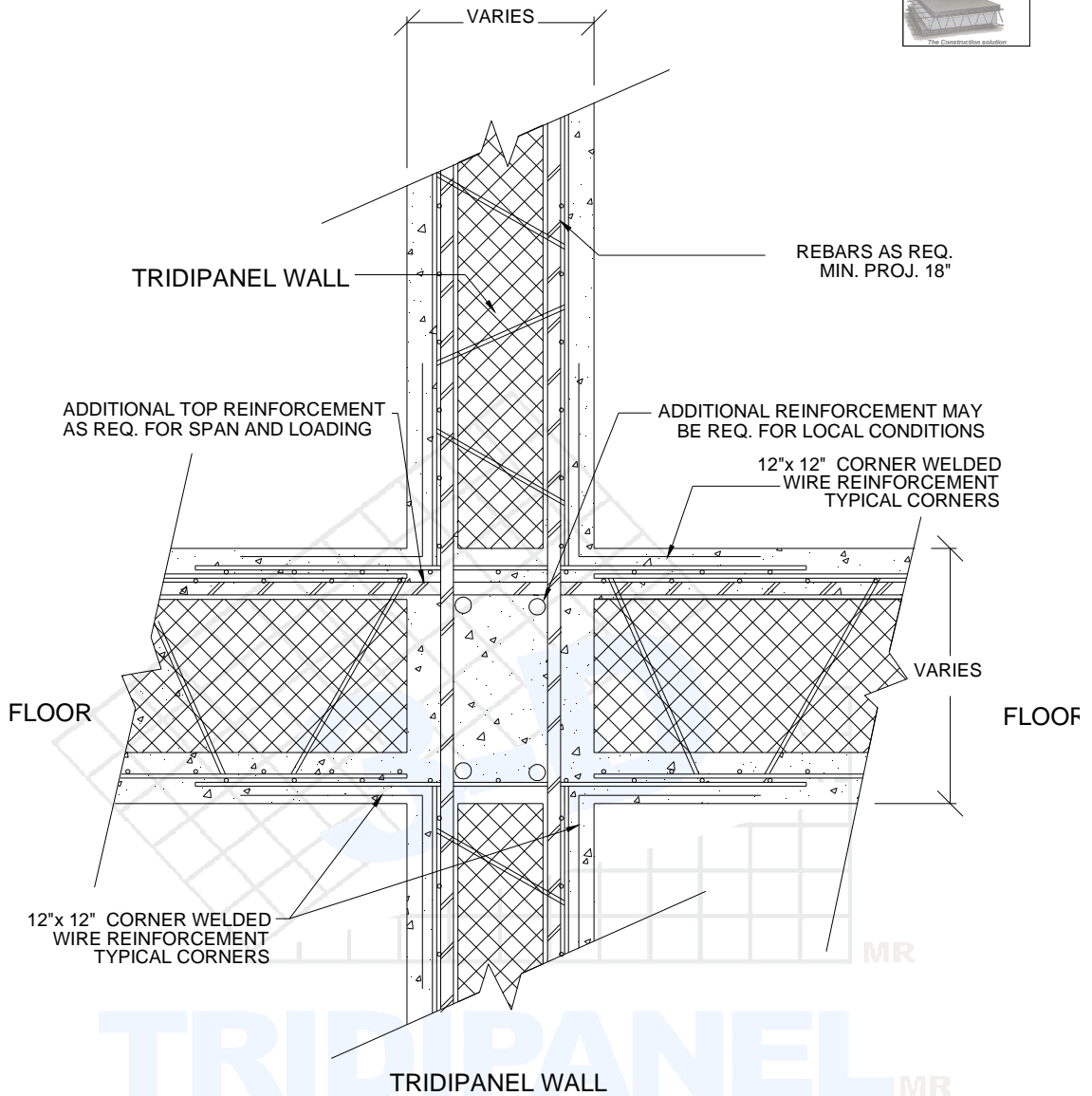
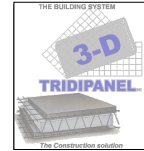
DETAIL
<b>29</b>
February 2013
Revision # 1



TYPICAL INTERIOR TRIDIPANEL WALL /  
CAST-IN-PLACE FLOOR CONN.

Scale: None

DETAIL
<b>30</b>
February 2013
Revision # 1

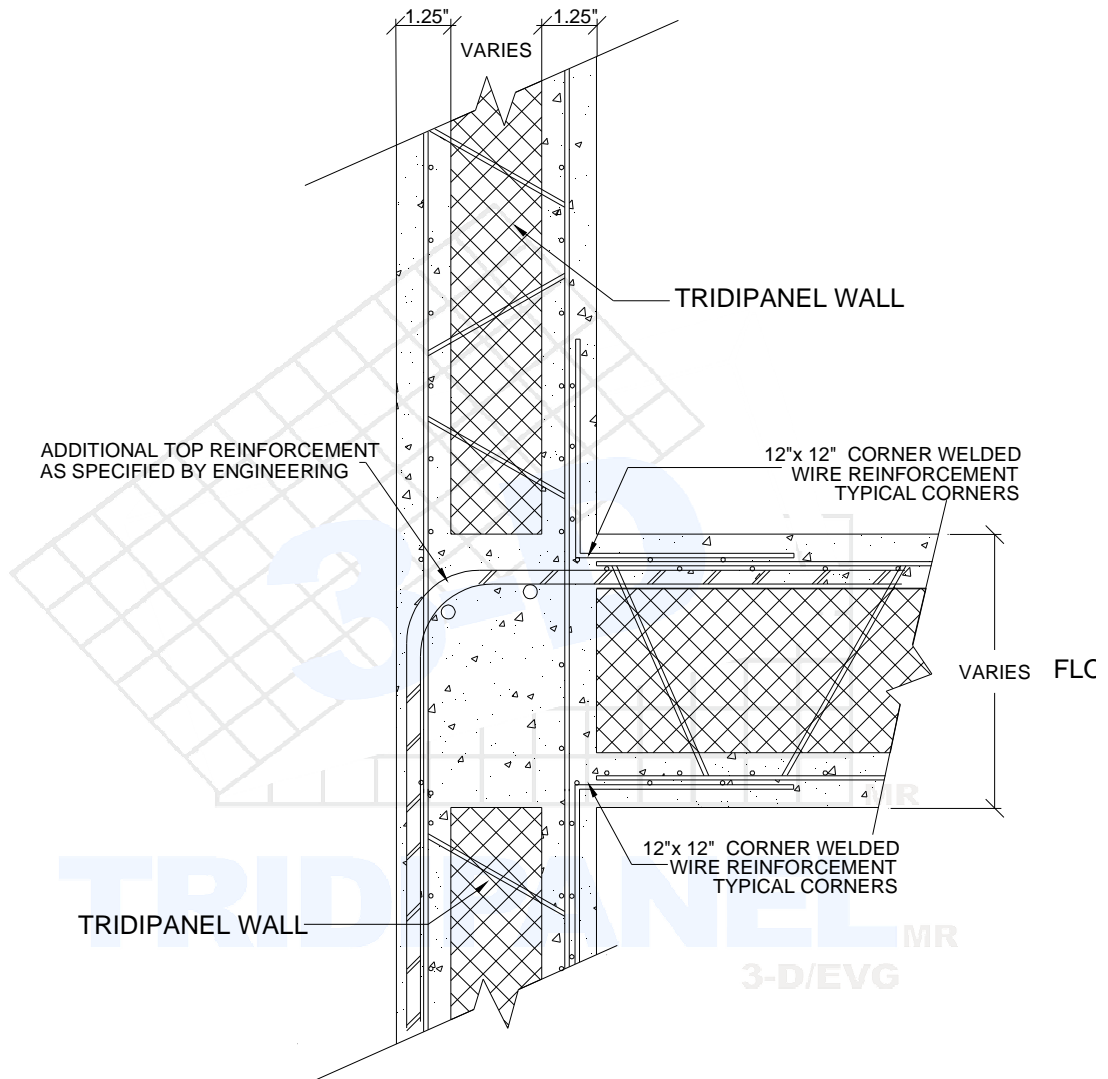
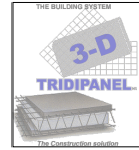


TRIDIPANEL MR  
3-D/EVG

### TYPICAL FLOOR / WALL INTERSECTION REINFORCEMENT AS SPECIFIED BY ENGINEERING

Scale: None

DETAIL
<b>31</b>
February 2013
Revision # 1

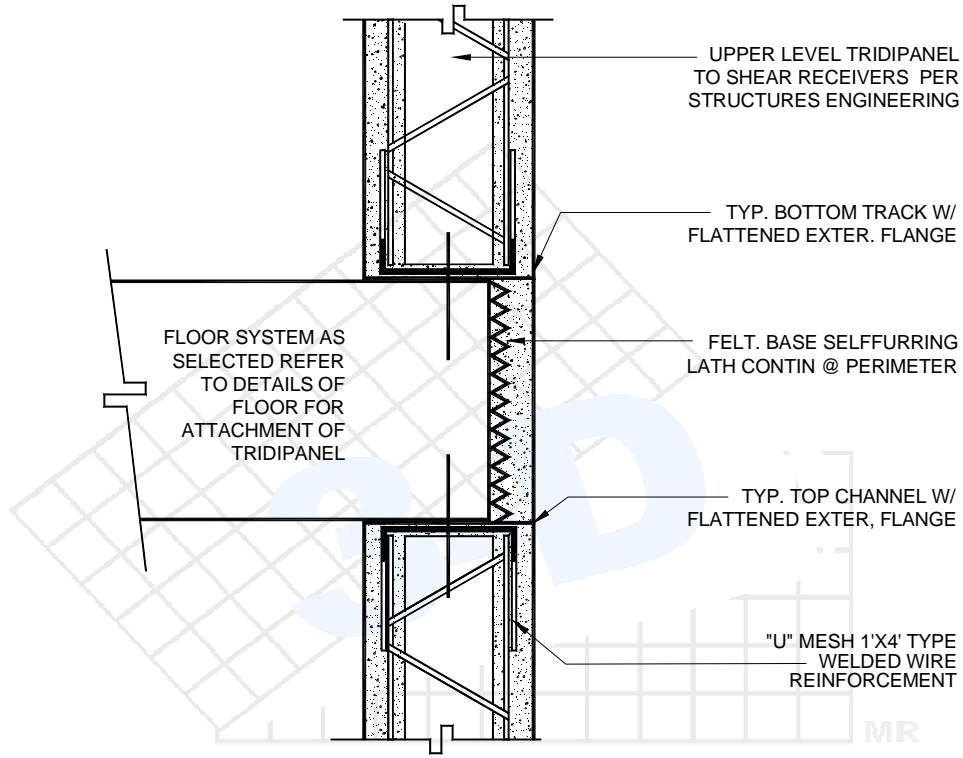
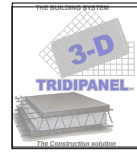


### TYPICAL FLOOR / WALL INTERSECTION

Scale: None

DETAIL
<b>32</b>
February 2013
Revision # 1





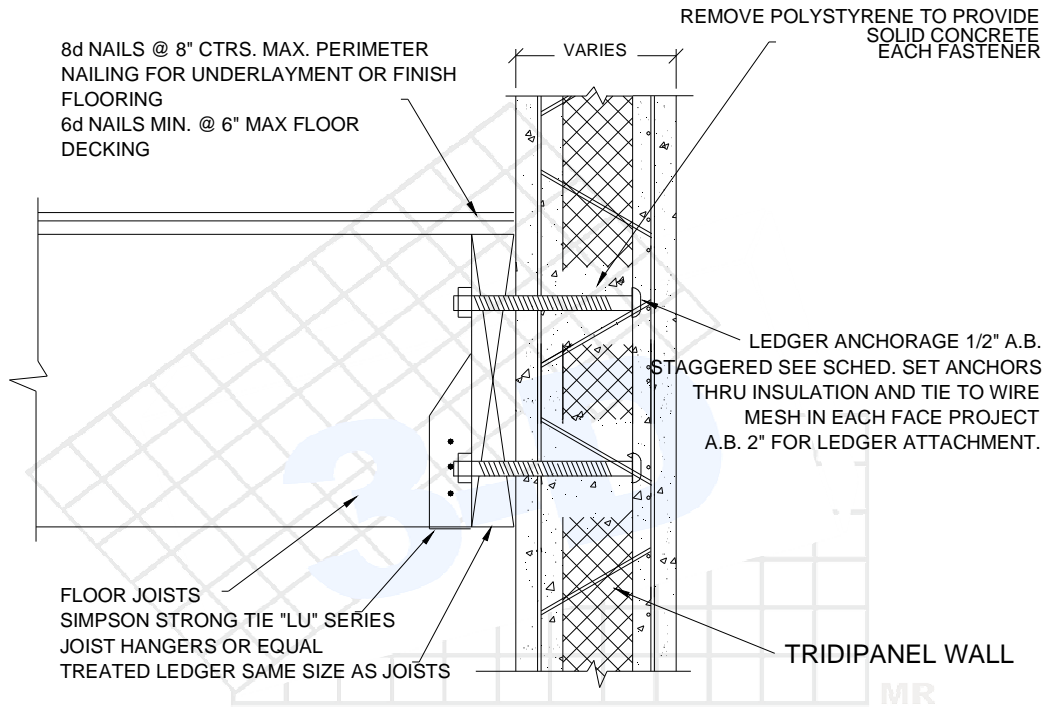
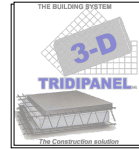
TRIDIPANEL WALL

**TRIDIPANEL** MR  
3-D/EVG

## TYPICAL 2-STORY PERIMETER

Scale: None

DETAIL
<b>33</b>
February 2013
Revision # 1

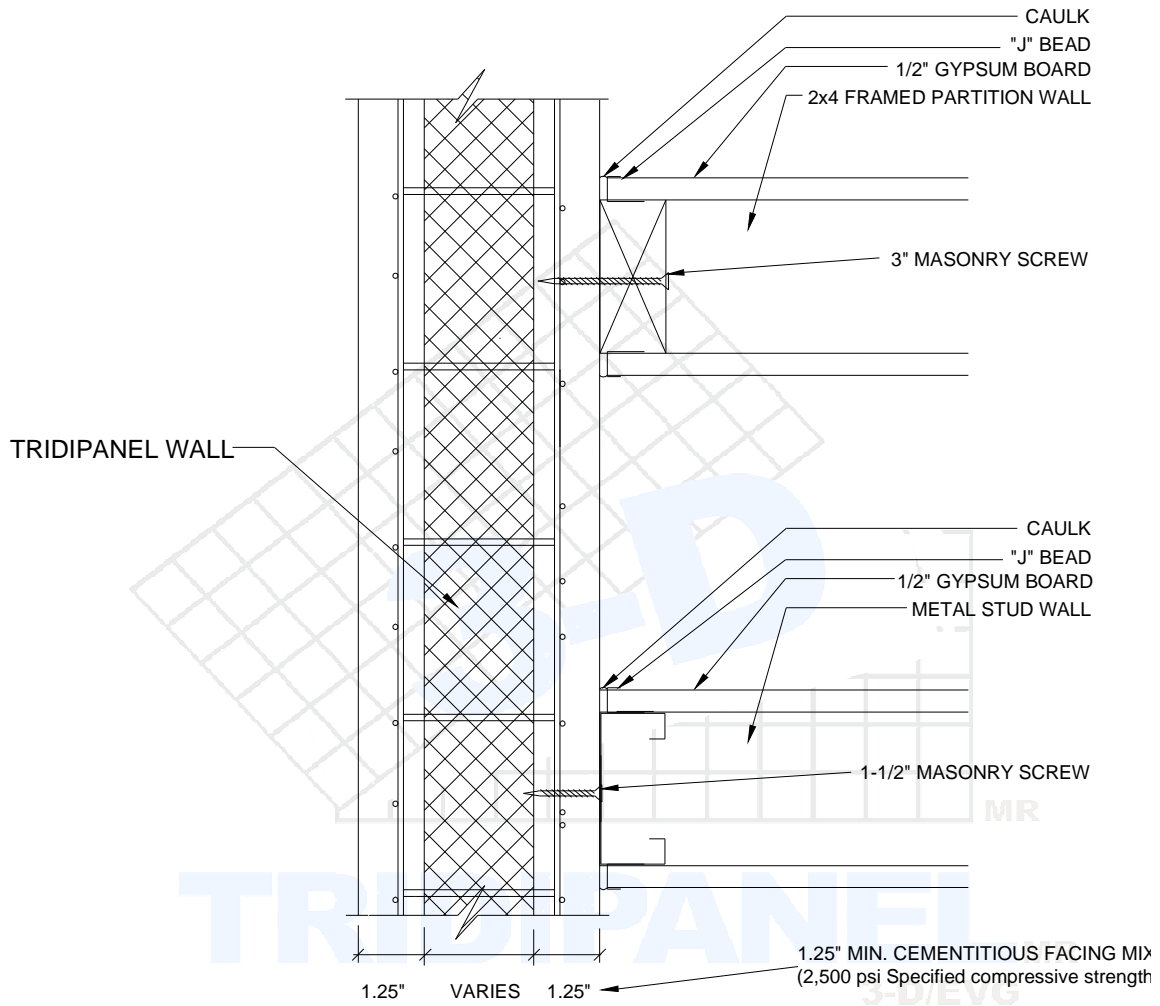
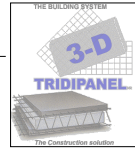


TRIDIPANEL<sub>MR</sub>  
3-D/EVG

## TYPICAL LEDGER CONNECTION

Scale: None

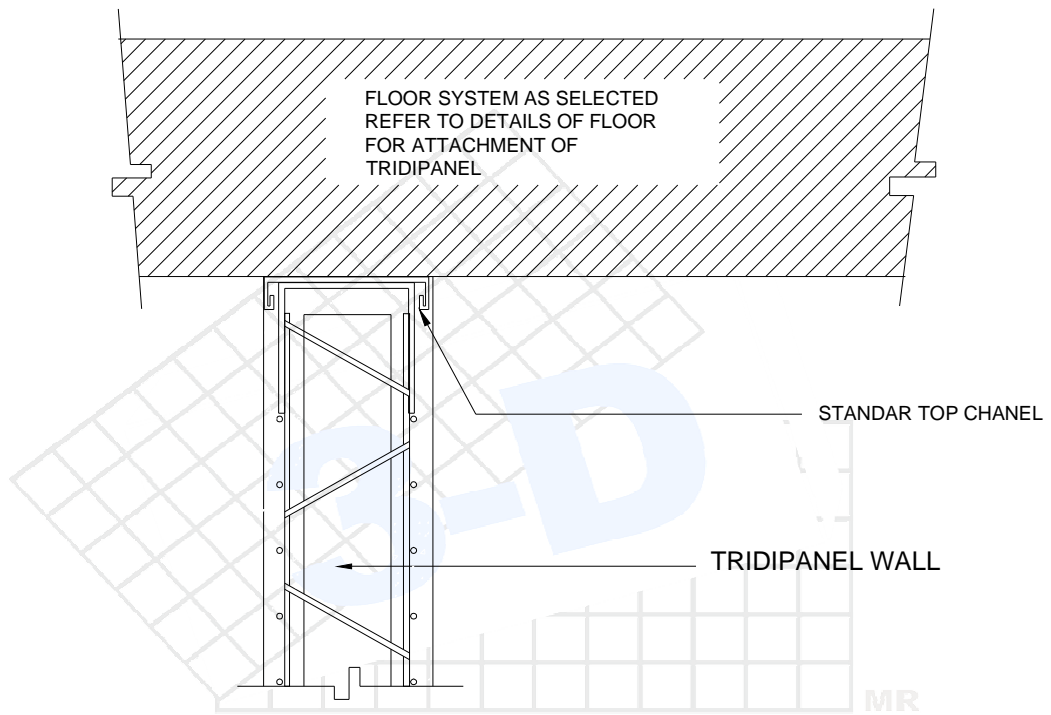
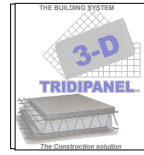
DETAIL
34
February 2013
Revision # 1



## PARTITION WALL INTERSECTION WOOD FRAME / METAL STUD

Scale: None

DETAIL
<b>35</b>
February 2013
Revision # 1

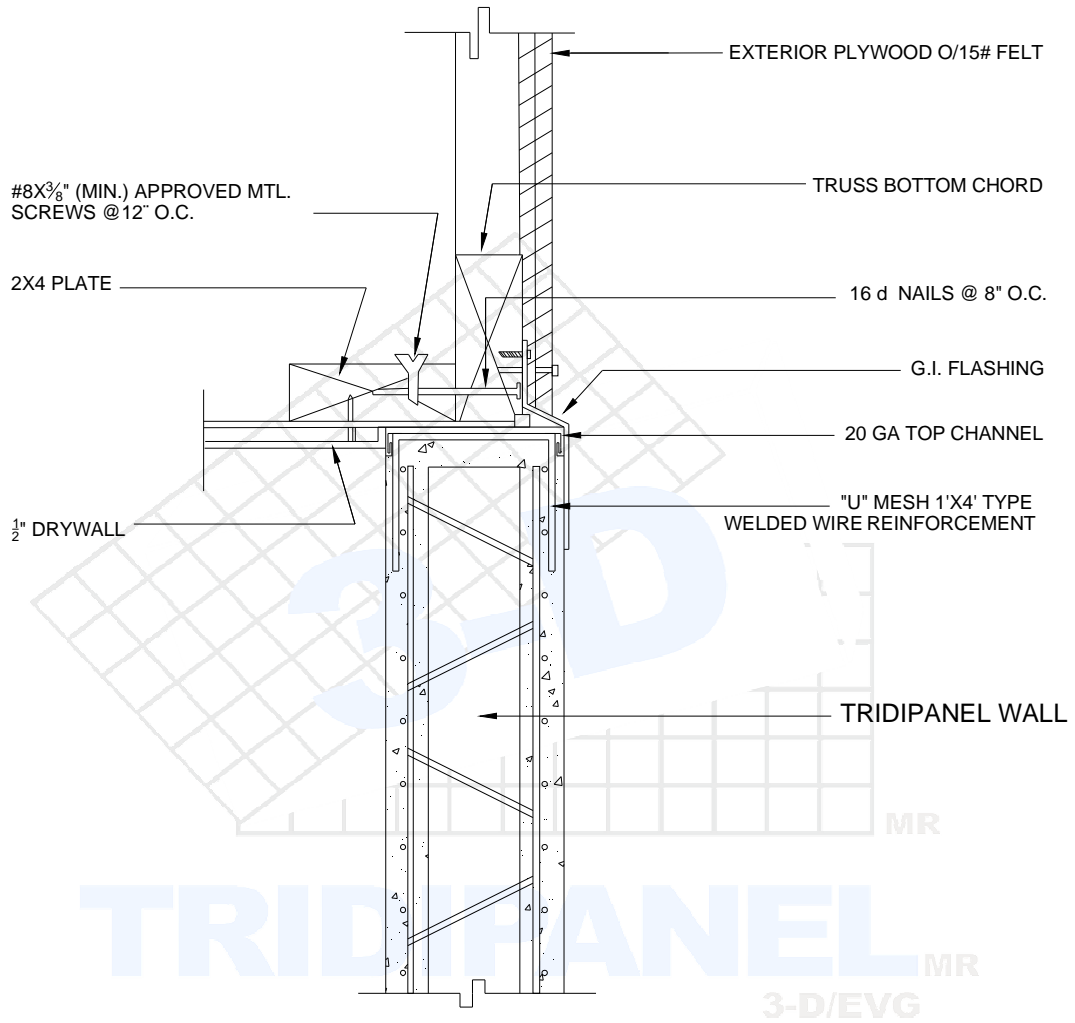
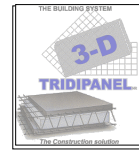


**TRIDIPANEL**<sub>MR</sub>  
3-D/EVG

## INTERIOR BEARING WALL TO FLOOR SYSTEM

Scale: None

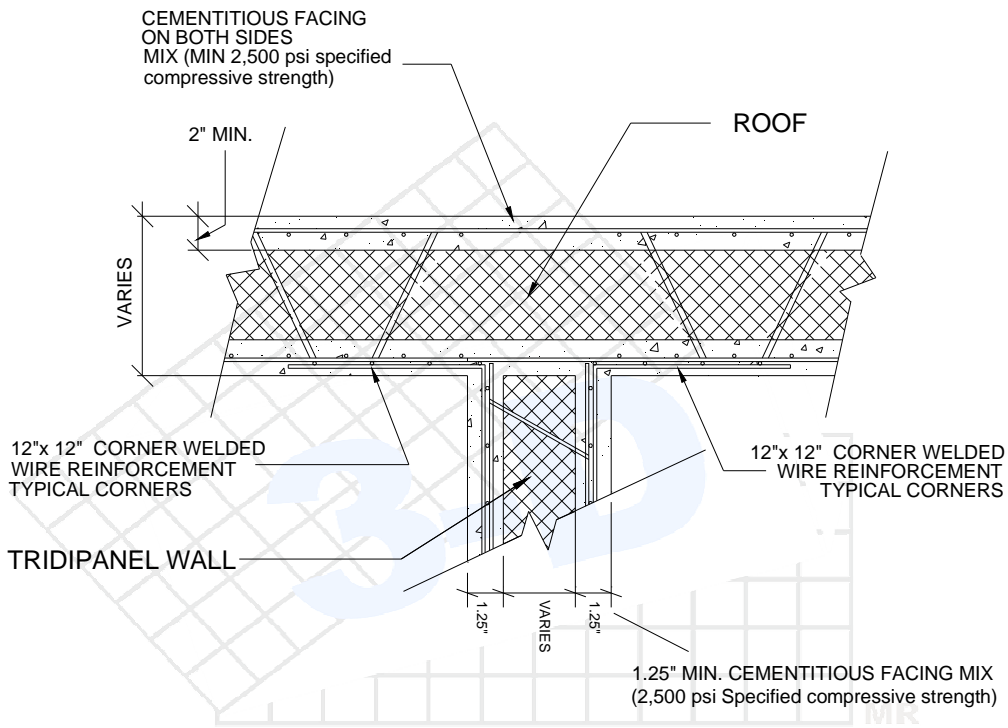
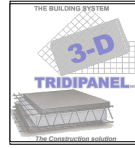
DETAIL
<b>36</b>
February 2013
Revision # 1



**TRUSS PARALLEL TO TRIDIPANEL**

Scale: None

DETAIL
<b>37</b>
February 2013
Revision # 1

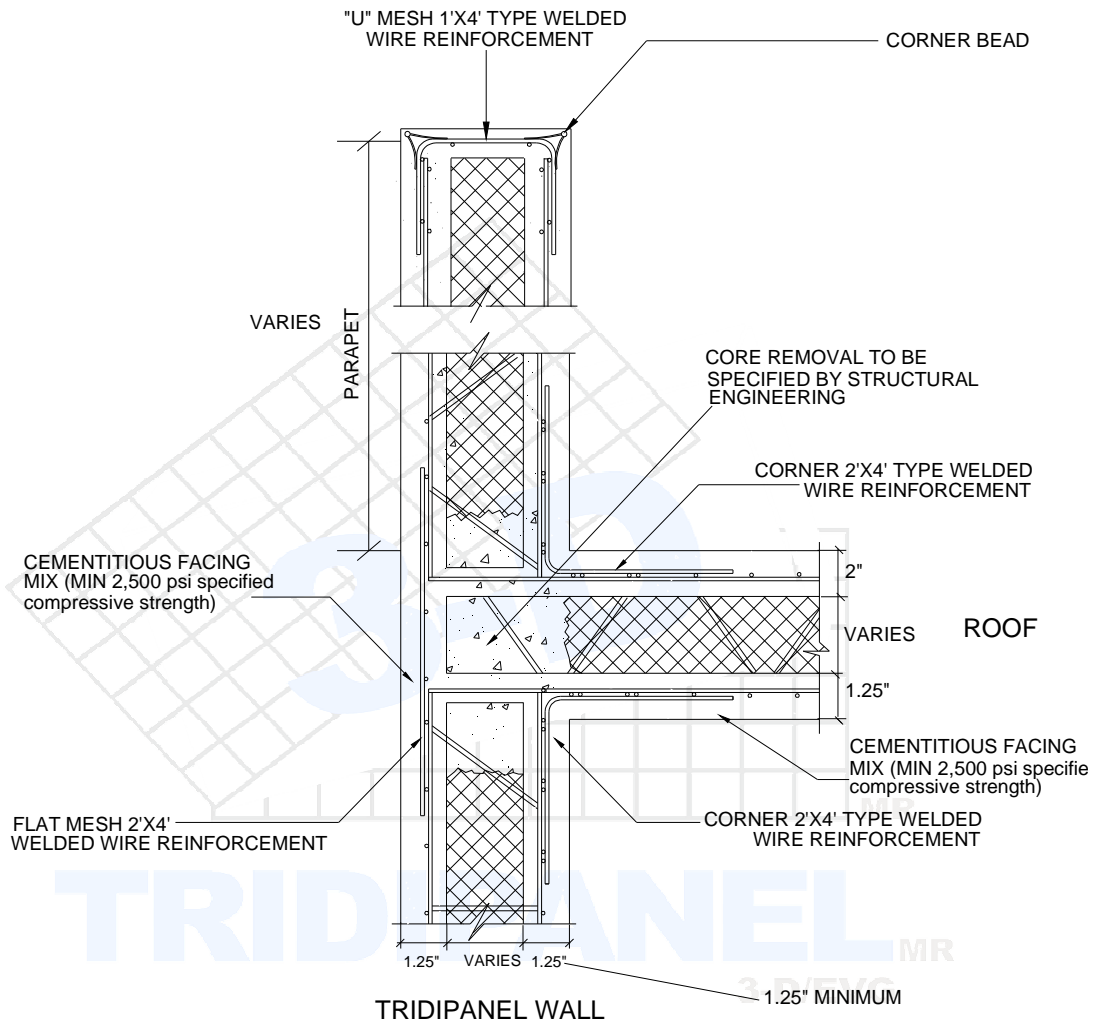
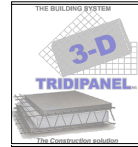


**TRIDIPANEL** MR  
3-D/EVG

**TYPICAL WALL TO FLAT ROOF CONNECTION**

Scale: None

DETAIL
<b>38</b>
February 2013
Revision # 1



## TYPICAL PARAPET

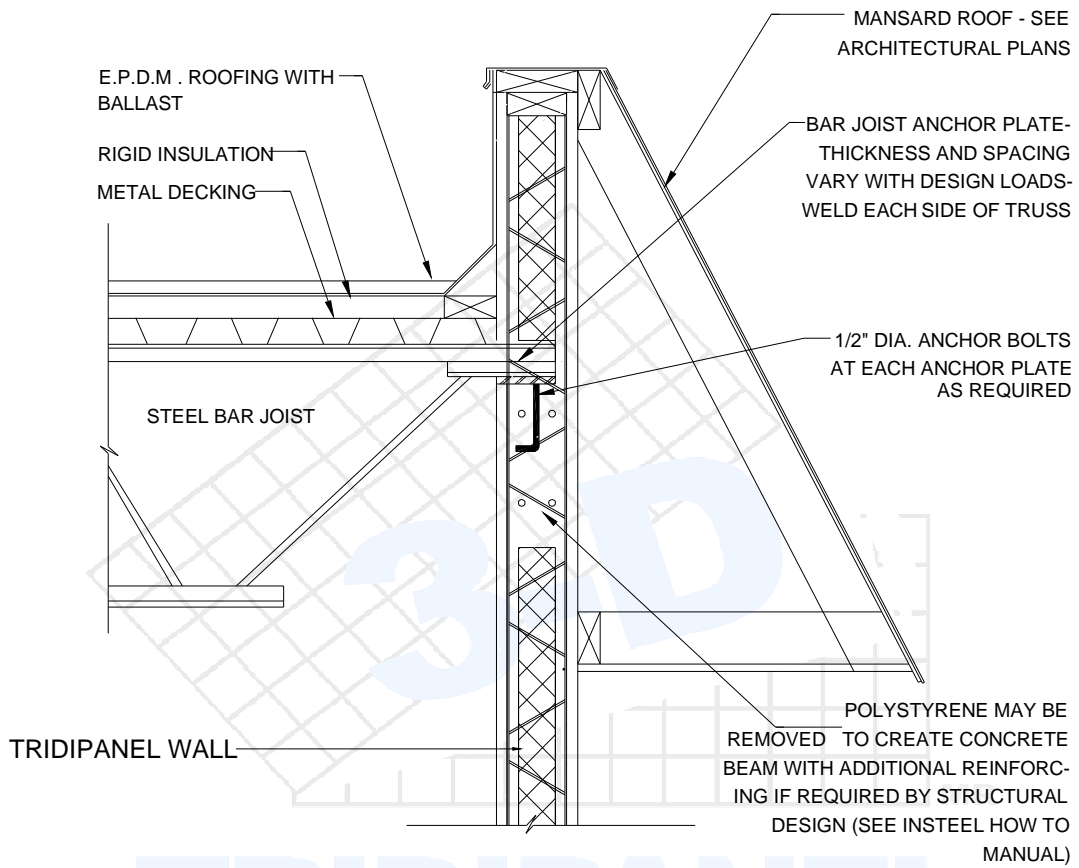
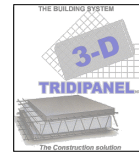
Scale: None

DETAIL

39

February 2013

Revision # 1



TRIDIPANEL MR  
3-D/EVG

## TYPICAL BAR JOIST ANCHOR

Scale: None

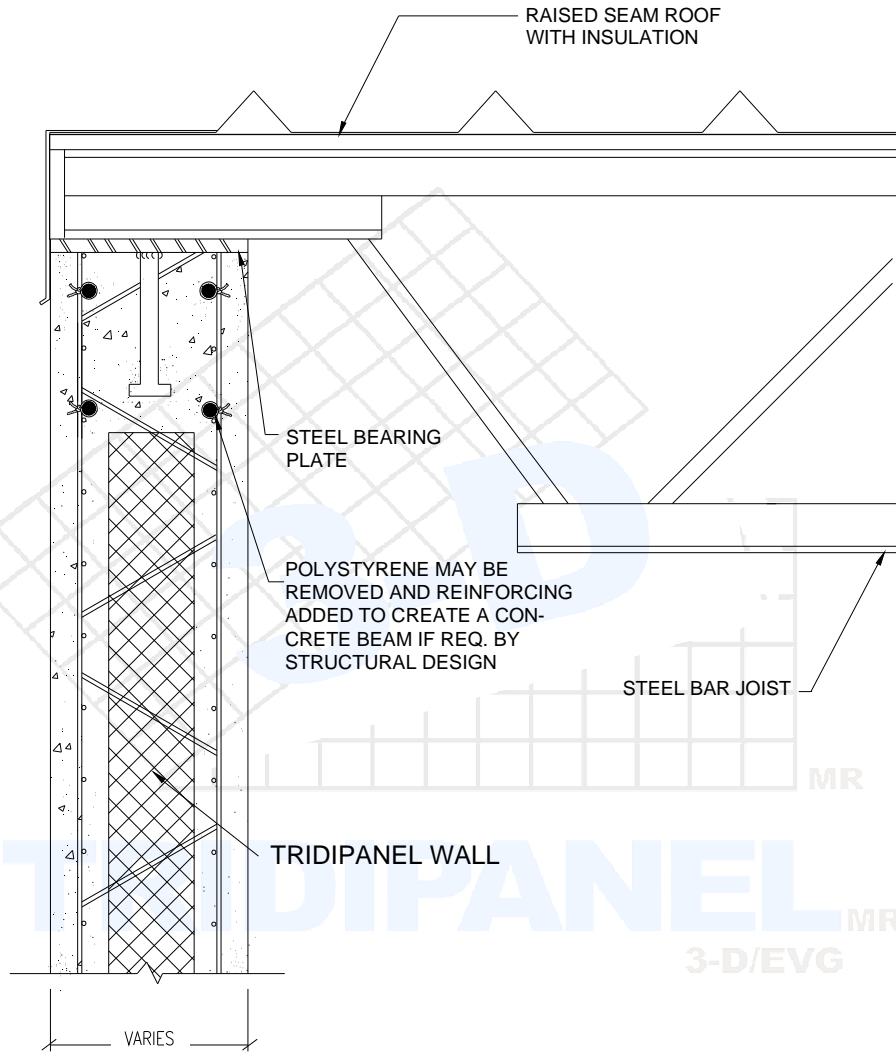
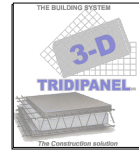
DETAIL

40

February 2013

Revision # 1

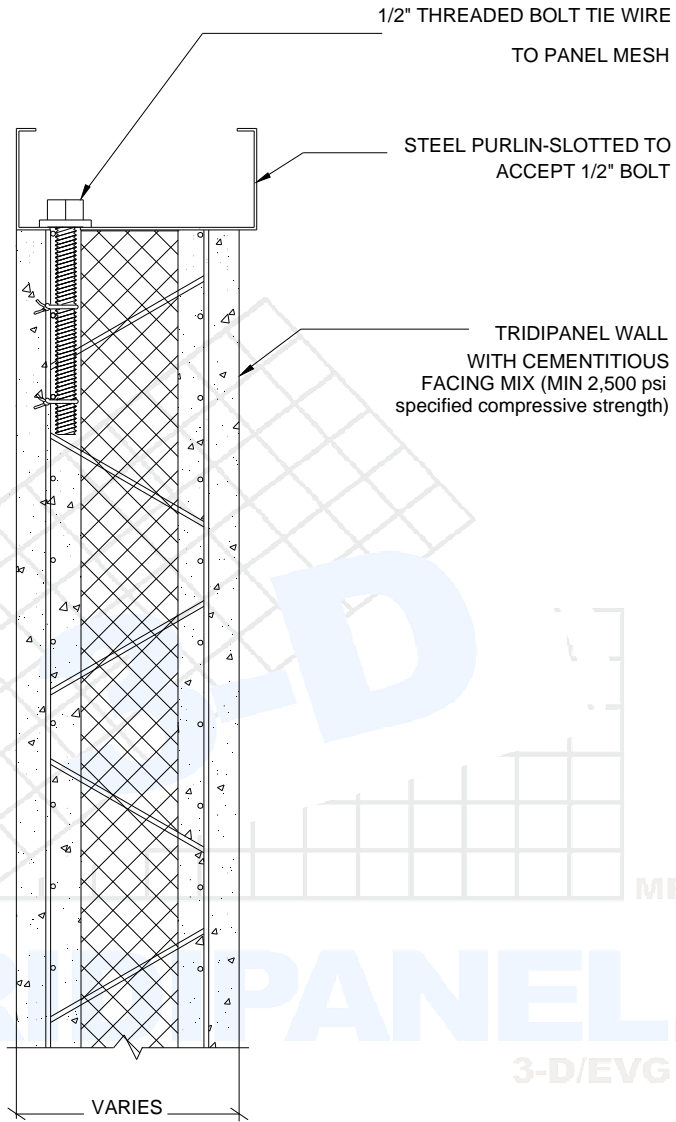
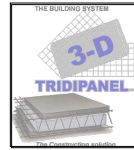




## METAL ROOF / TRIDIPANEL WALLS

Scale: None

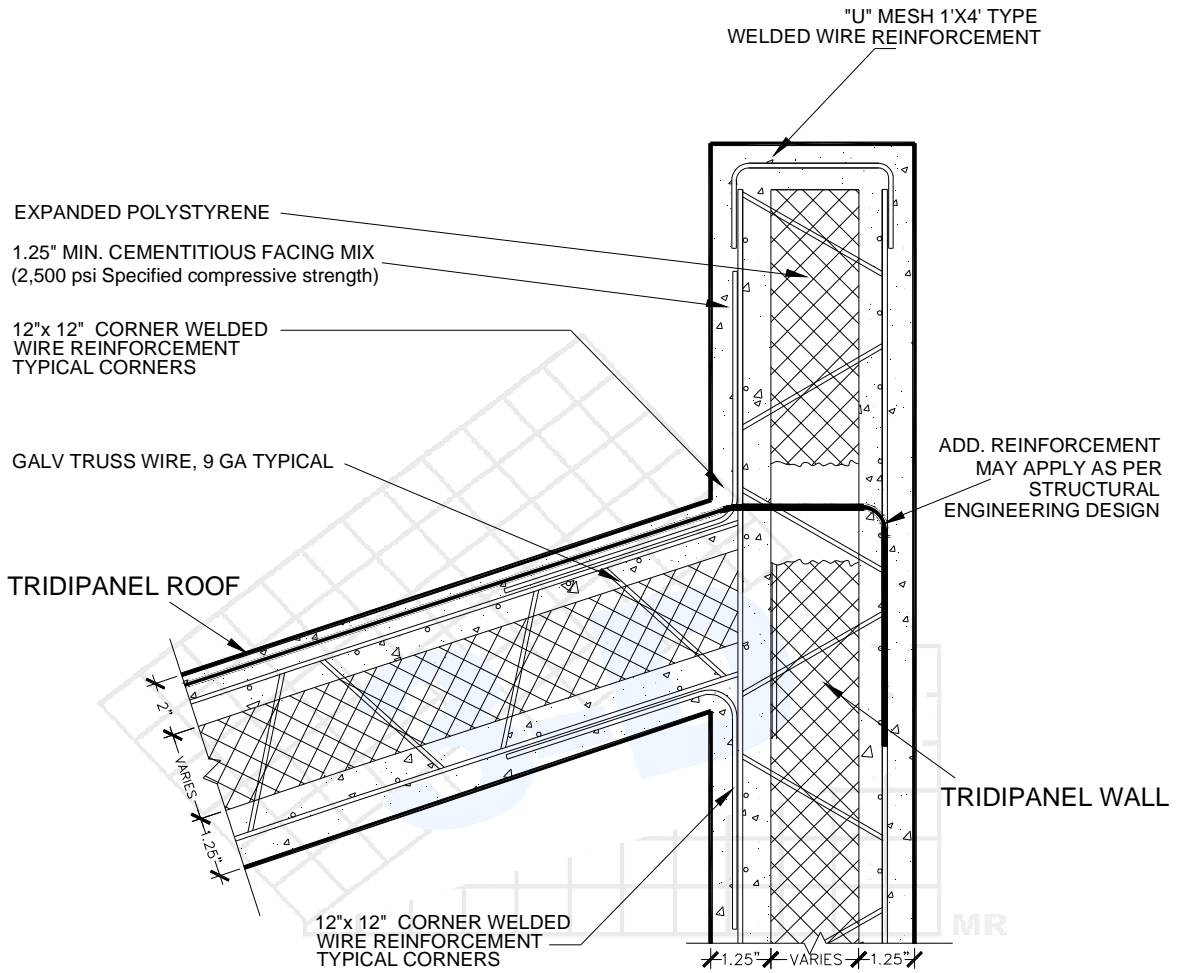
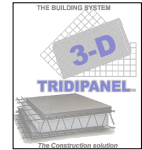
DETAIL
<b>41</b>
February 2013
Revision # 1



## METAL BUILDING PURLIN / WALL CONNECTION

Scale: None

DETAIL
<b>42</b>
February 2013
Revision # 1

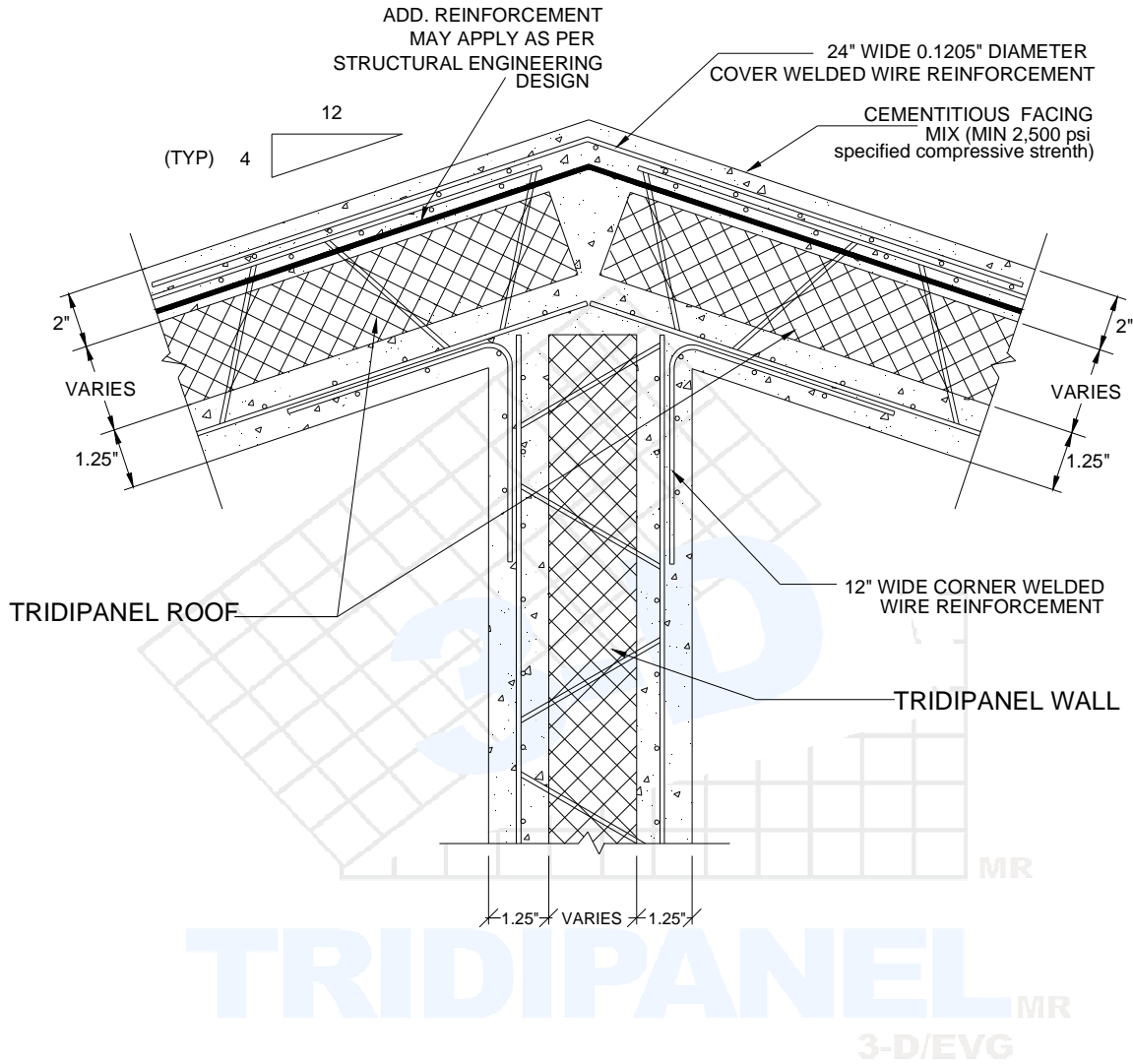


TRIDIPANEL<sub>MR</sub>  
3-D/EVG

**TYPICAL WALL AND SLOPED ROOF  
INTERSECTION WITH PARAPET**

Scale: None

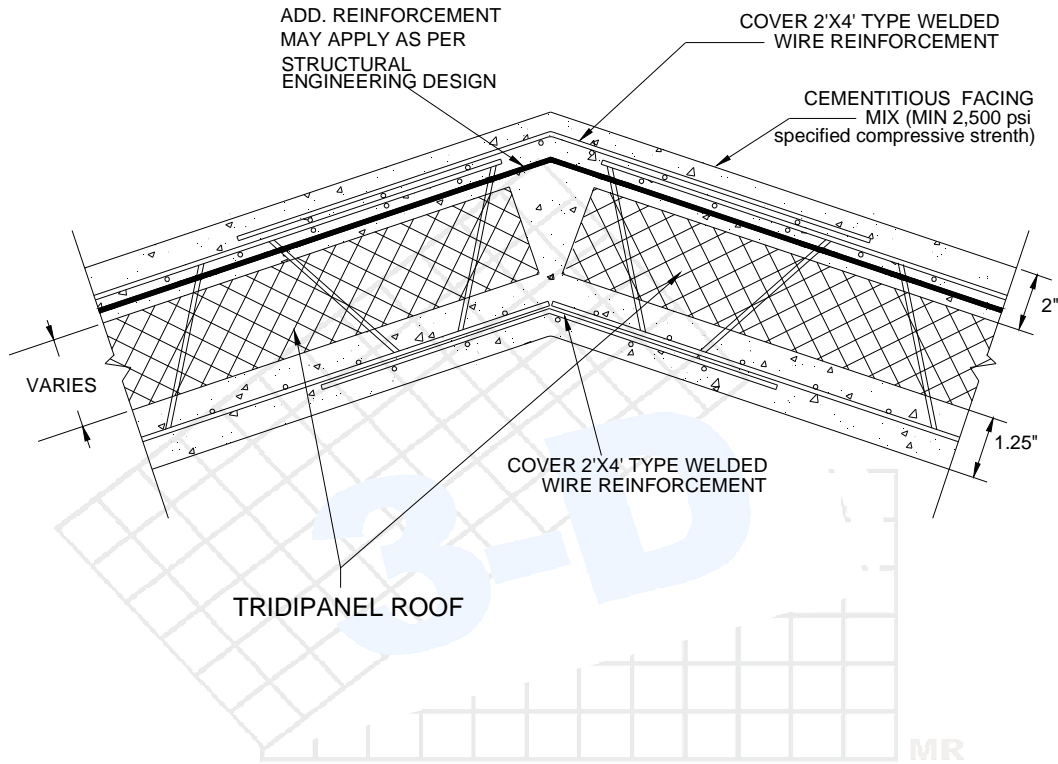
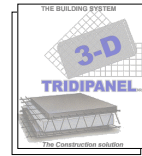
DETAIL
<b>43</b>
February 2013
Revision # 1



## TYPICAL WALL AT ROOF RIDGE CONNECTION

Scale: None

DETAIL
<b>44</b>
February 2013
Revision # 1

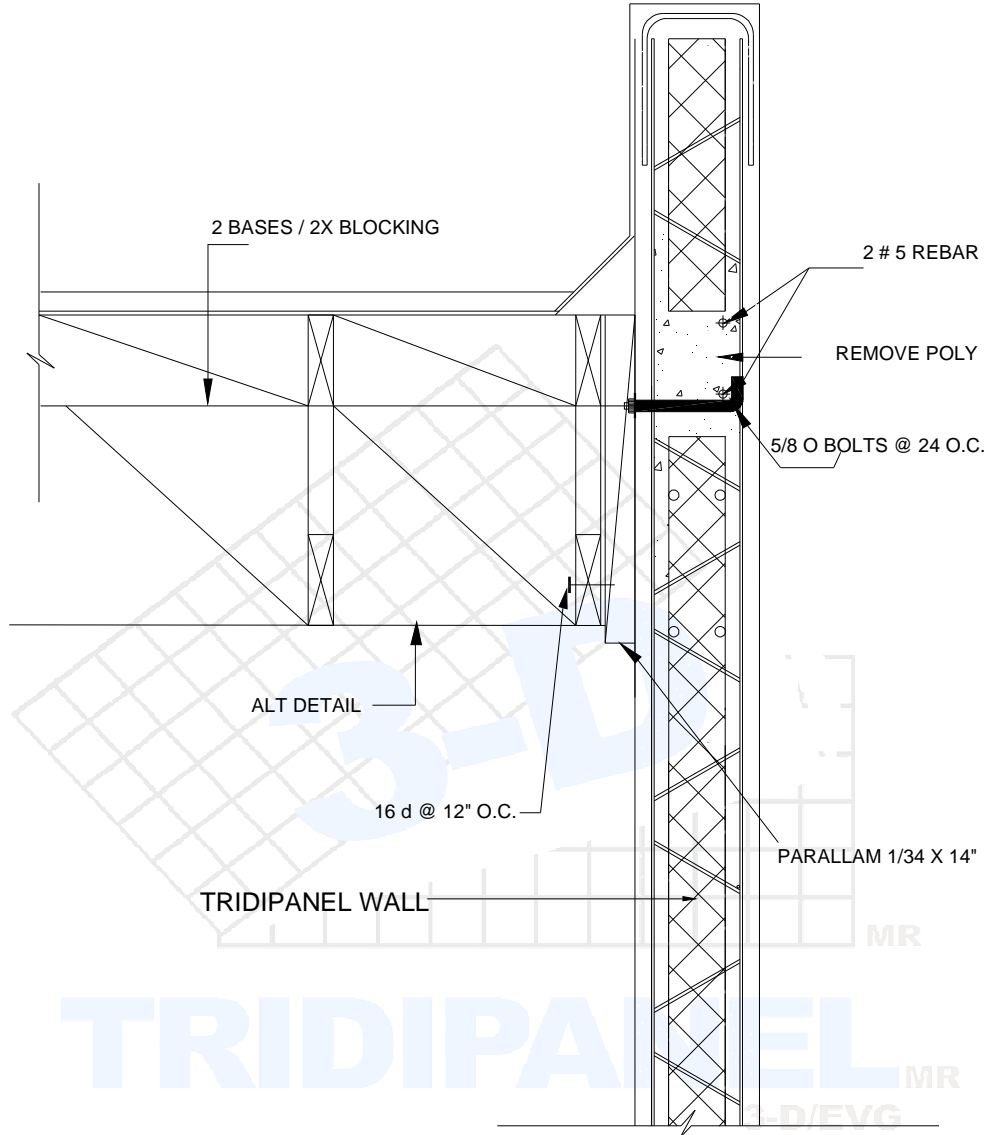
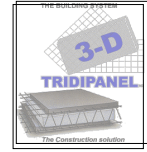


**TRIDIPANEL**<sub>MR</sub>  
3-D/EVG

### TYPICAL ROOF JOINT RIDGE CONNECTION

Scale: None

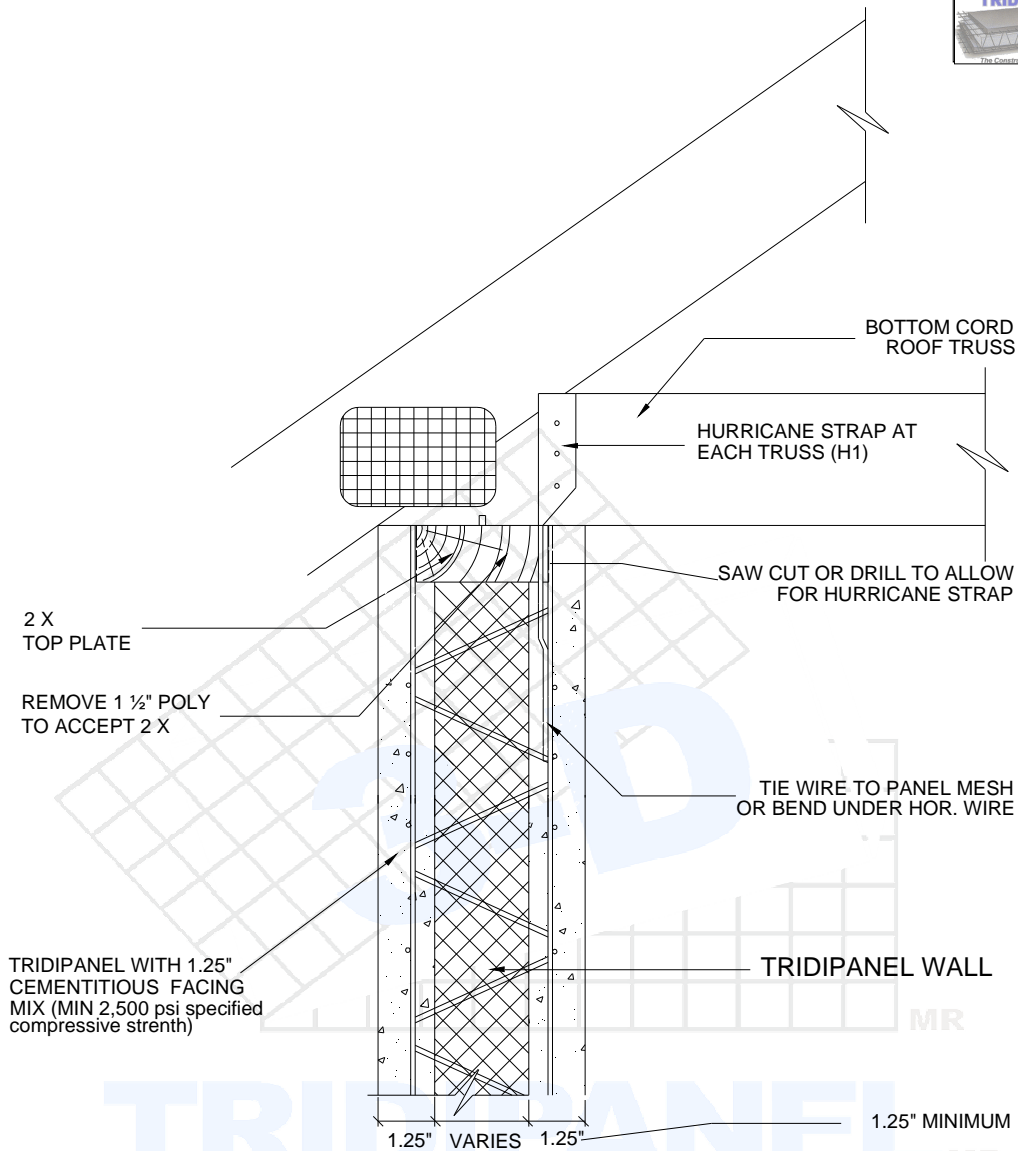
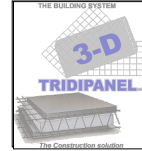
DETAIL
<b>45</b>
February 2013
Revision # 1



### TYPICAL DETAIL OF FLOOR / ROOF LEDGER CONNECTION

Scale: None

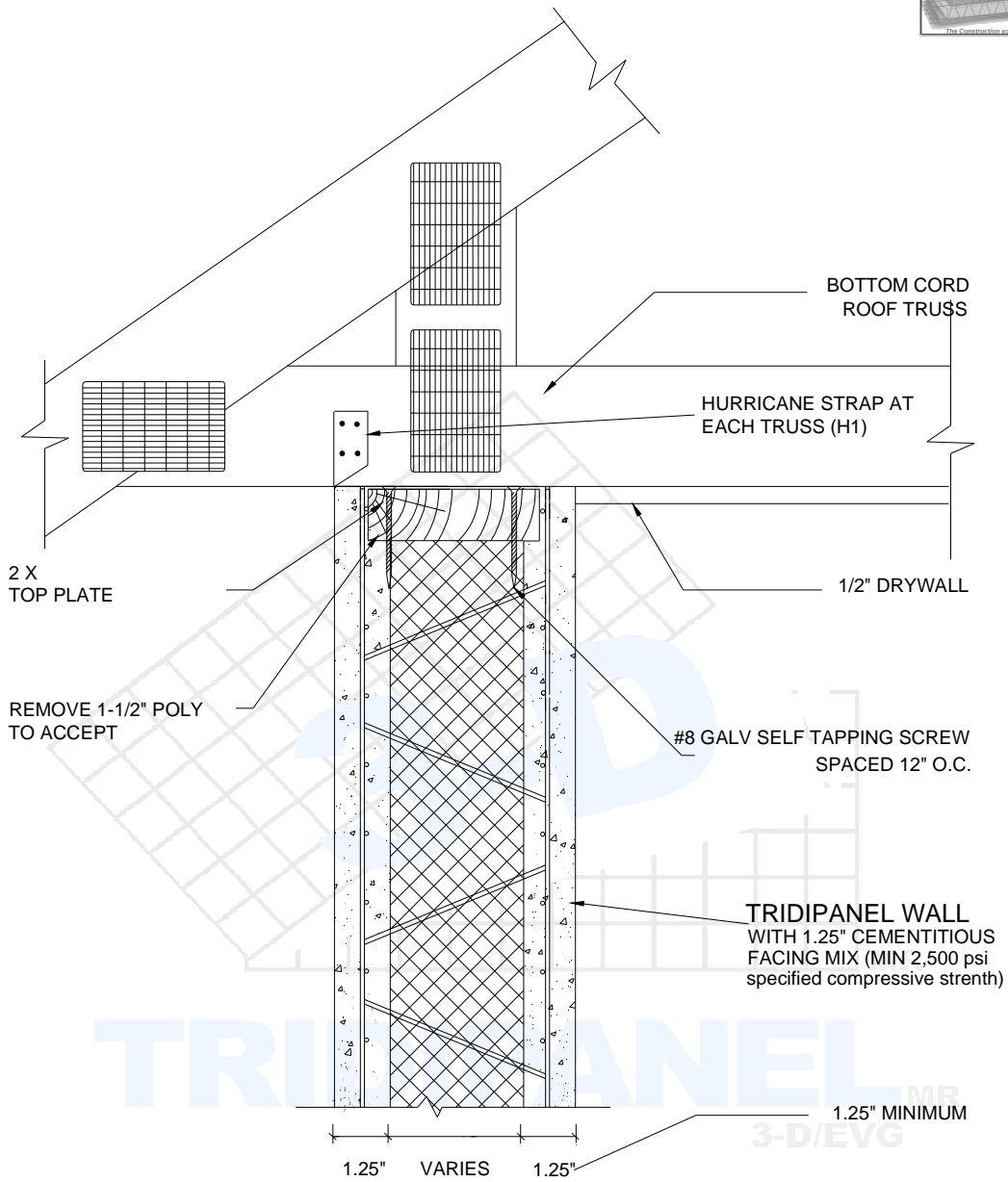
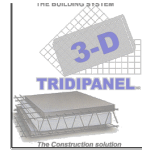
DETAIL
<b>46</b>
February 2013
Revision # 1



## TYPICAL DETAIL OF TRUSS CONNECTION WITH TRIDIPANEL WALL

Scale: None

DETAIL
<b>47</b>
February 2013
Revision # 1

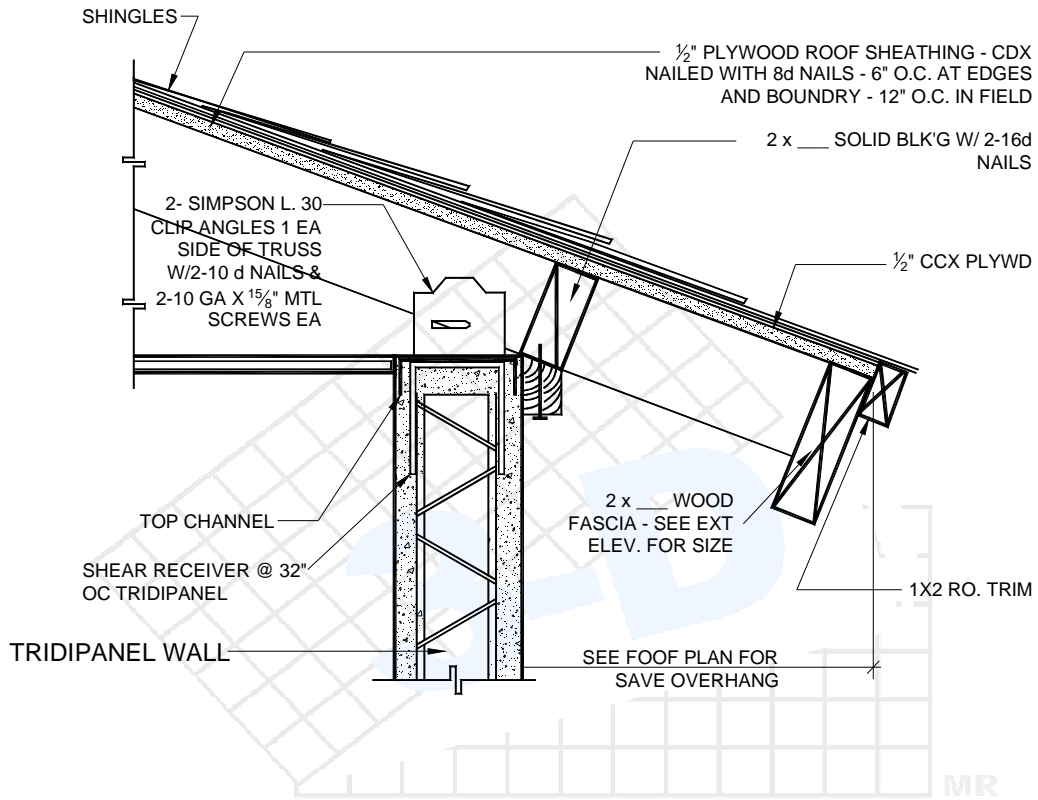
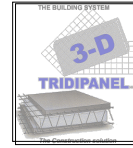


### TYPICAL DETAIL OF CONNECTION WITH TRIDIPANEL WALL

Scale: None

DETAIL
<b>48</b>
February 2013
Revision # 1



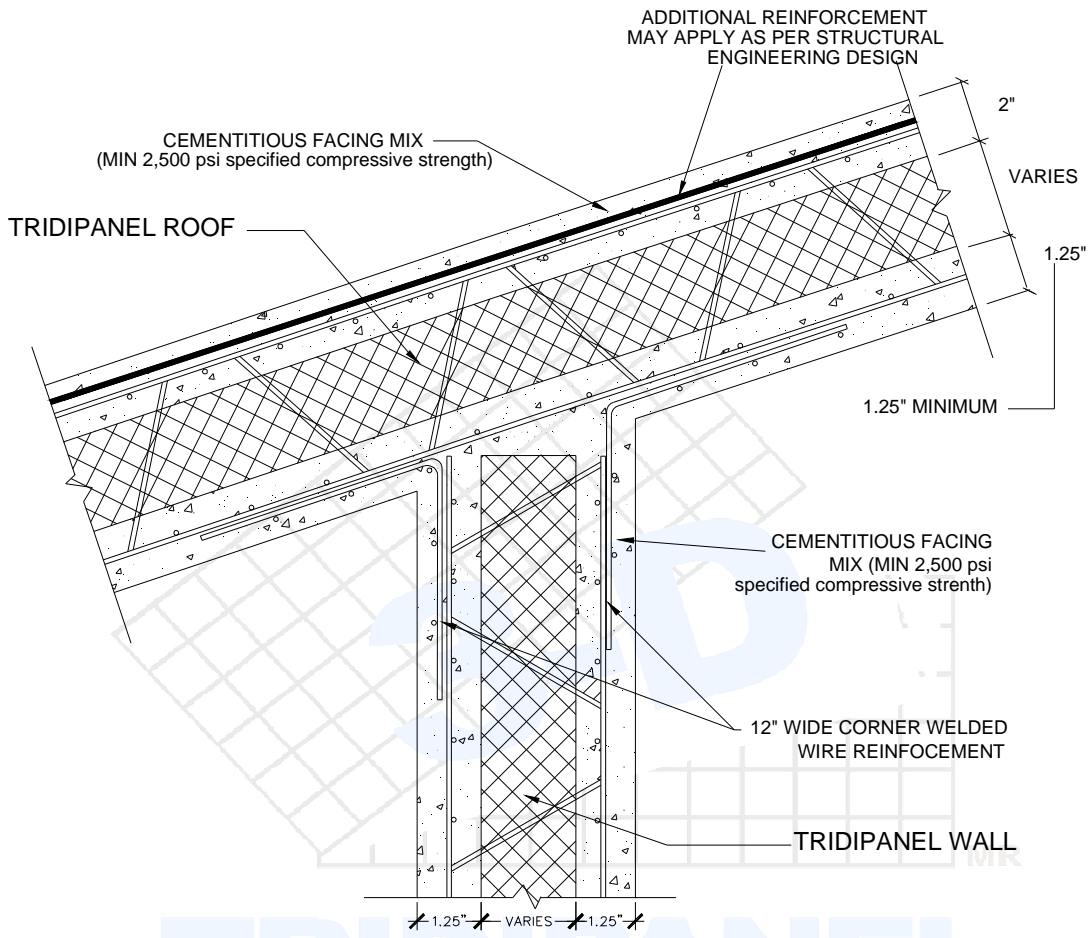
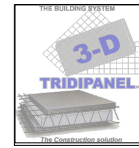


TRIDIPANEL<sub>MR</sub>  
3-D/EVG

## ROOF TRUSS & TOP CHANNEL CONNECTION

Scale: None

DETAIL
<b>49</b>
February 2013
Revision # 1

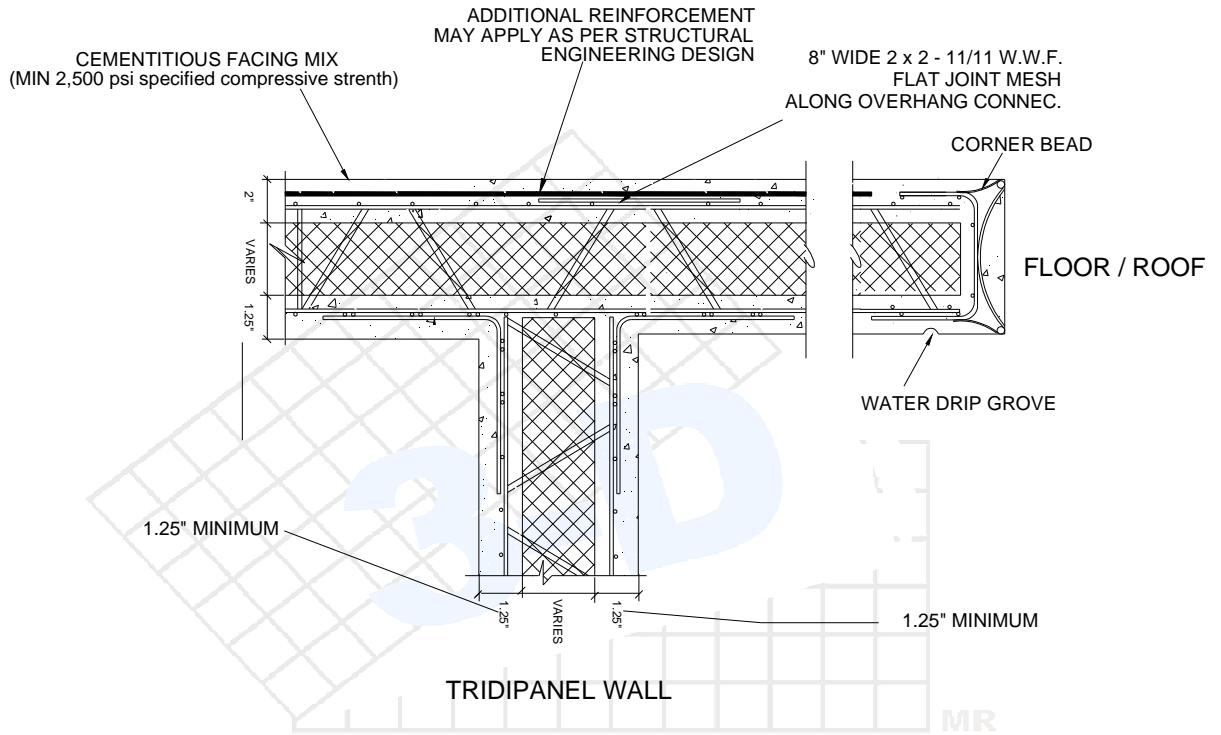


TRIDIPANEL<sup>MR</sup>  
3-D/EVG

### TYPICAL DETAIL OF WALL TO SLOPED ROOF CONNECTION

Scale: None

DETAIL
<b>50</b>
February 2013
Revision # 1

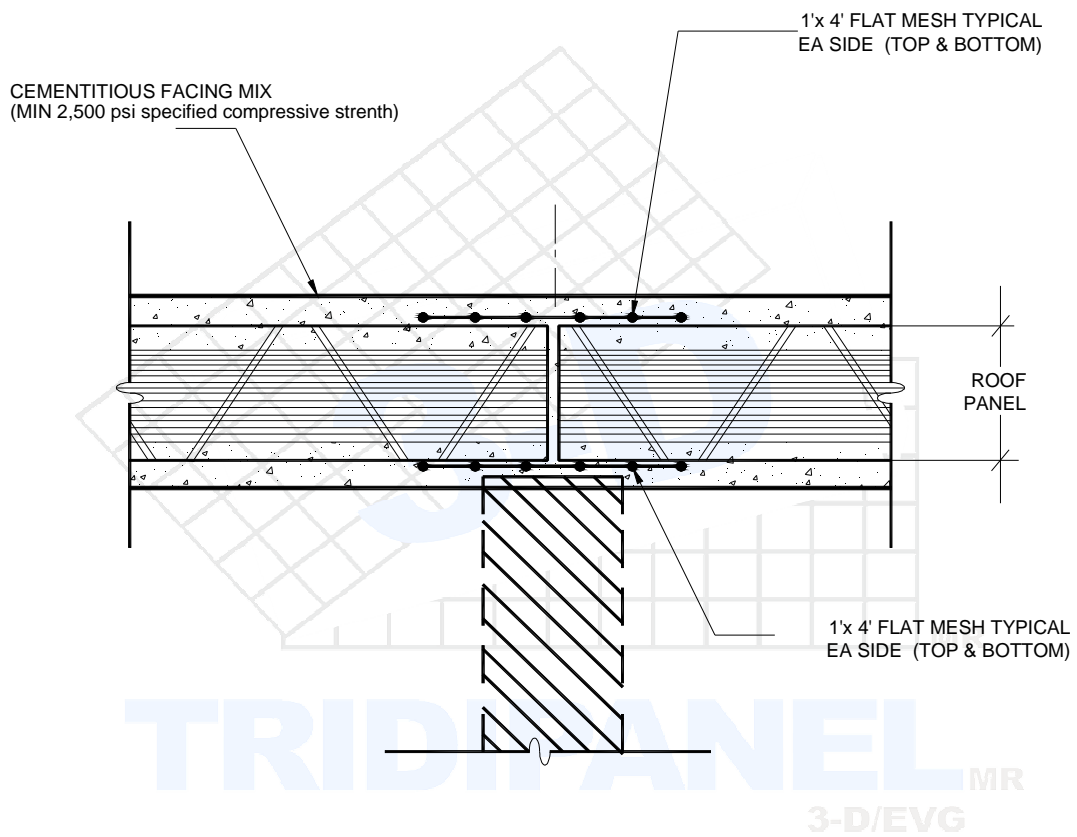
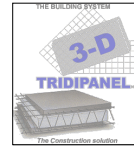


TRIDIPANEL<sub>MR</sub>  
3-D/EVG

**OVERHANG CONNECTION**

Scale: None

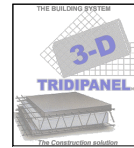
DETAIL
<b>51</b>
February 2013
Revision # 1



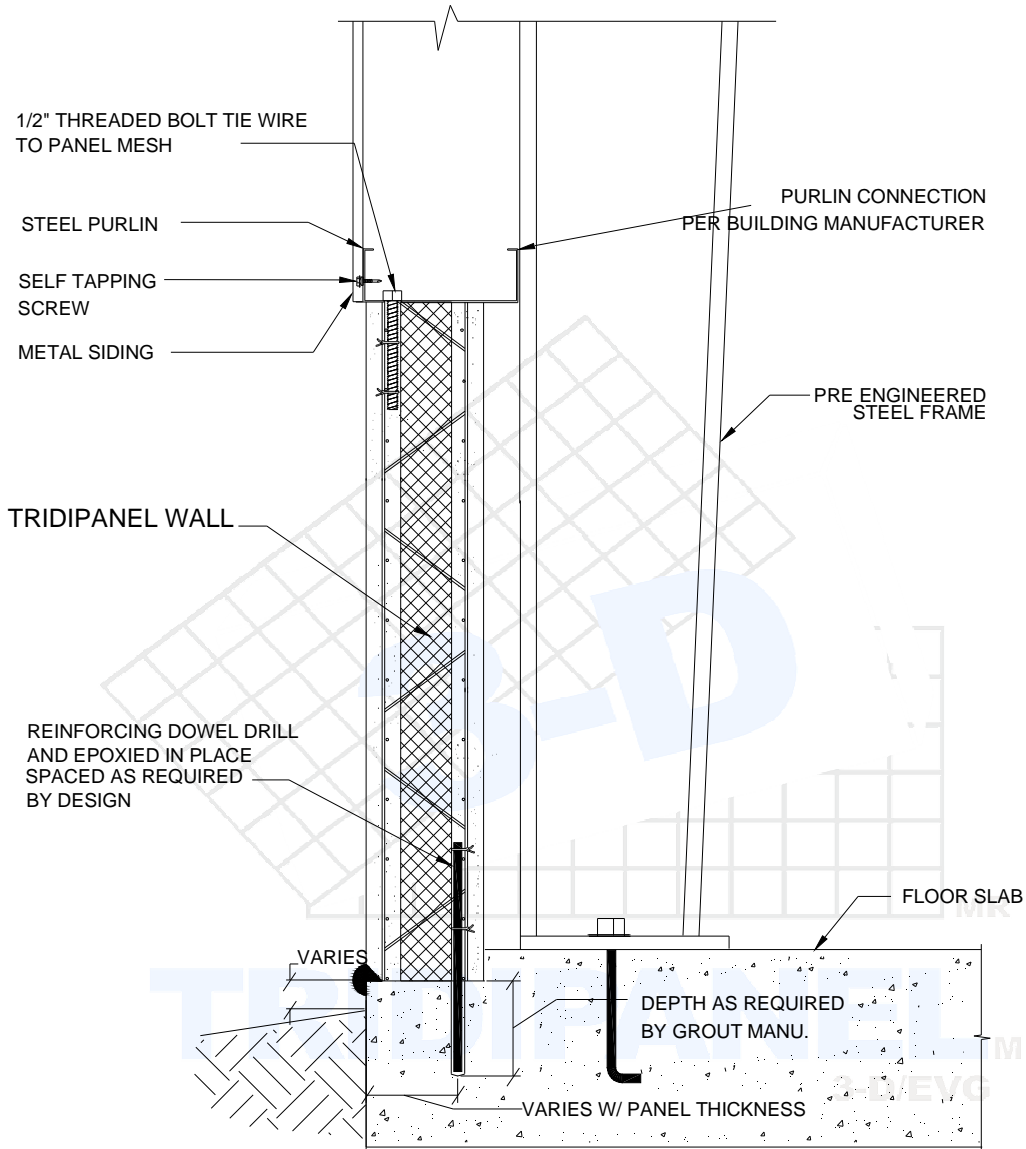
**TYPICAL ROOF JOINT CONN.  
(JOINT PARALLEL TO SPAN)**

Scale: None

DETAIL
<b>52</b>
February 2013
Revision # 1



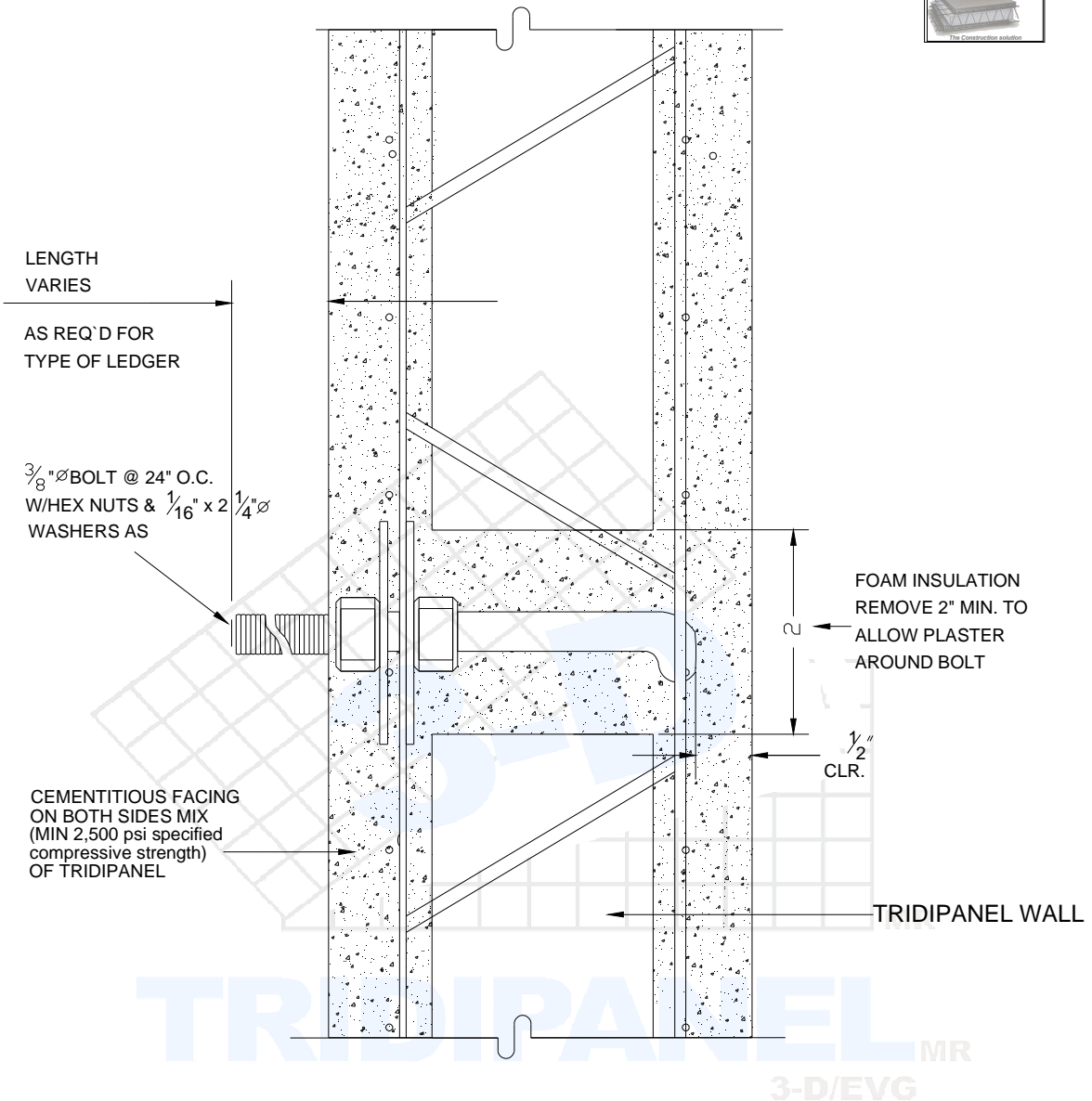
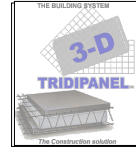
www.tridipanel.com.mx



### TYPICAL WALL SECTION

Scale: None

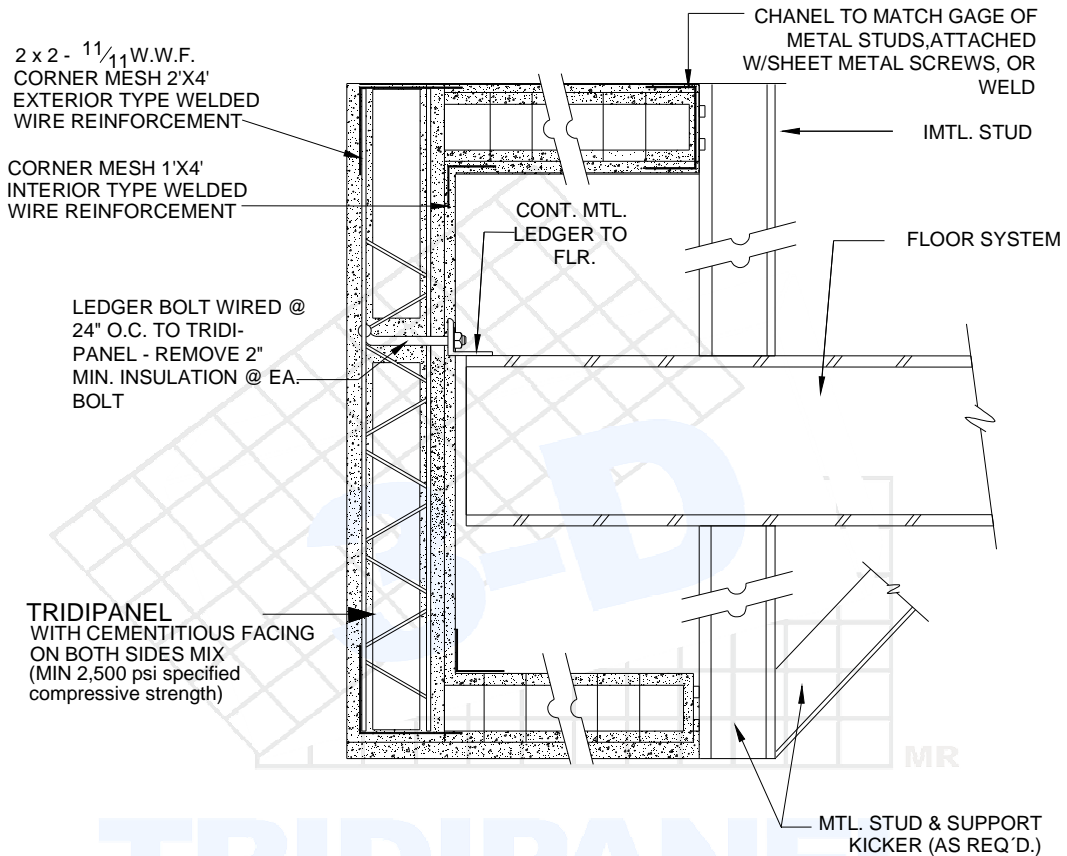
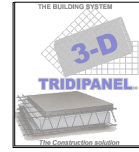
DETAIL
<b>53</b>
February 2013
Revision # 1



## LEDGER BOLT CONN. TO TRIDIPANEL WALL

Scale: None

DETAIL
<b>54</b>
February 2013
Revision # 1



## TRIDIPANEL SPANDREL WITH FLOOR CONNECTION

Scale: None

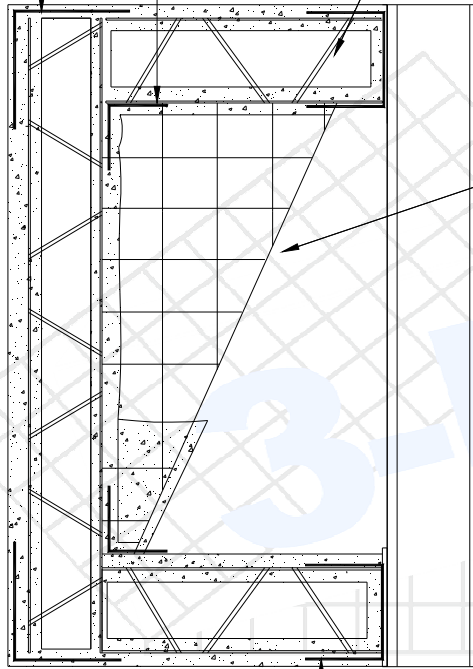
DETAIL
<b>55</b>
February 2013
Revision # 1



www.tridipanel.com.mx

2 x 2 - 1 1/4 W.W.F.  
CORNER MESH  
2' x 4' @ OUTSIDE  
AND 1' x 4' INSIDE

TRIDIPANEL  
WITH CEMENTITIOUS FACING  
ON BOTH SIDES MIX  
(MIN 2,500 psi specified  
compressive strength)



TRIDIPANEL GUSSET  
6" MIN. INSIDE EACH  
END

FLOOR  
MEMBER

MTL. STUD WELDED OR  
SHEET MTL. SCREW TO  
FLR. MEMBER & TO TOP  
CHANNELS OF TRIDI-  
PANEL SPANDREL

TOP CHANEL TO MATCH  
GAGE OF METAL STUDS

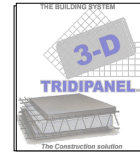
TRIDIPANEL MR  
3-D/EVG

## TRIDIPANEL SPANDREL W / MTL. STUD BACKING

Scale: None

DETAIL
<b>56</b>
February 2013
Revision # 1





ATTACH 120° PVC ELBOW TO PVC ELECTRICAL RACEWAY WHERE OCCURS. REMOVE I. P. INSULATION AS REQUIRED.

LIGHT GAUGE "C" CHANNEL WALL BRACING @48" O.C. TO MTL TRUSS TOP CHORD. REMOVE FLANGE & BEND WEB FOR FASTENING

MTL "C" CHANNEL OR STUD LEDGER W/2-10X5/8 MTL SCRWS INTO EA. RECEIVER

FURRING CHANNEL @ 16" O.C.

MODIFIED SHEAR RECEIVERS @ 32" O.C. W/HARTCO CLIPS INTO TRIDIPANEL

TRIDIPANEL W/ WITH CEMENTITIOUS FAC ON BOTH SIDES (MIN 2,500 psi spec compressive strer)

12" LAP-MESH (FLAT) TYPICAL EA. FACE

GYP PLASTER

CEM. PLSTR.

## I.P GABLE TO I.P. WALL

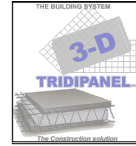
Scale: None

DETAIL

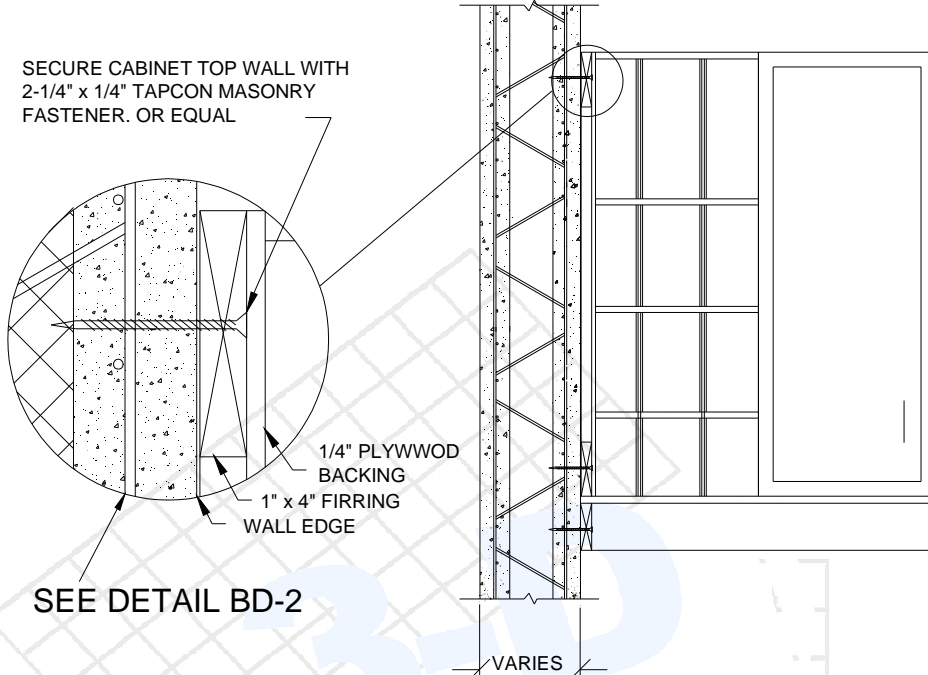
57

February 2013

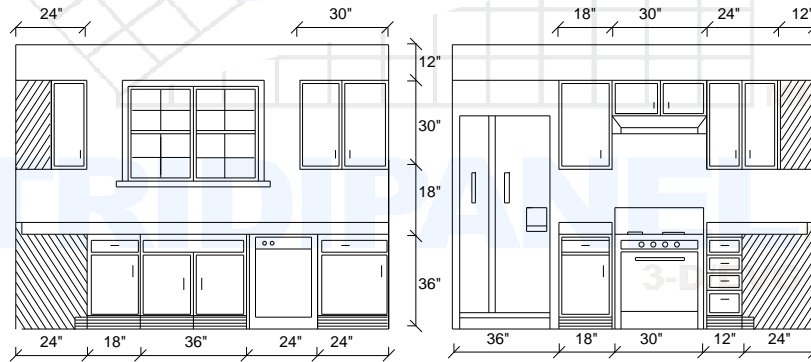
Revision # 1



TRIDIPANEL WALL



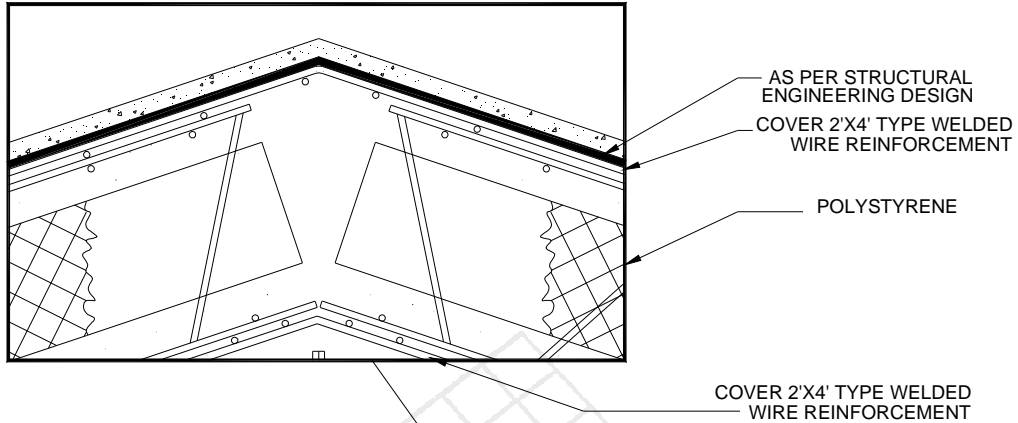
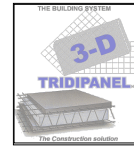
SEE DETAIL BD-2



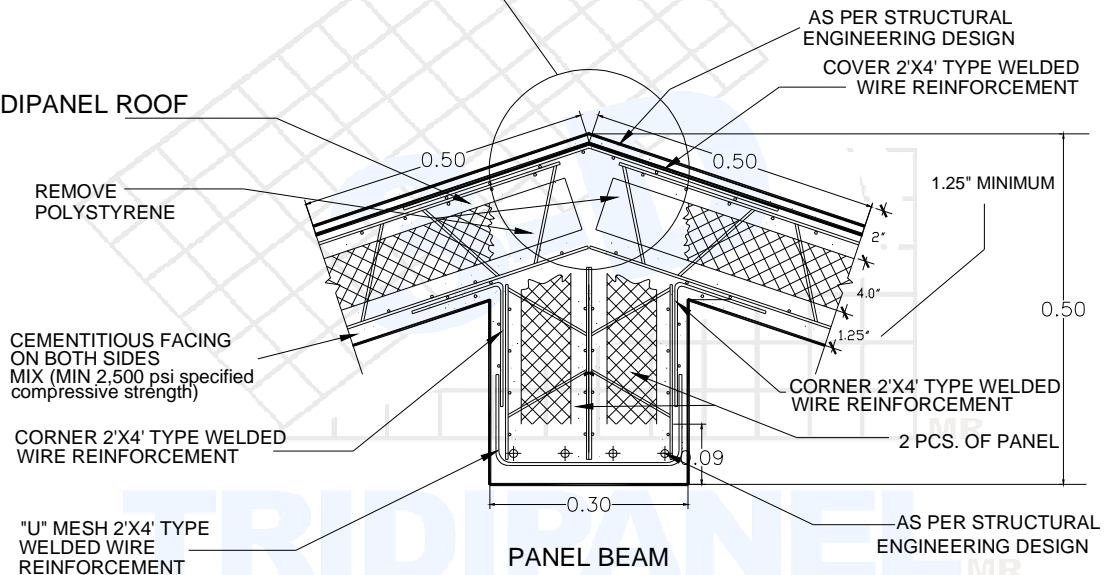
TYPICAL CABINET CONNECTION

Scale: None

DETAIL
<b>58</b>
February 2013
Revision # 1



TRIDIPANEL ROOF

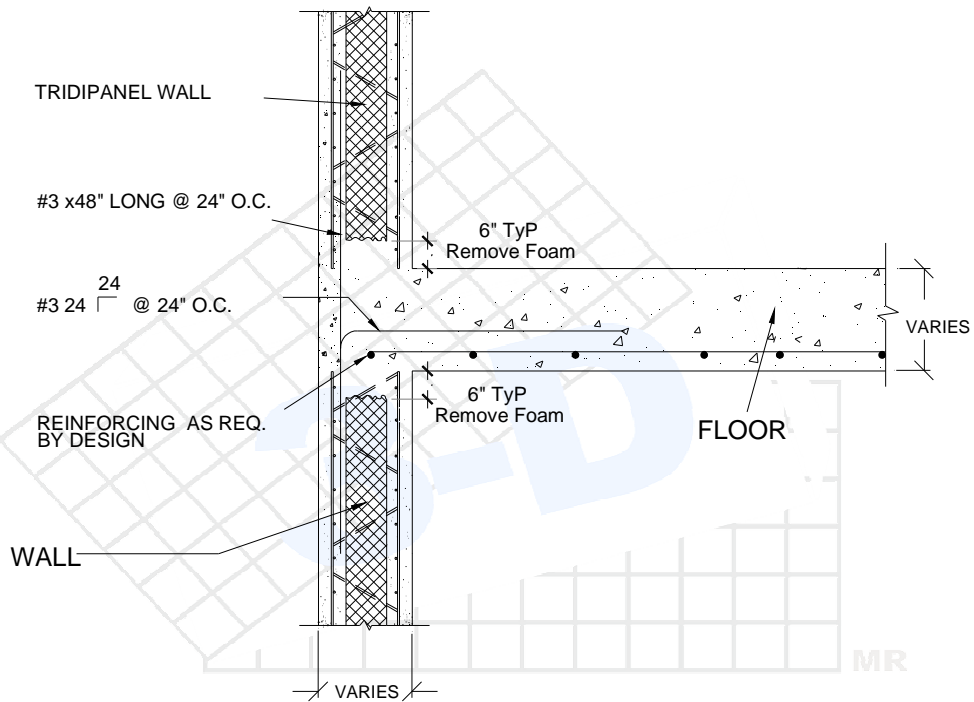
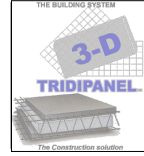


\* EXAMPLE ONLY, FINAL REINFORCING SHOULD BE SPECIFIED BY STRUCTURAL ENGINEERING

## PANEL ROOF WITH PANEL BEAM CONNECTION

Scale: None

DETAIL
59
February 2013
Revision # 1

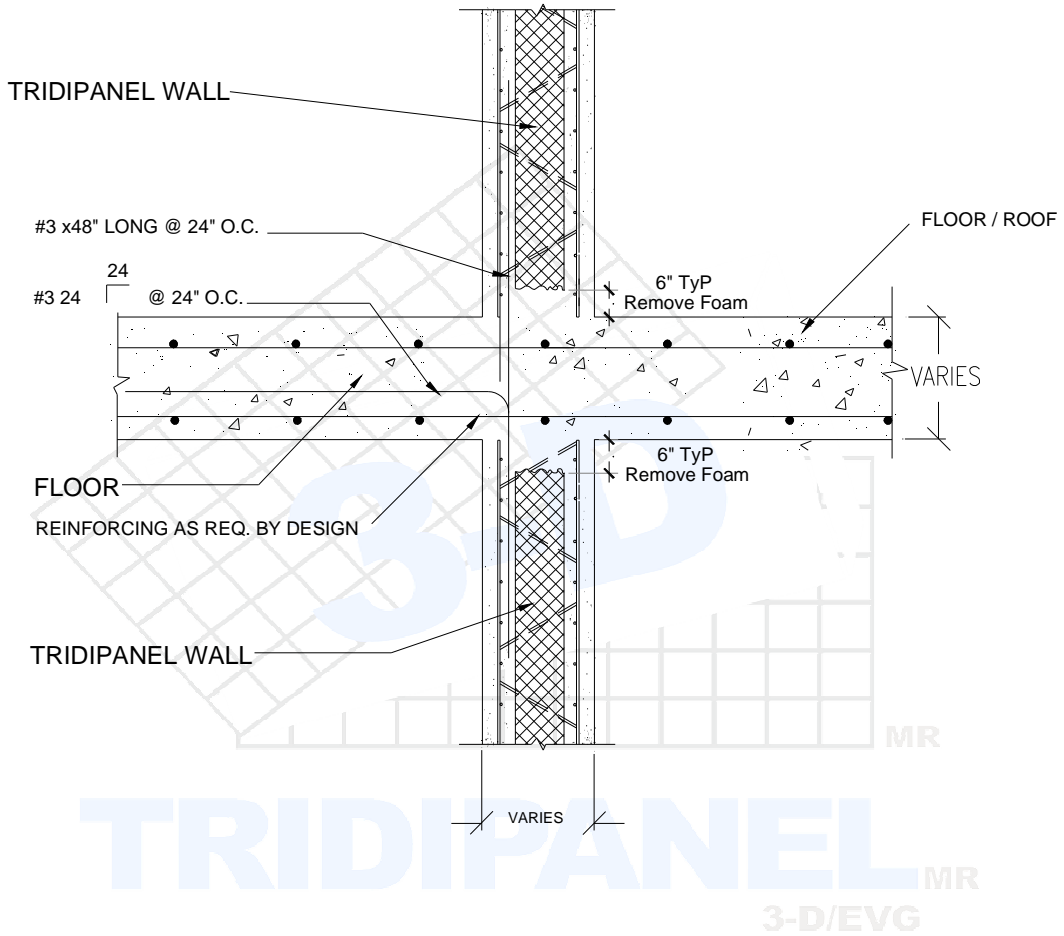
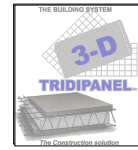


**TRIDIPANEL**<sub>MR</sub>  
3-D/EVG

**TYPICAL EXTERIOR TRIDIPANEL WALL /  
CAST-IN-PLACE FLOOR CONN.**

Scale: None

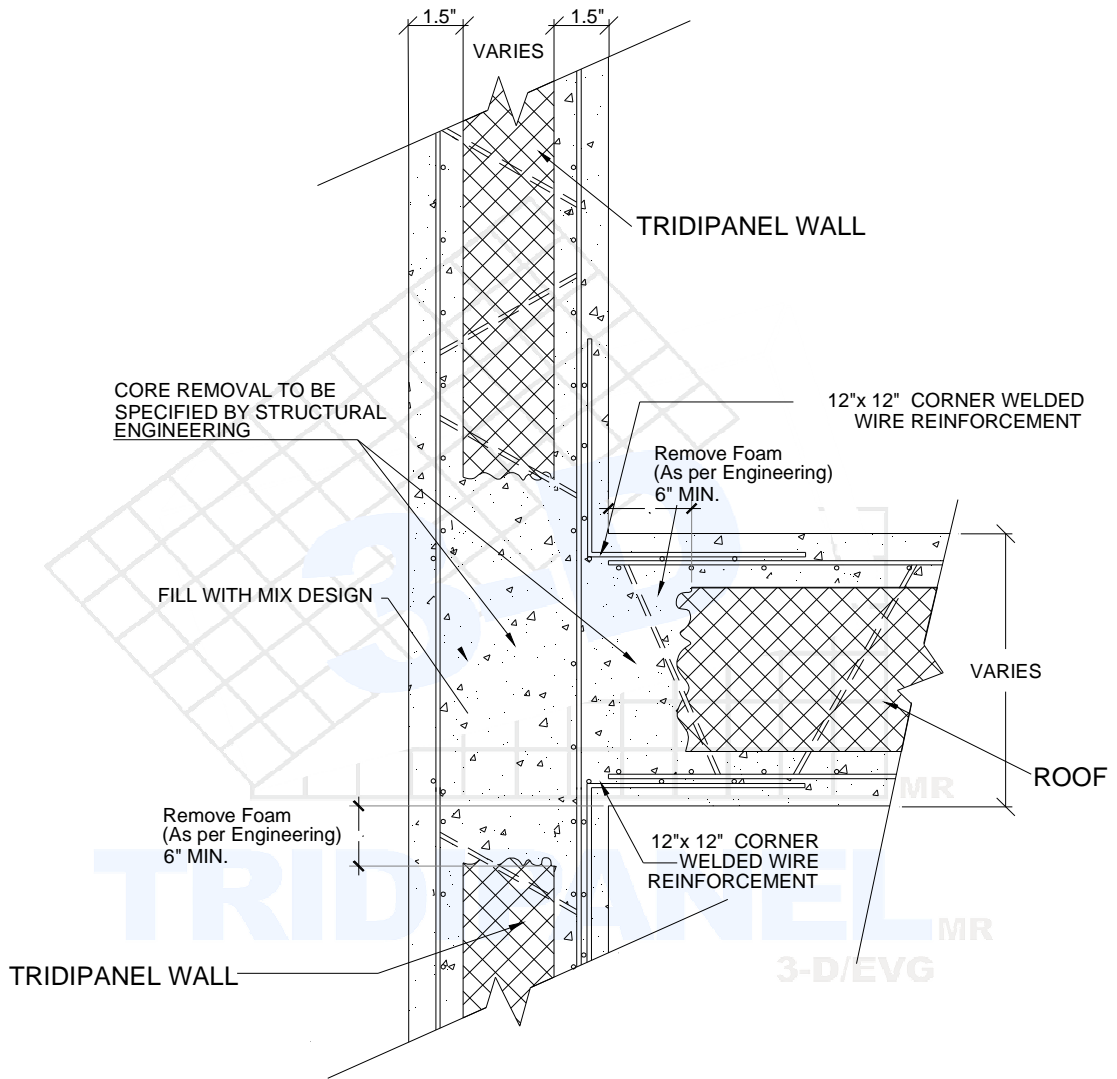
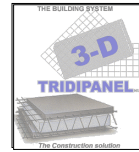
DETAIL
<b>60</b>
February 2013
Revision # 1



### TYPICAL INTERIOR TRIDIPANEL WALL / CAST-IN-PLACE FLOOR CONN.

Scale: None

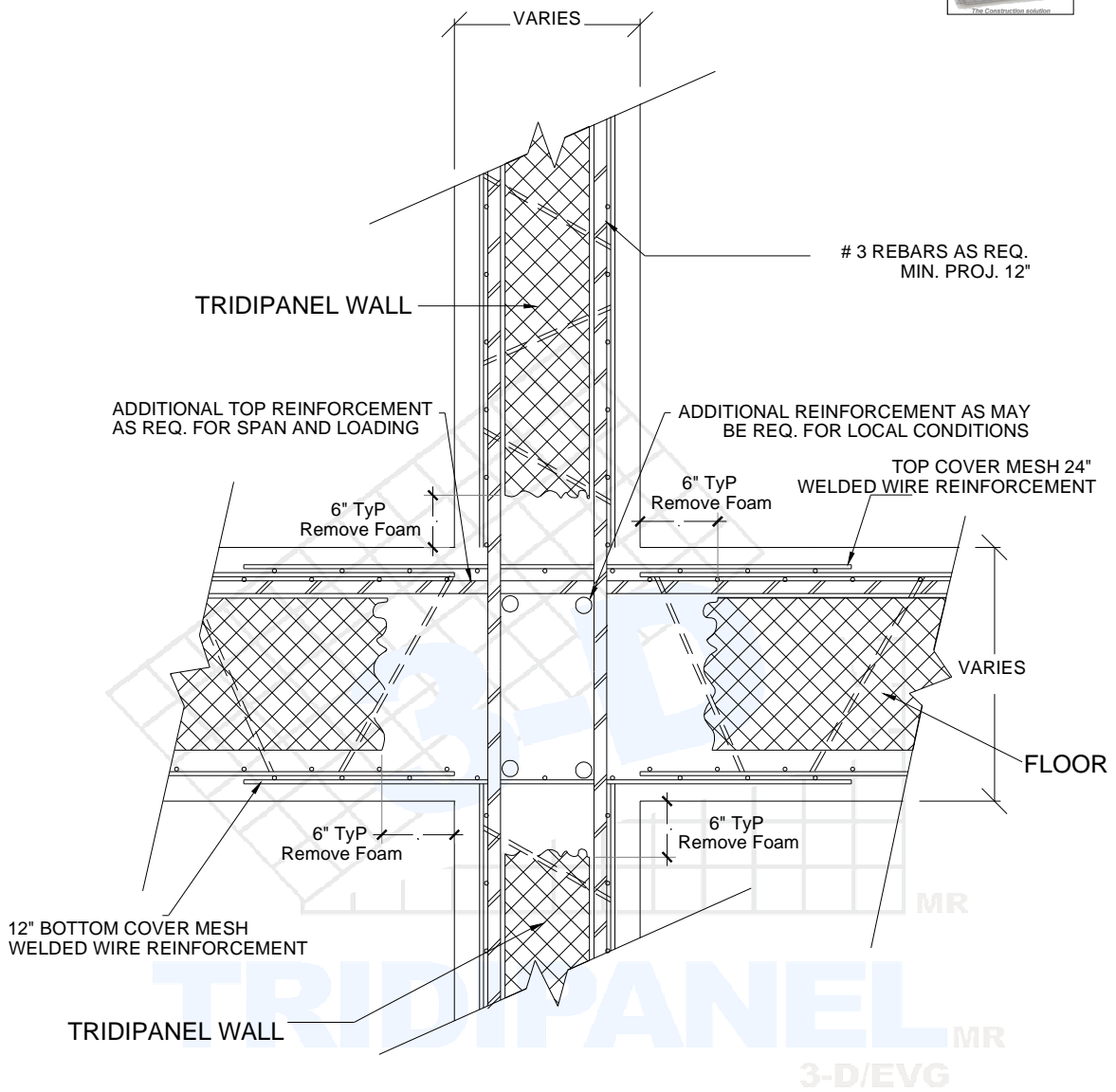
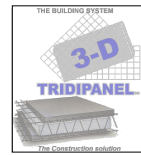
DETAIL
<b>61</b>
February 2013
Revision # 1



### TYPICAL WALL TO ROOF CONNECTION

Scale: None

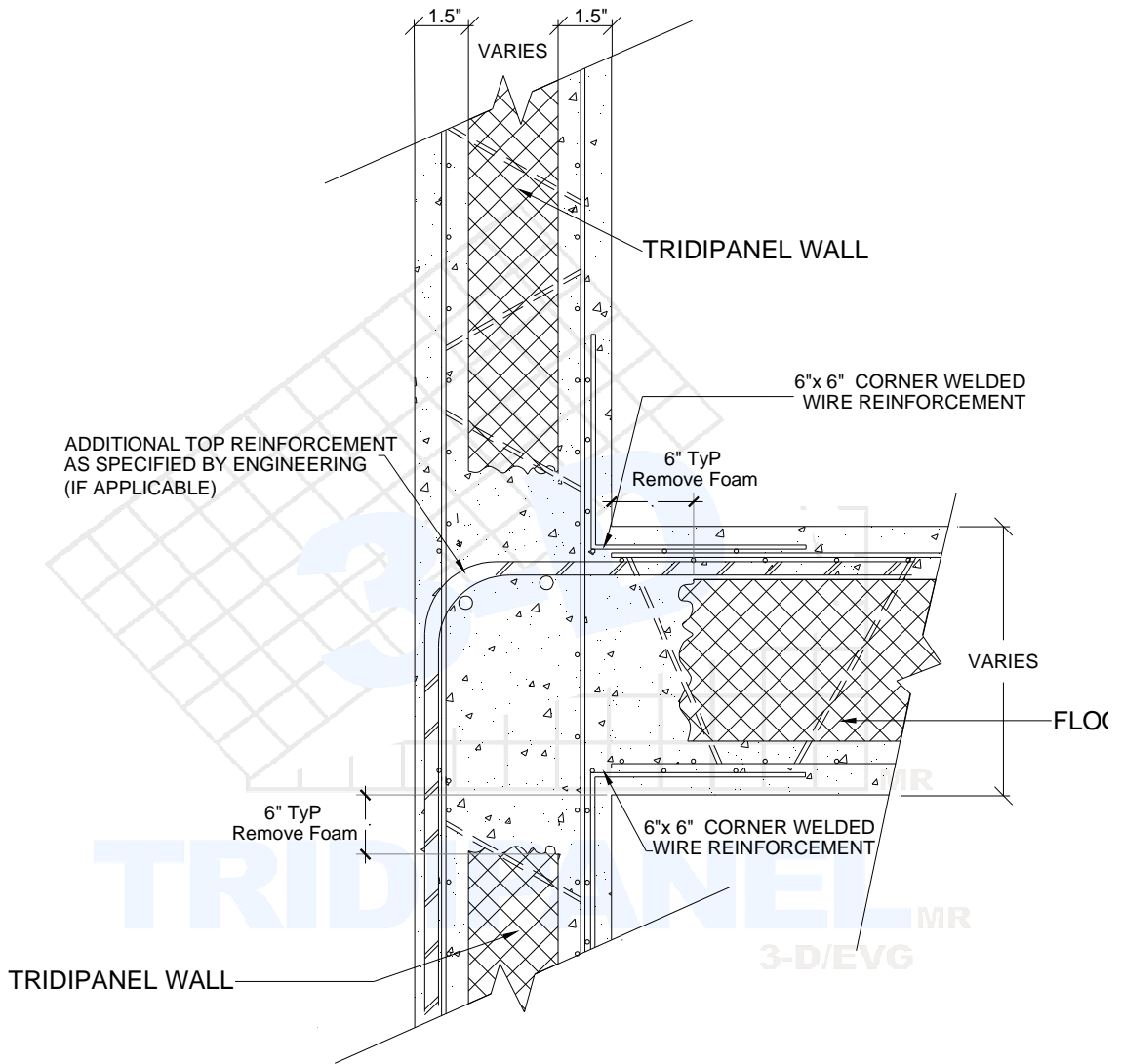
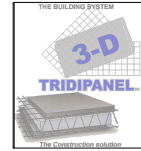
DETAIL
<b>62</b>
February 2013
Revision # 1



**TYPICAL FLOOR / WALL  
INTERSECTION REINFORCEMENT  
AS SPECIFIED BY ENGINEERING**

Scale: None

DETAIL
<b>63</b>
February 2013
Revision # 1

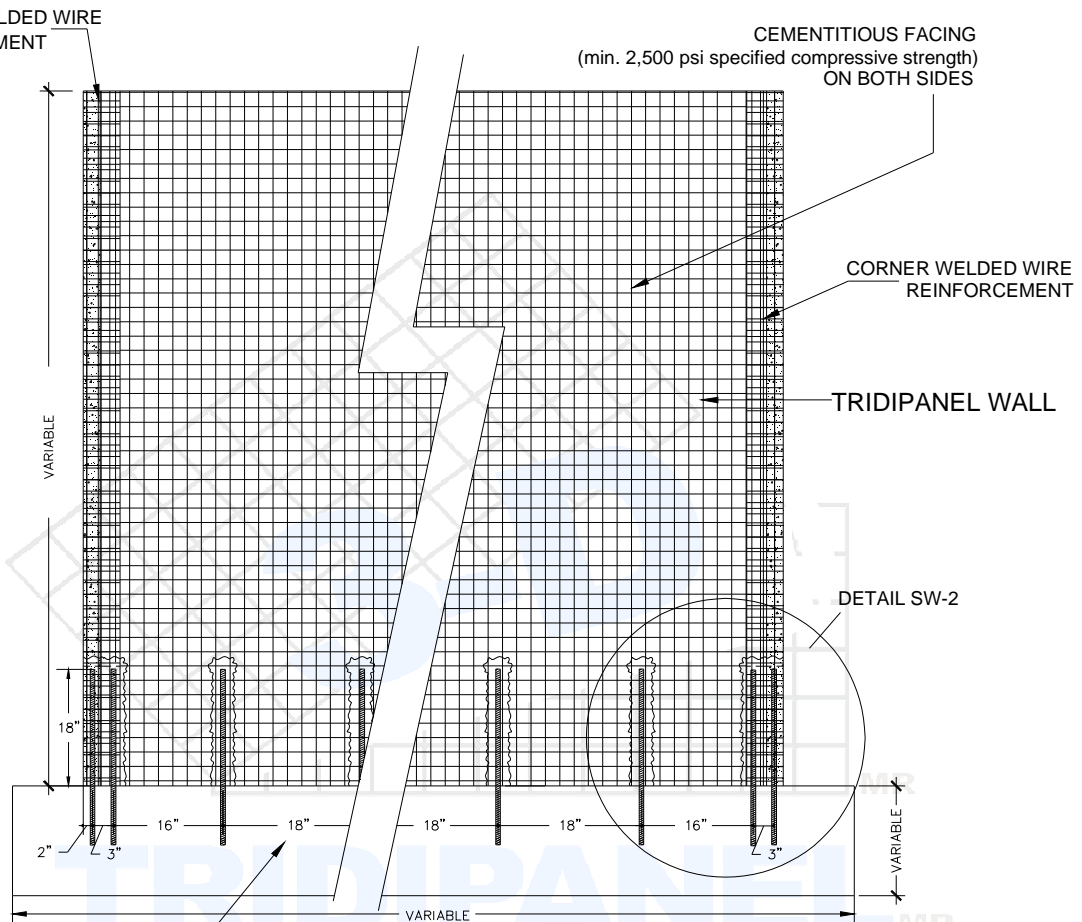
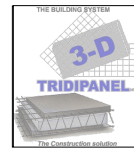


### TYPICAL FLOOR / WALL INTERSECTION

Scale: None

DETAIL
<b>64</b>
February 2013
Revision # 1





\* TYPICAL ANCHOR SEPARATION, ADDITIONAL REQUIREMENTS MIGHT APPLY ACCORDING TO EACH PARTICULAR PROJECT AND PER STRUCTURAL ENGINEERING SPECIFICATIONS

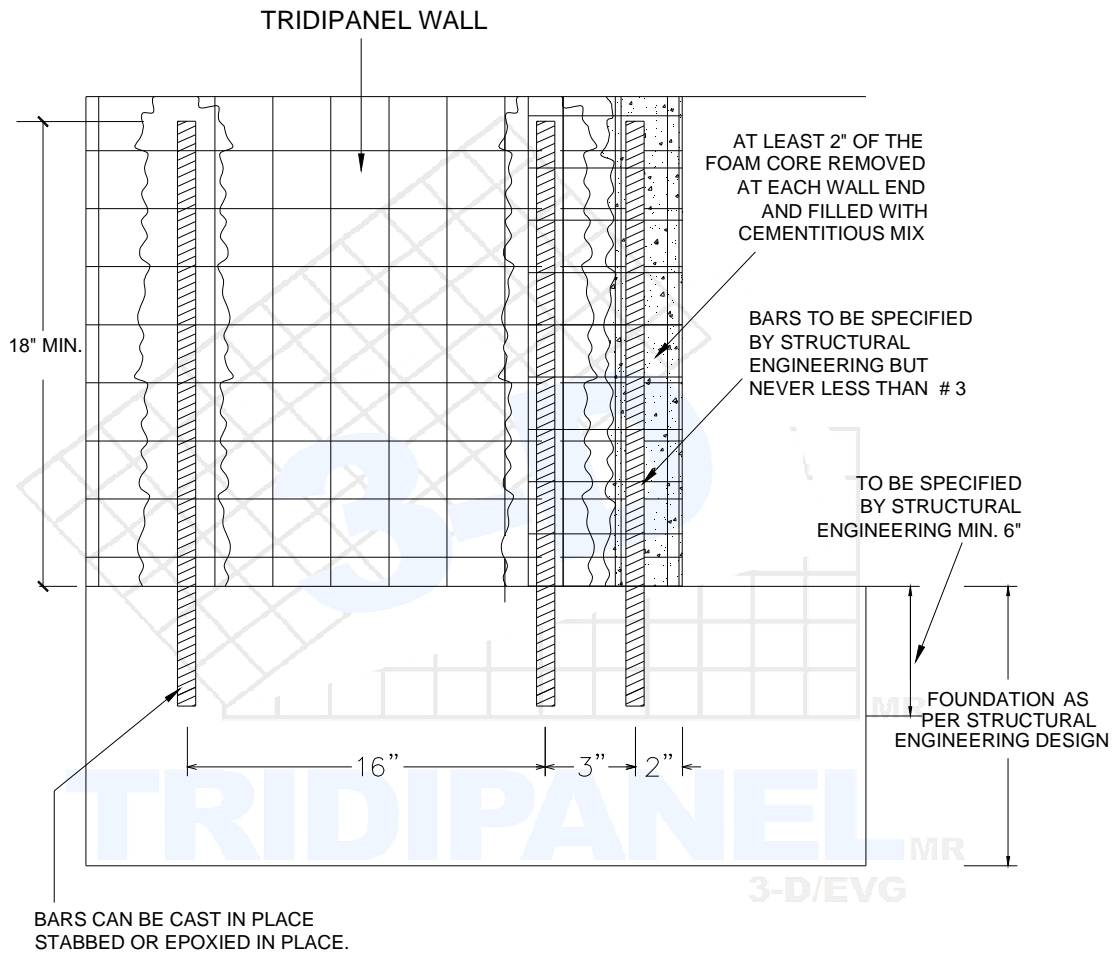
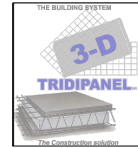
\* ANCHORS TO BE PLACED ON BOTH SIDES OF PANEL, SEE SW-1, SW-2 AND SW-3.

## TYPICAL SHEAR WALL ANCHOR DETAIL

Scale: None

NOTE: IT IS RECOMMENDED THAT SHEAR WALLS MAINTAIN AN ASPECT RATIO OF 1:1 MAX

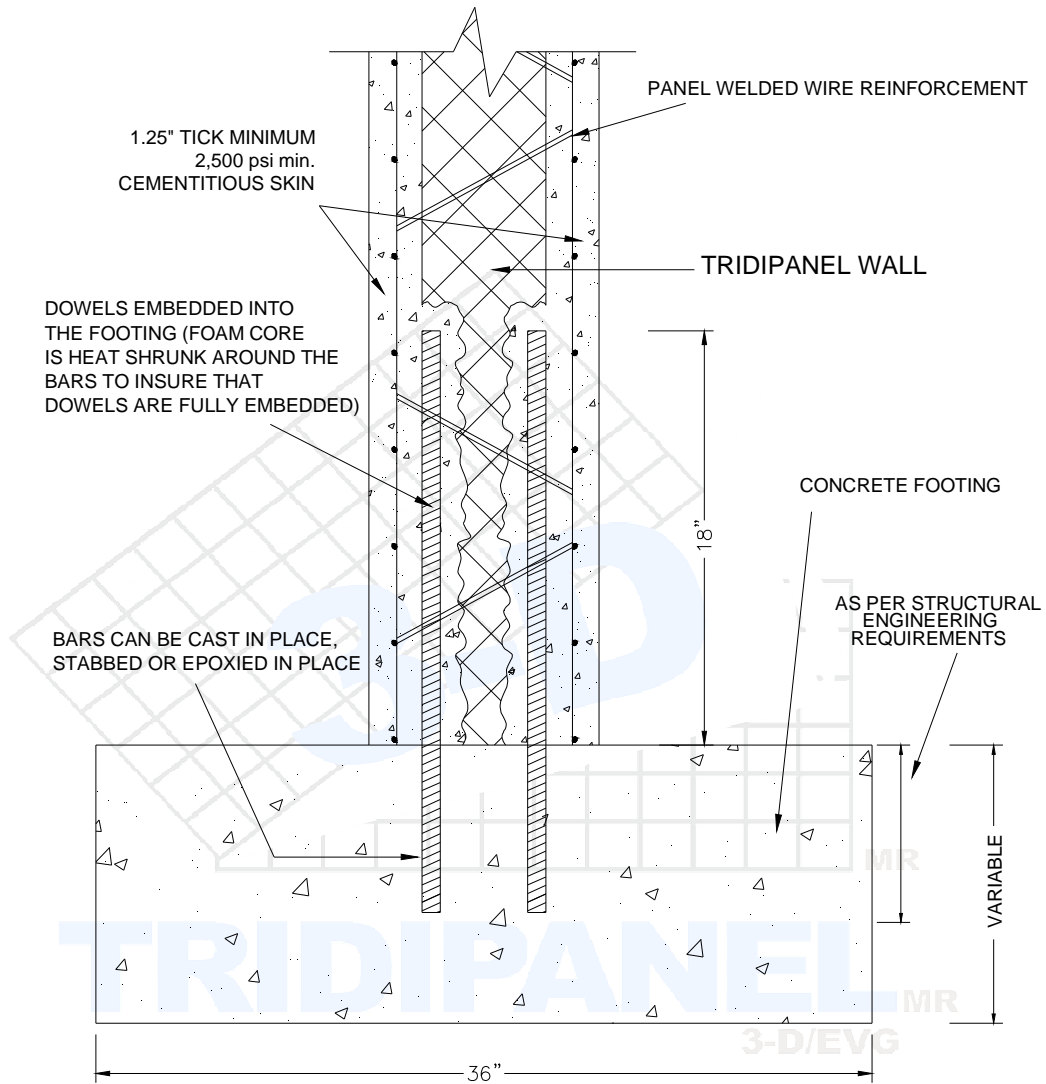
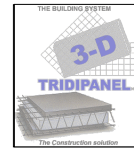
DETAIL
<b>SW-1</b>
February 2013
Revision # 1



## TYPICAL SHEAR WALL END ANCHOR DETAIL

Scale: None  
 NOTE: IT IS RECOMMENDED THAT SHEAR WALLS MAINTAIN AN ASPECT RATIO OF 1:1 MAX

DETAIL
<b>SW-2</b>
February 2013
Revision # 1

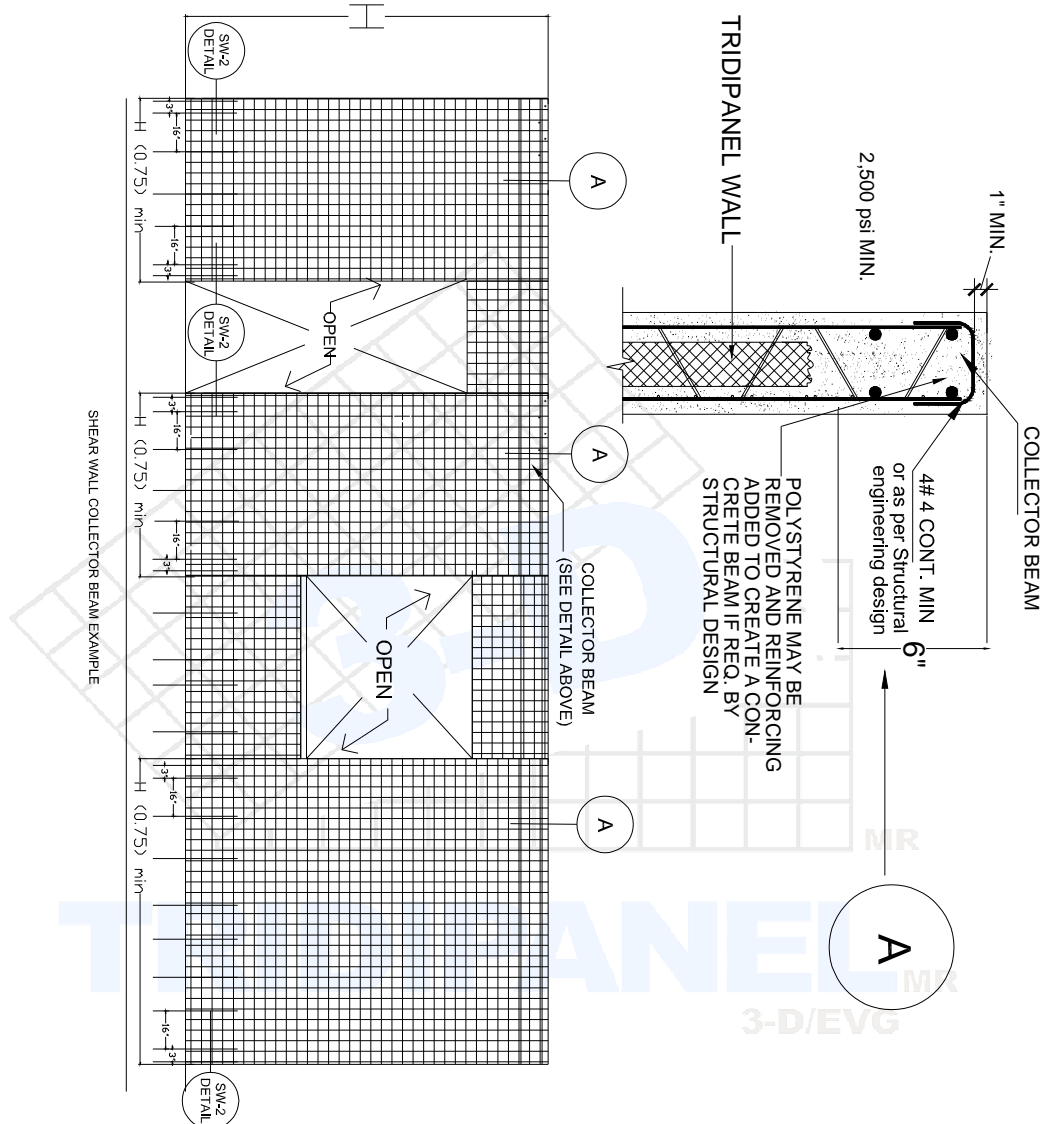
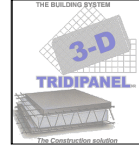


## TYPICAL WALL ANCHOR DETAILS WITH SHEAR WALLS

Scale: None

NOTE: IT IS RECOMMENDED THAT SHEAR WALLS MAINTAIN AN ASPECT RATIO OF 1:1 MAX

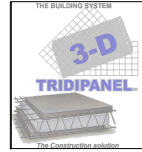
DETAIL
<b>SW-3</b>
February 2013
Revision # 1



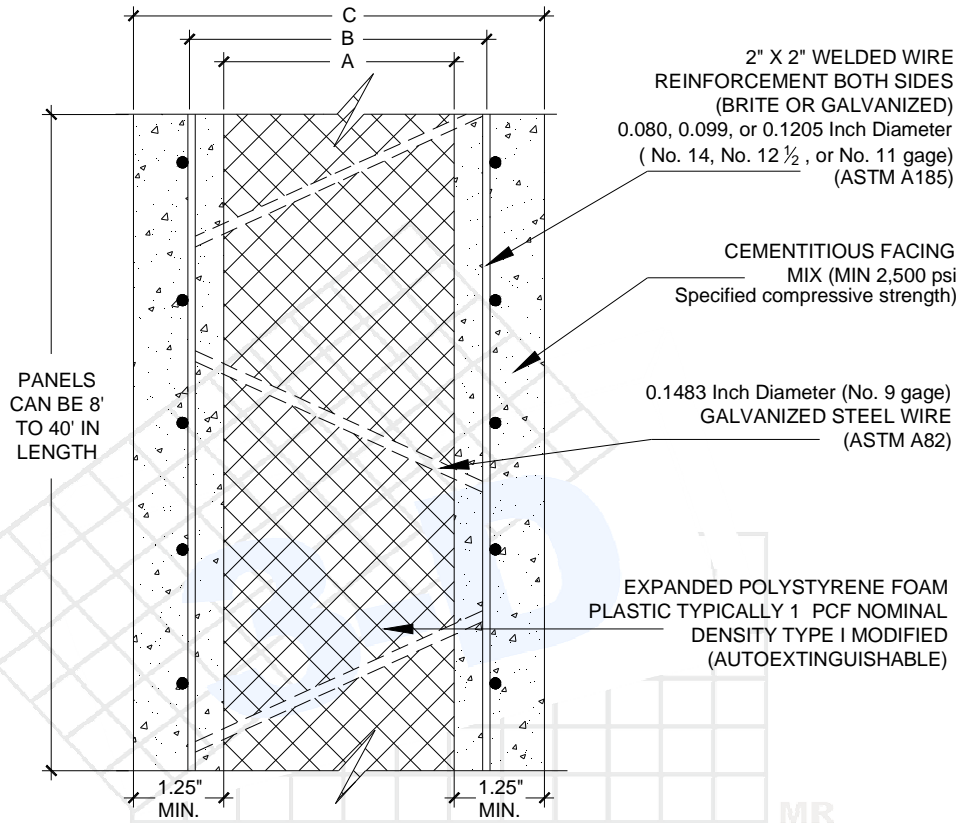
### TYPICAL COLLECTOR BEAM DETAIL

Scale: None  
 NOTE: IT IS RECOMMENDED THAT SHEAR WALLS  
 MAINTAIN AN ASPECT RATIO OF 1:1 MAX

DETAIL
<b>SW-4</b>
February 2013
Revision # 1



## TRIDIPANEL 3D/EVG™ VARIATIONS AND FINISHED SECTIONS



2" X 2" WELDED WIRE REINFORCEMENT BOTH SIDES (BRITE OR GALVANIZED)  
0.080, 0.099, or 0.1205 Inch Diameter (No. 14, No. 12 1/2, or No. 11 gage) (ASTM A185)

CEMENTITIOUS FACING MIX (MIN 2,500 psi Specified compressive strength)

0.1483 Inch Diameter (No. 9 gage) GALVANIZED STEEL WIRE (ASTM A82)

EXPANDED POLYSTYRENE FOAM PLASTIC TYPICALLY 1 PCF NOMINAL DENSITY TYPE I MODIFIED (AUTOEXTINGUISHABLE)

(PANEL WIDTH IS ALWAYS 4')

### WELDEL WIRE REINFORCEMENT TYPES (BRITE OR GALVANIZED)

GAUGE	Ø IN	Ø MM	W
14	0.080	2.032	0.5
12.5	0.099	2.512	-
11	0.1205	3.061	1.2

(BOTH SIDES OF PANEL)

A	B	C	PRODUCTION
1.5"	2.5"	4.0"	STD
2.0"	3.0"	4.5"	STD
2.5"	3.5"	5.0"	STD
3.0"	4.0"	5.5"	SPECIAL
3.5"	4.5"	6.0"	SPECIAL
4.0"	5.0"	6.5"	STD
4.5"	5.5"	7.0"	SPECIAL
5.0"	6.0"	7.5"	STD

Scale: None

DETAIL

T-01

February 2013

Revision # 1